

Datasheet for ABIN2787803
anti-MAGT1 antibody (N-Term)[Go to Product page](#)

2 Images

Overview

Quantity:	100 µL
Target:	MAGT1
Binding Specificity:	N-Term
Reactivity:	Human, Mouse, Rat, Cow, Dog, Horse, Guinea Pig, Pig
Host:	Rabbit
Clonality:	Polyclonal
Conjugate:	This MAGT1 antibody is un-conjugated
Application:	Western Blotting (WB)

Product Details

Immunogen:	The immunogen is a synthetic peptide directed towards the N terminal region of human RP11-217H1.1
Sequence:	ARWRFWCVSV TMVALLIVC DVPSASAQRK KEMVLSEKVS QLMEWTNKRK
Predicted Reactivity:	Cow: 100%, Dog: 100%, Guinea Pig: 91%, Horse: 100%, Human: 100%, Mouse: 100%, Pig: 100%, Rat: 100%
Characteristics:	This is a rabbit polyclonal antibody against RP11-217H1.1. It was validated on Western Blot using a cell lysate as a positive control.
Purification:	Affinity Purified

Target Details

Target:	MAGT1
---------	-------

Target Details

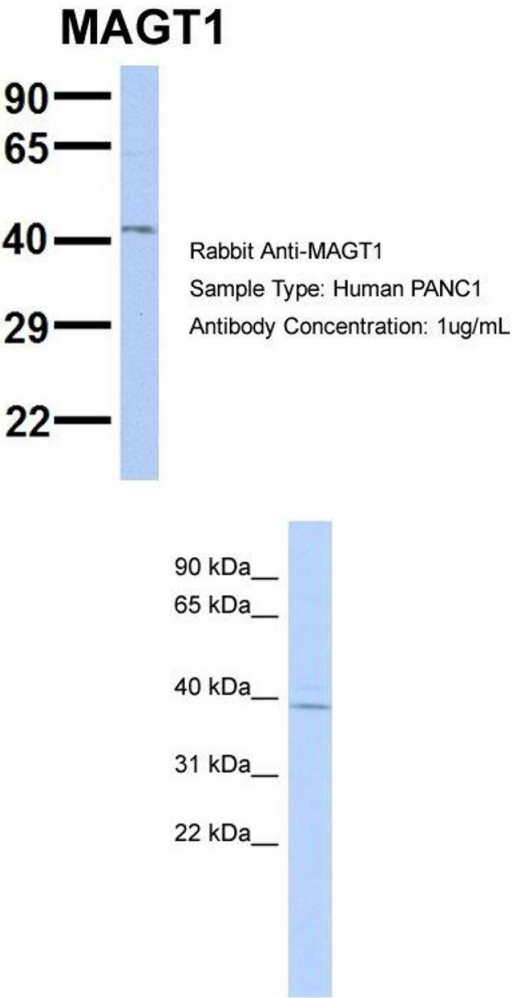
Alternative Name:	RP11-217H1.1 (MAGT1 Products)
Background:	<p>The specific function of this protein remains unknown.</p> <p>Alias Symbols: DKFZp564K142, FLJ14726, MAGT1, MGC64926, PRO0756, bA217H1.1, IAP, XMEN, MRX95, OST3B, RP11-217H1.1</p> <p>Protein Interaction Partner: UBC, EED, RNF2, FBXO6, env, STT3B, RPL6, PPIB, LMNB1, DDOST,</p> <p>Protein Size: 367</p>
Molecular Weight:	41 kDa
Gene ID:	84061
NCBI Accession:	NM_032121 , NP_115497
UniProt:	B4DH58
Pathways:	Cell RedoxHomeostasis

Application Details

Application Notes:	Optimal working dilutions should be determined experimentally by the investigator.
Comment:	Antigen size: 367 AA
Restrictions:	For Research Use only

Handling

Format:	Liquid
Concentration:	Lot specific
Buffer:	Liquid. Purified antibody supplied in 1x PBS buffer with 0.09 % (w/v) sodium azide and 2 % sucrose.
Preservative:	Sodium azide
Precaution of Use:	This product contains Sodium azide: a POISONOUS AND HAZARDOUS SUBSTANCE which should be handled by trained staff only.
Handling Advice:	Avoid repeated freeze-thaw cycles.
Storage:	-20 °C
Storage Comment:	For short term use, store at 2-8°C up to 1 week. For long term storage, store at -20°C in small aliquots to prevent freeze-thaw cycles.



Western Blotting

Image 1. Host: Rabbit Target Name: MAGT1 Sample Type: PANC1 Antibody Dilution: 1.0ug/ml MAGT1 is supported by BioGPS gene expression data to be expressed in PANC1

Western Blotting

Image 2. WB Suggested Anti-RP11-217H1.1 Antibody Titration: 0.2-1 ug/ml ELISA Titer: 1:1562500 Positive Control: Human brain