



[Go to Product page](#)

Datasheet for ABIN2787812

anti-TLX1 Neighbor antibody (Middle Region)

1 Image

Overview

Quantity:	100 µL
Target:	TLX1 Neighbor (TLX1NB)
Binding Specificity:	Middle Region
Reactivity:	Human
Host:	Rabbit
Clonality:	Polyclonal
Conjugate:	This TLX1 Neighbor antibody is un-conjugated
Application:	Western Blotting (WB)

Product Details

Immunogen:	The immunogen is a synthetic peptide directed towards the middle region of human TD1
Sequence:	PPHPLNKQKH HPPHPSQTQK DLVPRSPQLE KSRIRLRRTL RNLGGGRGQR
Predicted Reactivity:	Human: 100%
Characteristics:	This is a rabbit polyclonal antibody against TD1. It was validated on Western Blot using a cell lysate as a positive control.
Purification:	Affinity Purified

Target Details

Target:	TLX1 Neighbor (TLX1NB)
Alternative Name:	TD1 (TLX1NB Products)

Target Details

Background: The specific function of this protein remains unknown.
Alias Symbols: TD1, TDI, APT-B7
Protein Size: 122

Molecular Weight: 13 kDa

Gene ID: 100038246

NCBI Accession: [NM_001085398](#), [NP_001078867](#)

UniProt: [P0CAT3](#)

Application Details

Application Notes: Optimal working dilutions should be determined experimentally by the investigator.

Comment: Antigen size: 122 AA

Restrictions: For Research Use only

Handling

Format: Liquid

Concentration: Lot specific

Buffer: Liquid. Purified antibody supplied in 1x PBS buffer with 0.09 % (w/v) sodium azide and 2 % sucrose.

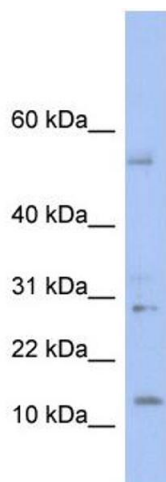
Preservative: Sodium azide

Precaution of Use: This product contains Sodium azide: a POISONOUS AND HAZARDOUS SUBSTANCE which should be handled by trained staff only.

Handling Advice: Avoid repeated freeze-thaw cycles.

Storage: -20 °C

Storage Comment: For short term use, store at 2-8°C up to 1 week. For long term storage, store at -20°C in small aliquots to prevent freeze-thaw cycles.



Western Blotting

Image 1. WB Suggested Anti-TD1 Antibody Titration: 0.2-1 ug/ml ELISA Titer: 1:312500 Positive Control: Human Thymus