



[Go to Product page](#)

Datasheet for ABIN2787817  
**anti-SHB antibody (N-Term)**

2 Images

Overview

Quantity:	100 µL
Target:	SHB
Binding Specificity:	N-Term
Reactivity:	Human, Mouse, Rat, Cow, Rabbit, Dog, Zebrafish (Danio rerio)
Host:	Rabbit
Clonality:	Polyclonal
Conjugate:	This SHB antibody is un-conjugated
Application:	Western Blotting (WB)

Product Details

Immunogen:	The immunogen is a synthetic peptide directed towards the N terminal region of human SHB
Sequence:	MAKWLNKYFS LGNSKTKSPP QPPRPDYREQ RRRGERPSQP PQAVPQASSA
Predicted Reactivity:	Cow: 100%, Dog: 100%, Human: 100%, Mouse: 100%, Rabbit: 100%, Rat: 100%, Zebrafish: 82%
Characteristics:	This is a rabbit polyclonal antibody against SHB. It was validated on Western Blot using a cell lysate as a positive control.
Purification:	Affinity Purified

Target Details

Target:	SHB
Alternative Name:	SHB ( <a href="#">SHB Products</a> )

## Target Details

---

Background:	<p>SHB is the adapter protein which regulates several signal transduction cascades by linking activated receptors to downstream signaling components. SHB may play a role in angiogenesis by regulating FGFR1, VEGFR2 and PDGFR signaling. SHB may also play a role in</p> <p>Alias Symbols: RP11-3J10.8, bA3J10.2</p> <p>Protein Interaction Partner: SLC39A1, GRAP2, LAT, LCP2, EPS8, JAK3, IL2RG, KDR, SRC, ZAP70, PDGFRA, PLCG1, PIK3R1, VAV1, CRK, JAK1, IL2RB, GRB2, FGFR1, PDGFRB,</p> <p>Protein Size: 509</p>
Molecular Weight:	55 kDa
Gene ID:	6461
NCBI Accession:	<a href="#">NM_003028</a> , <a href="#">NP_003019</a>
UniProt:	<a href="#">Q15464</a>

## Application Details

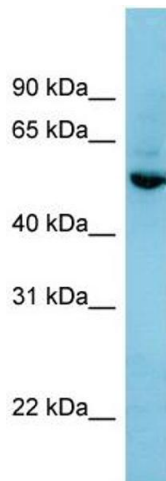
---

Application Notes:	Optimal working dilutions should be determined experimentally by the investigator.
Comment:	Antigen size: 509 AA
Restrictions:	For Research Use only

## Handling

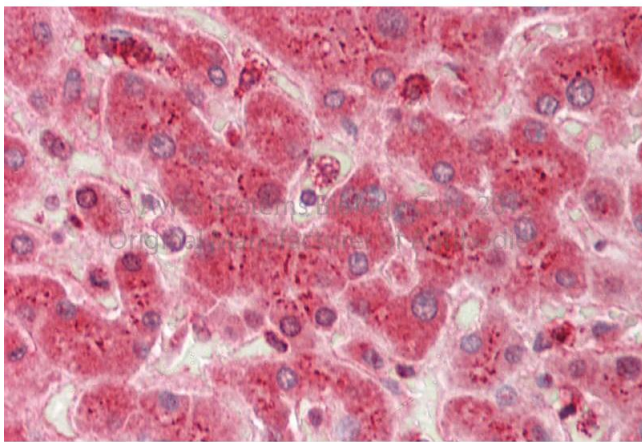
---

Format:	Liquid
Concentration:	Lot specific
Buffer:	Liquid. Purified antibody supplied in 1x PBS buffer with 0.09 % (w/v) sodium azide and 2 % sucrose.
Preservative:	Sodium azide
Precaution of Use:	This product contains Sodium azide: a POISONOUS AND HAZARDOUS SUBSTANCE which should be handled by trained staff only.
Handling Advice:	Avoid repeated freeze-thaw cycles.
Storage:	-20 °C
Storage Comment:	For short term use, store at 2-8°C up to 1 week. For long term storage, store at -20°C in small aliquots to prevent freeze-thaw cycles.



### Western Blotting

**Image 1.** WB Suggested Anti-SHB Antibody Titration: 0.2-1 ug/ml ELISA Titer: 1:312500 Positive Control: HepG2 cell lysate SHB is supported by BioGPS gene expression data to be expressed in HepG2



### Immunohistochemistry

**Image 2.** Rabbit Anti-SHB antibody Catalog Number: ARP58762 Formalin Fixed Paraffin Embedded Tissue: Human Adult Liver Observed Staining: Cytoplasm in hepatocytes Primary Antibody Concentration: 1:600 Secondary Antibody: Donkey anti-Rabbit-Cy3 Secondary Antibody Concentration: 1:200 Magnification: 20X Exposure Time: 0.5 – 2.0 sec