



[Go to Product page](#)

Datasheet for ABIN2787820

anti-Keratin 75 antibody (N-Term)

1 Image

Overview

Quantity:	100 µL
Target:	Keratin 75 (KRT75)
Binding Specificity:	N-Term
Reactivity:	Human, Mouse, Rabbit, Pig, Rat, Cow
Host:	Rabbit
Clonality:	Polyclonal
Conjugate:	This Keratin 75 antibody is un-conjugated
Application:	Western Blotting (WB)

Product Details

Immunogen:	The immunogen is a synthetic peptide directed towards the N terminal region of human KRT75
Sequence:	MSRQSSITFQ SGSRRGFSTT SAITPAAGRS RFSSVSVARS AAGSGGLGRI
Predicted Reactivity:	Cow: 79%, Human: 100%, Mouse: 86%, Pig: 85%, Rabbit: 79%, Rat: 93%
Characteristics:	This is a rabbit polyclonal antibody against KRT75. It was validated on Western Blot using a cell lysate as a positive control.
Purification:	Affinity Purified

Target Details

Target:	Keratin 75 (KRT75)
Alternative Name:	KRT75 (KRT75 Products)

Target Details

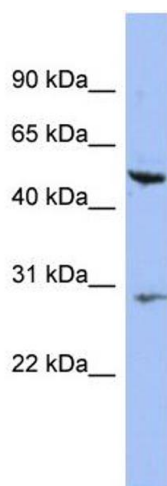
Background:	<p>This gene is a member of the type II keratin family clustered on the long arm of chromosome 12. Type I and type II keratins heteropolymerize to form intermediate-sized filaments in the cytoplasm of epithelial cells. This gene is expressed in the companion</p> <p>Alias Symbols: K6HF, PFB, KB18</p> <p>Protein Interaction Partner: LGR4, WWOX, UBC, EIF4A3, EPS15, CAND1, DCUN1D1, COPS5, COPS6, CUL1, CUL2, CUL3, CUL4A, CUL4B, CUL5, NEDD8,</p> <p>Protein Size: 551</p>
Molecular Weight:	59 kDa
Gene ID:	9119
NCBI Accession:	NM_004693 , NP_004684
UniProt:	O95678

Application Details

Application Notes:	Optimal working dilutions should be determined experimentally by the investigator.
Comment:	Antigen size: 551 AA
Restrictions:	For Research Use only

Handling

Format:	Liquid
Concentration:	Lot specific
Buffer:	Liquid. Purified antibody supplied in 1x PBS buffer with 0.09 % (w/v) sodium azide and 2 % sucrose.
Preservative:	Sodium azide
Precaution of Use:	This product contains Sodium azide: a POISONOUS AND HAZARDOUS SUBSTANCE which should be handled by trained staff only.
Handling Advice:	Avoid repeated freeze-thaw cycles.
Storage:	-20 °C
Storage Comment:	For short term use, store at 2-8°C up to 1 week. For long term storage, store at -20°C in small aliquots to prevent freeze-thaw cycles.



Western Blotting

Image 1. WB Suggested Anti-KRT75 Antibody Titration: 0.2-1 ug/ml ELISA Titer: 1:312500 Positive Control: HT1080 cell lysate