



[Go to Product page](#)

Datasheet for ABIN2787831  
**anti-GNL3L antibody (N-Term)**

3 Images

### Overview

Quantity:	100 µL
Target:	GNL3L
Binding Specificity:	N-Term
Reactivity:	Human, Mouse, Rat, Cow, Pig, Dog, Rabbit, Guinea Pig, Horse
Host:	Rabbit
Clonality:	Polyclonal
Conjugate:	This GNL3L antibody is un-conjugated
Application:	Western Blotting (WB), Immunofluorescence (IF)

### Product Details

Immunogen:	The immunogen is a synthetic peptide directed towards the N terminal region of human GNL3L
Sequence:	QQAAREQERQ KRRTIESYCQ DVLRRQEEFE HKEEVLQELN MFPQLDDEAT
Predicted Reactivity:	Cow: 100%, Dog: 86%, Guinea Pig: 86%, Horse: 93%, Human: 100%, Mouse: 79%, Pig: 93%, Rabbit: 86%, Rat: 86%
Characteristics:	This is a rabbit polyclonal antibody against GNL3L. It was validated on Western Blot using a cell lysate as a positive control.
Purification:	Affinity Purified

### Target Details

Target:	GNL3L
---------	-------

## Target Details

---

Alternative Name:	GNL3L ( <a href="#">GNL3L Products</a> )
Background:	GNL3L is required for normal processing of ribosomal pre-rRNA and cell proliferation. Alias Symbols: FLJ10613, RP11-353K22.1 Protein Interaction Partner: LZTS2, ROPN1, ALAS1, ADRB2, UBC, UBD, SLC2A4, ELAVL1, TERT, TERF1, TP53, MDM2, LDOC1, Protein Size: 582
Molecular Weight:	65 kDa
Gene ID:	54552
NCBI Accession:	<a href="#">NM_019067</a> , <a href="#">NP_061940</a>
UniProt:	<a href="#">Q9NVN8</a>

## Application Details

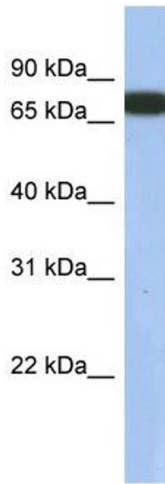
---

Application Notes:	Optimal working dilutions should be determined experimentally by the investigator.
Comment:	Antigen size: 582 AA
Restrictions:	For Research Use only

## Handling

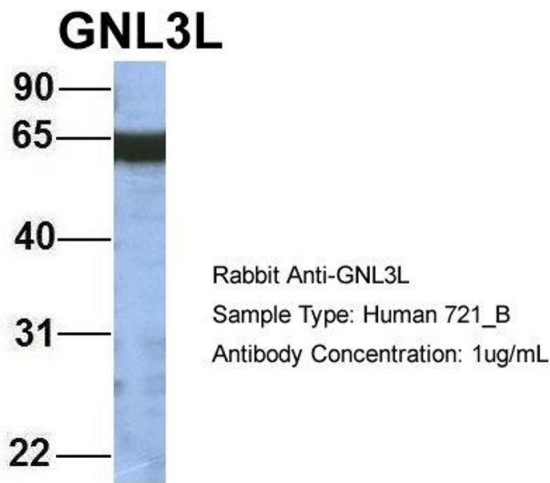
---

Format:	Liquid
Concentration:	Lot specific
Buffer:	Liquid. Purified antibody supplied in 1x PBS buffer with 0.09 % (w/v) sodium azide and 2 % sucrose.
Preservative:	Sodium azide
Precaution of Use:	This product contains Sodium azide: a POISONOUS AND HAZARDOUS SUBSTANCE which should be handled by trained staff only.
Handling Advice:	Avoid repeated freeze-thaw cycles.
Storage:	-20 °C
Storage Comment:	For short term use, store at 2-8°C up to 1 week. For long term storage, store at -20°C in small aliquots to prevent freeze-thaw cycles.



### Western Blotting

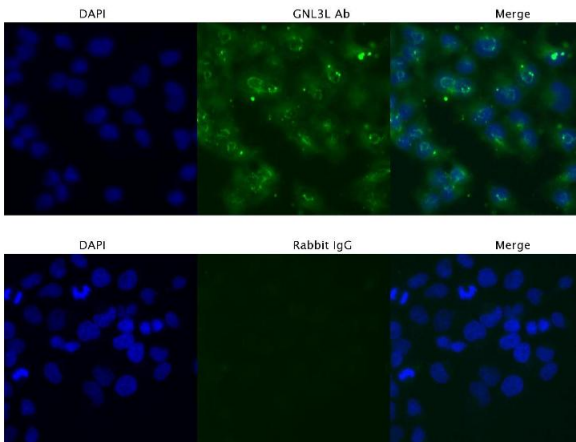
**Image 1.** WB Suggested Anti-GNL3L Antibody Titration: 0.2-1 ug/ml ELISA Titer: 1:62500 Positive Control: Human Lung



### Western Blotting

**Image 2.** Host: Rabbit Target Name: GNL3L Sample Type: 721\_B Antibody Dilution: 1.0ug/ml GNL3L is strongly supported by BioGPS gene expression data to be expressed in Human 721\_B cells

GNL3L in HeLa Cells



### Immunofluorescence

**Image 3.** Sample Type : HeLa Primary Antibody Dilution: 4 ug/ml Secondary Antibody : Anti-rabbit Alexa 546 Secondary Antibody Dilution: 2 ug/ml Gene Name : GNL3L