

Datasheet for ABIN2787842

**anti-WNT3A antibody (C-Term)**[Go to Product page](#)**2** Images

## Overview

Quantity:	100 µL
Target:	WNT3A
Binding Specificity:	C-Term
Reactivity:	Human, Mouse, Rat, Cow, Pig, Rabbit, Guinea Pig, Zebrafish (Danio rerio), Dog, Horse
Host:	Rabbit
Clonality:	Polyclonal
Conjugate:	This WNT3A antibody is un-conjugated
Application:	Western Blotting (WB), Immunohistochemistry (IHC)

## Product Details

Immunogen:	The immunogen is a synthetic peptide corresponding to a region of Mouse
Sequence:	IGDFLKDKYD SASEMVVEKH RESRGWVETL RPRYTYFKVP TERDLVYYEA
Predicted Reactivity:	Cow: 100%, Dog: 93%, Guinea Pig: 93%, Horse: 93%, Human: 100%, Mouse: 100%, Pig: 100%, Rabbit: 86%, Rat: 100%, Zebrafish: 75%
Characteristics:	This is a rabbit polyclonal antibody against Wnt3a. It was validated on Western Blot.
Purification:	Affinity Purified

## Target Details

Target:	WNT3A
Alternative Name:	Wnt3a ( <a href="#">WNT3A Products</a> )

## Target Details

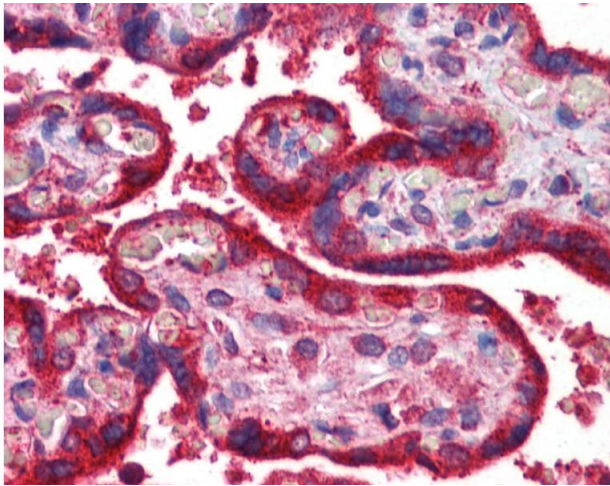
Background:	<p>Wnt3a is a ligand for members of the frizzled family of seven transmembrane receptors. Wnt-3 and Wnt-3a play distinct roles in cell-cell signaling during morphogenesis of the developing neural tube.</p> <p>Alias Symbols: vt, Wnt-3a</p> <p>Protein Interaction Partner: Wnt1, Porcn, Cdh2, Sfrp4, Frzb, Sfrp1, Sfrp2, Ryk, Dkk1,</p> <p>Protein Size: 352</p>
Molecular Weight:	38 kDa
Gene ID:	22416
NCBI Accession:	<a href="#">NM_009522</a> , <a href="#">NP_033548</a>
UniProt:	<a href="#">P27467</a>
Pathways:	<a href="#">WNT Signaling</a> , <a href="#">Regulation of Muscle Cell Differentiation</a> , <a href="#">Regulation of Cell Size</a> , <a href="#">Positive Regulation of Endopeptidase Activity</a>

## Application Details

Application Notes:	Optimal working dilutions should be determined experimentally by the investigator.
Comment:	Antigen size: 352 AA
Restrictions:	For Research Use only

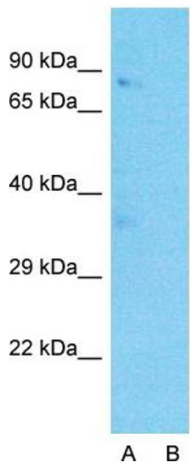
## Handling

Format:	Liquid
Concentration:	Lot specific
Buffer:	Liquid. Purified antibody supplied in 1x PBS buffer with 0.09 % (w/v) sodium azide and 2 % sucrose.
Preservative:	Sodium azide
Precaution of Use:	This product contains Sodium azide: a POISONOUS AND HAZARDOUS SUBSTANCE which should be handled by trained staff only.
Handling Advice:	Avoid repeated freeze-thaw cycles.
Storage:	-20 °C
Storage Comment:	For short term use, store at 2-8°C up to 1 week. For long term storage, store at -20°C in small aliquots to prevent freeze-thaw cycles.



Immunohistochemistry

Image 1.



**Anti-Wnt3a Western Blot & Peptide Block Validation**

Lot Number: QC27296

Lysate: Mouse Heart

Lane A: Primary Antibody  
Lane B: Primary Antibody + Blocking Peptide

Primary Antibody Concentration: 1.0µg/ml  
Peptide Concentration: 5.0µg/ml  
Lysate Quantity: 25µg/lane  
Gel Concentration: 12%

Western Blotting

**Image 2.** Host: Rabbit

Target Name: Wnt3a

Sample Tissue: Mouse HeartLane A: Primary Antibody Lane B: Primary Antibody + Blocking Peptide

Primary Antibody Concentration: 1 µg/mL Peptide Concentration: 5 µg/mL Lysate Quantity: 41 µg/laneGel Concentration: 12 %