

Datasheet for ABIN2787851
anti-APOL1 antibody (N-Term)[Go to Product page](#)

2 Images

Overview

Quantity:	100 µL
Target:	APOL1
Binding Specificity:	N-Term
Reactivity:	Human
Host:	Rabbit
Clonality:	Polyclonal
Conjugate:	This APOL1 antibody is un-conjugated
Application:	Western Blotting (WB)

Product Details

Sequence:	AIKYFKEKVS TQNLLLLLTD NEAWNGFVAA AELPRNEADE LRKALDNLAR
Predicted Reactivity:	Human: 100%
Characteristics:	This is a rabbit polyclonal antibody against APOL1. It was validated on Western Blot.
Purification:	Affinity Purified

Target Details

Target:	APOL1
Alternative Name:	APOL1 (APOL1 Products)
Background:	This gene encodes a secreted high density lipoprotein which binds to apolipoprotein A-I. Apolipoprotein A-I is a relatively abundant plasma protein and is the major apoprotein of HDL. It

Target Details

is involved in the formation of most cholesteryl esters in plasma and also promotes efflux of cholesterol from cells. This apolipoprotein L family member may play a role in lipid exchange and transport throughout the body, as well as in reverse cholesterol transport from peripheral cells to the liver. Several different transcript variants encoding different isoforms have been found for this gene.

Alias Symbols: APO-L, APOL, APOL-I, FSGS4

Protein Interaction Partner: CDC23, APOA1,

Protein Size: 398

Molecular Weight: 44 kDa

Gene ID: 8542

NCBI Accession: [NM_003661](#), [NP_003652](#)

UniProt: [O14791](#)

Application Details

Application Notes: Optimal working dilutions should be determined experimentally by the investigator.

Comment: Antigen size: 398 AA

Restrictions: For Research Use only

Handling

Format: Liquid

Concentration: Lot specific

Buffer: Liquid. Purified antibody supplied in 1x PBS buffer with 0.09 % (w/v) sodium azide and 2 % sucrose.

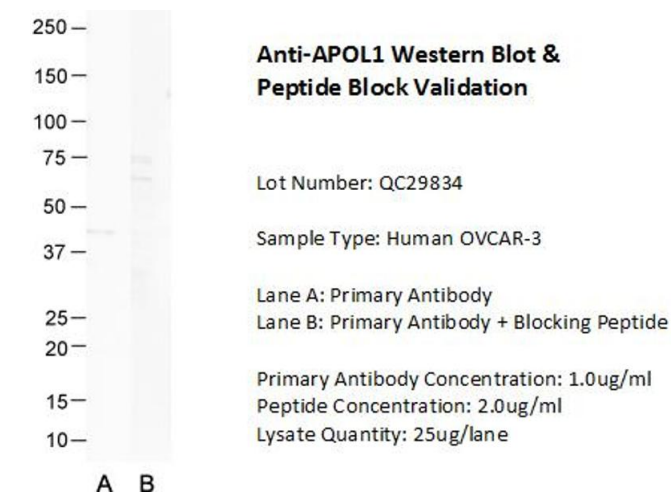
Preservative: Sodium azide

Precaution of Use: This product contains Sodium azide: a POISONOUS AND HAZARDOUS SUBSTANCE which should be handled by trained staff only.

Handling Advice: Avoid repeated freeze-thaw cycles.

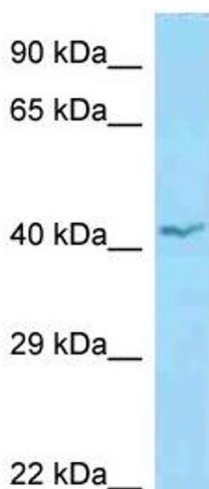
Storage: -20 °C

Storage Comment: For short term use, store at 2-8°C up to 1 week. For long term storage, store at -20°C in small aliquots to prevent freeze-thaw cycles.



Western Blotting

Image 1. Host: Rabbit Target Name: APOL1 Sample Type: Human OVCAR-3 Lane A: Primary Antibody Lane B: Primary Antibody + Blocking Peptide Primary Antibody Concentration: 1.0 ug/ml Peptide Concentration: 2.0 ug/ml Lysate Quantity: 25 ug/lane



Western Blotting

Image 2. WB Suggested Anti-APOL1 Antibody Titration: 1.0 ug/ml Positive Control: OVCAR-3 Whole Cell APOL1 is supported by BioGPS gene expression data to be expressed in OVCAR3