

Datasheet for ABIN2787855
anti-ATG4C antibody (Middle Region)



[Go to Product page](#)

2 Images

Overview

Quantity:	100 µL
Target:	ATG4C
Binding Specificity:	Middle Region
Reactivity:	Human, Cow, Dog, Horse
Host:	Rabbit
Clonality:	Polyclonal
Conjugate:	This ATG4C antibody is un-conjugated
Application:	Western Blotting (WB)

Product Details

Immunogen:	The immunogen is a synthetic peptide directed towards the middle region of human ATG4C
Sequence:	TISLKETIGK YSDDHEMRNE VYHRKIISWF GDSPLALFGL HQLIEYGKKS
Predicted Reactivity:	Cow: 75%, Dog: 91%, Horse: 86%, Human: 100%
Characteristics:	This is a rabbit polyclonal antibody against ATG4C. It was validated on Western Blot.
Purification:	Affinity Purified

Target Details

Target:	ATG4C
Alternative Name:	ATG4C (ATG4C Products)
Background:	Autophagy is the process by which endogenous proteins and damaged organelles are

Target Details

destroyed intracellularly. Autophagy is postulated to be essential for cell homeostasis and cell remodeling during differentiation, metamorphosis, non-apoptotic cell death, and aging. Reduced levels of autophagy have been described in some malignant tumors, and a role for autophagy in controlling the unregulated cell growth linked to cancer has been proposed. This gene encodes a member of the autophagin protein family. The encoded protein is also designated as a member of the C-54 family of cysteine proteases. Alternate transcriptional splice variants, encoding the same protein, have been characterized.

Alias Symbols: APG4-C, APG4C, AUTL1, AUTL3, FLJ14867

Protein Interaction Partner: UBC, SPTLC1, SMC1A, USP11, PSMD2, PSMC5, PSMC4, PSMC2, PSMC1, PRKDC,

Protein Size: 458

Molecular Weight:	52 kDa
Gene ID:	84938
NCBI Accession:	NM_178221 , NP_835739
UniProt:	Q96DT6
Pathways:	Autophagy

Application Details

Application Notes:	Optimal working dilutions should be determined experimentally by the investigator.
Comment:	Antigen size: 458 AA
Restrictions:	For Research Use only

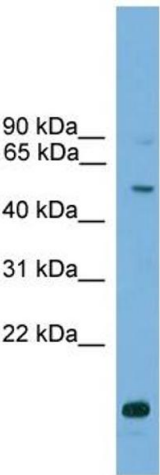
Handling

Format:	Liquid
Concentration:	Lot specific
Buffer:	Liquid. Purified antibody supplied in 1x PBS buffer with 0.09 % (w/v) sodium azide and 2 % sucrose.
Preservative:	Sodium azide
Precaution of Use:	This product contains Sodium azide: a POISONOUS AND HAZARDOUS SUBSTANCE which should be handled by trained staff only.
Handling Advice:	Avoid repeated freeze-thaw cycles.

Handling

Storage:	-20 °C
Storage Comment:	For short term use, store at 2-8°C up to 1 week. For long term storage, store at -20°C in small aliquots to prevent freeze-thaw cycles.

Images



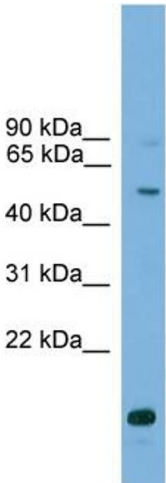
Western Blotting

Image 1. WB Suggested Anti-ATG4C Antibody Titration:

0.2-1 ug/ml

ELISA Titer: 1:62500

Positive Control: 721_B cell lysate



Rabbit Anti-ATG4C Antibody
Catalog Number: ARP58863
Lot Number: QC29839
Lane: 721_B Cell Lysate

Antibody Titration: 1.0µg/ml
Gel Concentration: 12%

Western Blotting

Image 2. WB Suggested Anti-ATG4C

Antibody Titration: 0.2-1 µg/mL ELISA Titer: 1::2500

Positive Control: 21_B cell lysate