

Datasheet for ABIN2787878
anti-PEA15 antibody (C-Term)[Go to Product page](#)

3 Images

Overview

Quantity:	100 µL
Target:	PEA15
Binding Specificity:	C-Term
Reactivity:	Human, Mouse, Rat, Cow, Dog, Guinea Pig, Horse, Rabbit, Zebrafish (Danio rerio)
Host:	Rabbit
Clonality:	Polyclonal
Conjugate:	This PEA15 antibody is un-conjugated
Application:	Western Blotting (WB), Immunohistochemistry (IHC)

Product Details

Immunogen:	The immunogen is a synthetic peptide directed towards the C terminal region of human PEA15
Sequence:	DYRTRVLKIS EEDELDTKLT RIPSARKKYKD IIRQPSEEEI IKLAPPPKKA
Predicted Reactivity:	Cow: 100%, Dog: 100%, Guinea Pig: 100%, Horse: 100%, Human: 100%, Mouse: 100%, Rabbit: 100%, Rat: 100%, Zebrafish: 100%
Characteristics:	This is a rabbit polyclonal antibody against PEA15. It was validated on Western Blot.
Purification:	Affinity Purified

Target Details

Target:	PEA15
Alternative Name:	PEA15 (PEA15 Products)

Target Details

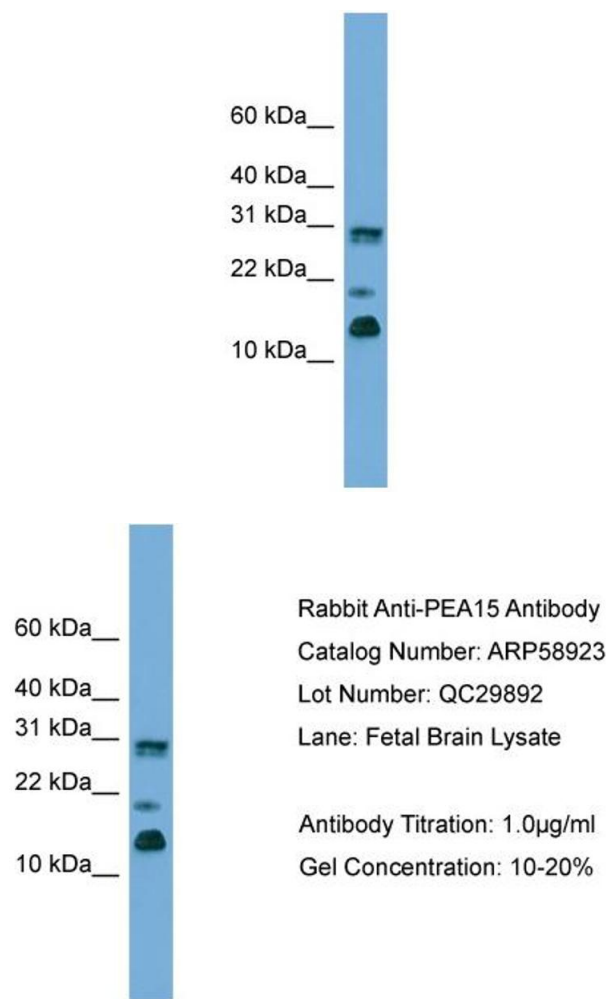
Background:	PEA15 is a death effector domain (DED)-containing protein predominantly expressed in the central nervous system, particularly in astrocytes. Alias Symbols: HMAT1, HUMMAT1H, MAT1, MAT1H, PEA-15, PED Protein Interaction Partner: UBC, LGR4, IQCB1, TERF2IP, MAPK3, MAPK1, PDPK1, LUC7L2, AK9, PANK4, HTRA2, ABCD4, FADD, PLD2, PLD1, CAMK2G, CASP8, L1CAM, RPS6KA3, PRKCA, AKT1, Protein Size: 130
Molecular Weight:	15 kDa
Gene ID:	8682
NCBI Accession:	NM_003768 , NP_003759
UniProt:	Q5U318

Application Details

Application Notes:	Optimal working dilutions should be determined experimentally by the investigator.
Comment:	Antigen size: 130 AA
Restrictions:	For Research Use only

Handling

Format:	Liquid
Concentration:	Lot specific
Buffer:	Liquid. Purified antibody supplied in 1x PBS buffer with 0.09 % (w/v) sodium azide and 2 % sucrose.
Preservative:	Sodium azide
Precaution of Use:	This product contains Sodium azide: a POISONOUS AND HAZARDOUS SUBSTANCE which should be handled by trained staff only.
Handling Advice:	Avoid repeated freeze-thaw cycles.
Storage:	-20 °C
Storage Comment:	For short term use, store at 2-8°C up to 1 week. For long term storage, store at -20°C in small aliquots to prevent freeze-thaw cycles.



Western Blotting

Image 1. WB Suggested Anti-PEA15 Antibody Titration:

0.2-1 ug/ml

ELISA Titer: 1:1562500

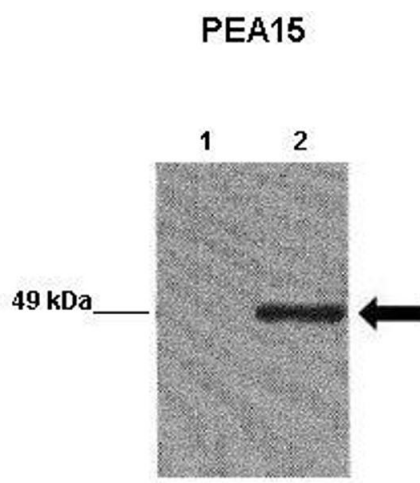
Positive Control: Human brain

Western Blotting

Image 2. WB Suggested Anti-PEA15

Antibody Titration: 0.2-1 µg/mL ELISA Titer: 1:1562500

Positive Control: Human brain



Western Blotting

Image 3. WB Suggested Anti-PEA15 Antibody

Positive Control: Lane 1:241 µg EGFP-transfected MCF7 lysate
Lane 2: 041 µg EGFP-PEA15 transfected MCF7 lysate

Primary Antibody Dilution: 1:0000

Secondary Antibody: Goat anti-rabbit-HRP Secondary

Antibody Dilution: 1:0000

Submitted by: Yann Wallez (Sanford-Burnham Medical Research Institute)