



[Go to Product page](#)

Datasheet for ABIN2787886

anti-Presenilin 1 antibody (Middle Region)

4 Images

Overview

Quantity:	100 µL
Target:	Presenilin 1 (PSEN1)
Binding Specificity:	Middle Region
Reactivity:	Human, Mouse, Rat, Cow, Guinea Pig, Dog, Horse, Rabbit
Host:	Rabbit
Clonality:	Polyclonal
Conjugate:	This Presenilin 1 antibody is un-conjugated
Application:	Western Blotting (WB), Immunohistochemistry (IHC), Immunoprecipitation (IP)

Product Details

Immunogen:	The immunogen is a synthetic peptide directed towards the middle region of human PSEN1
Sequence:	EGDPEAQRRV SKNSKYNAES TERESQDTVA ENDDGGFSEE WEAQRDSHLG
Predicted Reactivity:	Cow: 86%, Dog: 86%, Guinea Pig: 100%, Horse: 86%, Human: 100%, Mouse: 93%, Rabbit: 100%, Rat: 85%
Characteristics:	This is a rabbit polyclonal antibody against PSEN1. It was validated on Western Blot.
Purification:	Affinity Purified

Target Details

Target:	Presenilin 1 (PSEN1)
Alternative Name:	PSEN1 (PSEN1 Products)

Target Details

Background: Alzheimer's disease (AD) patients with an inherited form of the disease carry mutations in the presenilin proteins (PSEN1, PSEN2) or in the amyloid precursor protein (APP). These disease-linked mutations result in increased production of the longer form of amyloid-beta (main component of amyloid deposits found in AD brains). Presenilins are postulated to regulate APP processing through their effects on gamma-secretase, an enzyme that cleaves APP. Also, it is thought that the presenilins are involved in the cleavage of the Notch receptor, such that they either directly regulate gamma-secretase activity or themselves are protease enzymes. Several alternatively spliced transcript variants encoding different isoforms have been identified for this gene, the full-length nature of only some have been determined.

Alias Symbols: AD3, FAD, PS1, S182, PS-1

Protein Interaction Partner: UBC, TRAF6, TGFBR1, ERLIN2, PSMB1, PSMA5, ETFA, TDP2, PSEN2, PSEN1, APH1B, PSENEN, APH1A, NCSTN, ITSN2, PDCD4, KANK2, EPB41L3, CDC37, TUBA1B, AP1M2, UMPS, PRDX2, ST13, SCN1A, RHEB, RAD23A, RAB3A, OXCT1, NOS3, NDUFS8, HMGB1, GCDH, GAPDH, FGF13, ENSA, DTNA,

Protein Size: 467

Molecular Weight: 53 kDa

Gene ID: 5663

NCBI Accession: [NM_000021](#), [NP_000012](#)

UniProt: [P49768](#)

Pathways: [Notch Signaling](#), [EGFR Signaling Pathway](#), [Synaptic Vesicle Exocytosis](#), [Dicarboxylic Acid Transport](#)

Application Details

Application Notes: Optimal working dilutions should be determined experimentally by the investigator.

Comment: Antigen size: 467 AA

Restrictions: For Research Use only

Handling

Format: Liquid

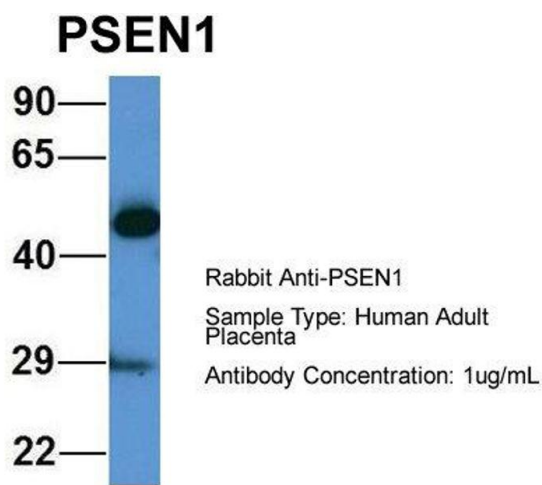
Concentration: Lot specific

Buffer: Liquid. Purified antibody supplied in 1x PBS buffer with 0.09 % (w/v) sodium azide and 2 % sucrose.

Handling

Preservative:	Sodium azide
Precaution of Use:	This product contains Sodium azide: a POISONOUS AND HAZARDOUS SUBSTANCE which should be handled by trained staff only.
Handling Advice:	Avoid repeated freeze-thaw cycles.
Storage:	-20 °C
Storage Comment:	For short term use, store at 2-8°C up to 1 week. For long term storage, store at -20°C in small aliquots to prevent freeze-thaw cycles.

Images



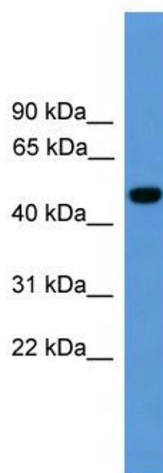
Western Blotting

Image 1. Host: Rabbit

Target Name: PSEN1

Sample Tissue: Human Adult Placenta

Antibody Dilution: 1.0 µg/mL



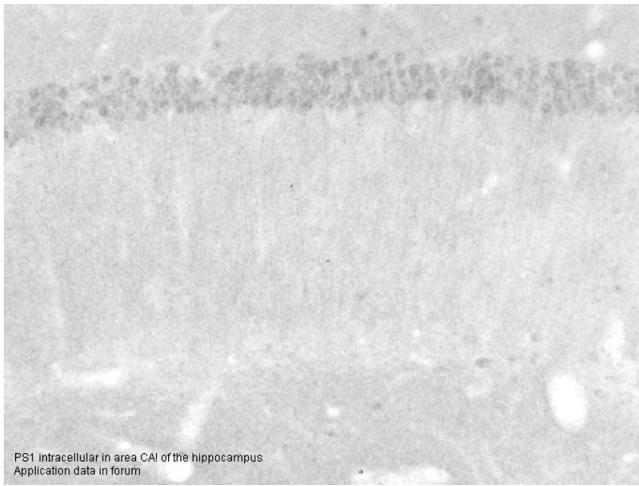
Western Blotting

Image 2. WB Suggested Anti-PSEN1 Antibody Titration:

0.2-1 ug/ml

ELISA Titer: 1:312500

Positive Control: Human brain



Immunohistochemistry

Image 3. Immunohistochemistry with Small intestine tissue at an antibody concentration of 5µg/ml using anti-PSEN1 antibody (ARP58941_P050)

Please check the [product details page](#) for more images. Overall 4 images are available for ABIN2787886.