

Datasheet for ABIN2787894
anti-TMEM166 antibody (Middle Region)[Go to Product page](#)

2 Images

Overview

Quantity:	100 µL
Target:	TMEM166 (FAM176A)
Binding Specificity:	Middle Region
Reactivity:	Human, Dog, Horse, Rabbit, Pig
Host:	Rabbit
Clonality:	Polyclonal
Conjugate:	This TMEM166 antibody is un-conjugated
Application:	Western Blotting (WB)

Product Details

Immunogen:	The immunogen is a synthetic peptide directed towards the middle region of human TMEM166
Sequence:	AALVIRISCH TDCRRRPGKK FLQDRESSSD SSDSEDGSED TVSDLSVRRH
Predicted Reactivity:	Dog: 86%, Horse: 79%, Human: 100%, Pig: 79%, Rabbit: 79%
Characteristics:	This is a rabbit polyclonal antibody against TMEM166. It was validated on Western Blot.
Purification:	Affinity Purified

Target Details

Target:	TMEM166 (FAM176A)
Alternative Name:	TMEM166 (FAM176A Products)
Background:	TMEM166 belongs to the FAM176 family. It acts as a regulator of programmed cell death,

Target Details

mediating both autophagy and apoptosis.

Alias Symbols: FLJ13391, TMEM166

Protein Interaction Partner: UBC, SAT1, PTN,

Protein Size: 152

Molecular Weight: 17 kDa

Gene ID: 84141

NCBI Accession: [NM_001135032](#), [NP_001128504](#)

UniProt: [Q9H8M9](#)

Application Details

Application Notes: Optimal working dilutions should be determined experimentally by the investigator.

Comment: Antigen size: 152 AA

Restrictions: For Research Use only

Handling

Format: Liquid

Concentration: Lot specific

Buffer: Liquid. Purified antibody supplied in 1x PBS buffer with 0.09 % (w/v) sodium azide and 2 % sucrose.

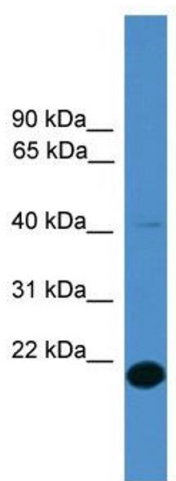
Preservative: Sodium azide

Precaution of Use: This product contains Sodium azide: a POISONOUS AND HAZARDOUS SUBSTANCE which should be handled by trained staff only.

Handling Advice: Avoid repeated freeze-thaw cycles.

Storage: -20 °C

Storage Comment: For short term use, store at 2-8°C up to 1 week. For long term storage, store at -20°C in small aliquots to prevent freeze-thaw cycles.



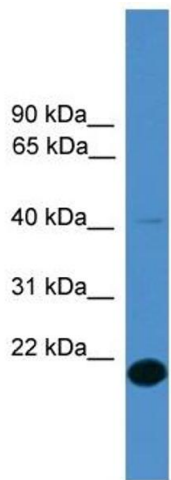
Western Blotting

Image 1. WB Suggested Anti-TMEM166 Antibody

Titration: 0.2-1 ug/ml

ELISA Titer: 1:312500

Positive Control: 293T cell lysate



Rabbit Anti-TMEM166 Antibody
Catalog Number: ARP58963
Lot Number: QC30212
Lane: 293T Cell Lysate

Antibody Titration: 1.0µg/ml
Gel Concentration: 12%

Western Blotting

Image 2. WB Suggested Anti-TMEM166

Antibody Titration: 0.2-1 µg/mL ELISA Titer: 1::12500

Positive Control: 93T cell lysate