

Datasheet for ABIN2787910
anti-AXL antibody (C-Term)



[Go to Product page](#)

2 Images

Overview

Quantity:	100 µL
Target:	AXL
Binding Specificity:	C-Term
Reactivity:	Human, Mouse, Rat, Dog, Pig, Cow, Guinea Pig, Horse
Host:	Rabbit
Clonality:	Polyclonal
Conjugate:	This AXL antibody is un-conjugated
Application:	Western Blotting (WB)

Product Details

Immunogen:	The immunogen is a synthetic peptide directed towards the C terminal region of human AXL
Sequence:	QPDPKDSCSC LTAAEVHPAG RYVLC PSTTP SPAQPADRG S PAAPGQEDGA
Predicted Reactivity:	Cow: 79%, Dog: 79%, Guinea Pig: 85%, Horse: 93%, Human: 100%, Mouse: 85%, Pig: 86%, Rat: 85%
Characteristics:	This is a rabbit polyclonal antibody against AXL. It was validated on Western Blot.
Purification:	Affinity Purified

Target Details

Target:	AXL
Alternative Name:	AXL (AXL Products)

Target Details

Background:	<p>The protein encoded by this gene is a member of the receptor tyrosine kinase subfamily. Although it is similar to other receptor tyrosine kinases, this protein represents a unique structure of the extracellular region that juxtaposes IgL and FNIII repeats. It transduces signals from the extracellular matrix into the cytoplasm by binding growth factors like vitamin K-dependent protein growth-arrest-specific gene 6. It is involved in the stimulation of cell proliferation and can also mediate cell aggregation by homophilic binding. Alternatively spliced transcript variants encoding different isoforms have been identified.</p> <p>Alias Symbols: JTK11, UFO</p> <p>Protein Interaction Partner: RANBP9, UBC, TYRO3, FBXO25, STUB1, HSP90AA1, HSPA1A, ERRF11, TNK2, ELAVL1, CBL, SHC3, SOCS1, PIK3R2, ADAM10, SHC1, GAS6, SRC, PTPN11, PLCG1, PIK3R1, LCK, AXL, GRB2, TENC1, PIK3R3, NCK2,</p> <p>Protein Size: 885</p>
Molecular Weight:	97 kDa
Gene ID:	558
NCBI Accession:	NM_001699 , NP_001690
UniProt:	P30530
Pathways:	RTK Signaling , Cellular Response to Molecule of Bacterial Origin

Application Details

Application Notes:	Optimal working dilutions should be determined experimentally by the investigator.
Comment:	Antigen size: 885 AA
Restrictions:	For Research Use only

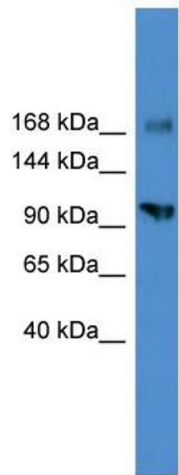
Handling

Format:	Liquid
Concentration:	Lot specific
Buffer:	Liquid. Purified antibody supplied in 1x PBS buffer with 0.09 % (w/v) sodium azide and 2 % sucrose.
Preservative:	Sodium azide
Precaution of Use:	This product contains Sodium azide: a POISONOUS AND HAZARDOUS SUBSTANCE which should be handled by trained staff only.

Handling

Handling Advice:	Avoid repeated freeze-thaw cycles.
Storage:	-20 °C
Storage Comment:	For short term use, store at 2-8°C up to 1 week. For long term storage, store at -20°C in small aliquots to prevent freeze-thaw cycles.

Validation report #103662 for Western Blotting (WB)

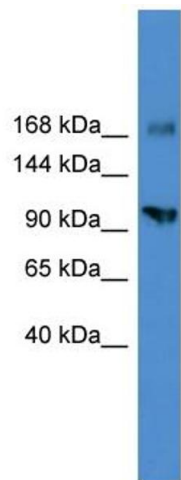


Western Blotting

Image 1. WB Suggested Anti-AXL Antibody Titration: 0.2-1 ug/ml

ELISA Titer: 1:312500

Positive Control: Human Placenta



Rabbit Anti-AXL Antibody
Catalog Number: ARP59004
Lot Number: QC29973
Lane: Placenta Lysate

Antibody Titration: 0.25µg/ml
Gel Concentration: 6-18%

Western Blotting

Image 2. WB Suggested Anti-AXL

Antibody Titration: 0.2-1 µg/mL ELISA Titer: 1:12500

Positive Control: Human Placenta