



[Go to Product page](#)

Datasheet for ABIN2787914  
**anti-LRRFIP2 antibody (N-Term)**

2 Images

Overview

Quantity:	100 µL
Target:	LRRFIP2
Binding Specificity:	N-Term
Reactivity:	Human, Rat, Mouse, Horse, Rabbit, Cow, Pig, Dog, Zebrafish (Danio rerio)
Host:	Rabbit
Clonality:	Polyclonal
Conjugate:	This LRRFIP2 antibody is un-conjugated
Application:	Western Blotting (WB)

Product Details

Immunogen:	The immunogen is a synthetic peptide directed towards the N terminal region of human LRRFIP2
Sequence:	RELERQQKEL DEKSDKQYAE NYTRPSSRNS ASATTPLSGN SSRRGSGDTS
Predicted Reactivity:	Cow: 100%, Dog: 100%, Horse: 100%, Human: 100%, Mouse: 100%, Pig: 100%, Rabbit: 100%, Rat: 100%, Zebrafish: 77%
Characteristics:	This is a rabbit polyclonal antibody against LRRFIP2. It was validated on Western Blot.
Purification:	Affinity Purified

Target Details

Target:	LRRFIP2
---------	---------

## Target Details

---

Alternative Name:	LRRFIP2 ( <a href="#">LRRFIP2 Products</a> )
Background:	The function of LRRFIP2 remains unknown. Alias Symbols: DKFZp434H2035, FLJ20248, FLJ22683, FLJ58304, HUF1-2 Protein Interaction Partner: ATPAF2, UBC, PAN2, CFTR, UBD, MYD88, ELAVL1, Haus4, Gorasp1, FLII, Protein Size: 424
Molecular Weight:	48 kDa
Gene ID:	9209
NCBI Accession:	<a href="#">NM_001134369</a> , <a href="#">NP_001127841</a>
UniProt:	<a href="#">A8K649</a>

## Application Details

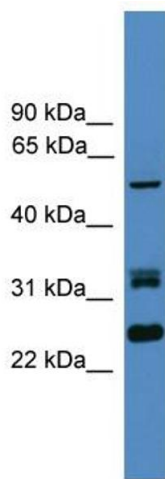
---

Application Notes:	Optimal working dilutions should be determined experimentally by the investigator.
Comment:	Antigen size: 424 AA
Restrictions:	For Research Use only

## Handling

---

Format:	Liquid
Concentration:	Lot specific
Buffer:	Liquid. Purified antibody supplied in 1x PBS buffer with 0.09 % (w/v) sodium azide and 2 % sucrose.
Preservative:	Sodium azide
Precaution of Use:	This product contains Sodium azide: a POISONOUS AND HAZARDOUS SUBSTANCE which should be handled by trained staff only.
Handling Advice:	Avoid repeated freeze-thaw cycles.
Storage:	-20 °C
Storage Comment:	For short term use, store at 2-8°C up to 1 week. For long term storage, store at -20°C in small aliquots to prevent freeze-thaw cycles.



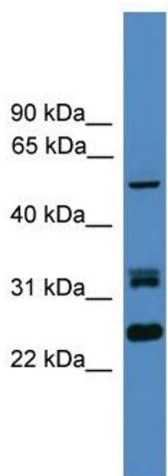
### Western Blotting

#### Image 1. WB Suggested Anti-LRRFIP2 Antibody Titration:

0.2-1 ug/ml

**ELISA Titer:** 1:1562500

**Positive Control:** HT1080 cell lysate



Rabbit Anti-LRRFIP2 Antibody  
Catalog Number: ARP59017  
Lot Number: QC29980  
Lane: HT1080 Cell Lysate

Antibody Titration: 1.0µg/ml  
Gel Concentration: 12%

### Western Blotting

#### Image 2. WB Suggested Anti-LRRFIP2

Antibody Titration: 0.2-1 µg/mL ELISA Titer: 1:1562500

Positive Control: HT1080 cell lysate