



Datasheet for ABIN2787921
anti-TLR8 antibody (C-Term)



[Go to Product page](#)

2 Images

Overview

Quantity:	100 µL
Target:	TLR8
Binding Specificity:	C-Term
Reactivity:	Human, Mouse, Rat, Dog, Cow, Goat, Guinea Pig, Horse, Sheep, Rabbit
Host:	Rabbit
Clonality:	Polyclonal
Conjugate:	This TLR8 antibody is un-conjugated
Application:	Western Blotting (WB)

Product Details

Immunogen:	The immunogen is a synthetic peptide directed towards the C terminal region of human TLR8
Sequence:	LEPVLQHSQY LRLRQRICKS SILQWPDNPK AEGLFWQTLR NVVLTENDSR
Predicted Reactivity:	Cow: 100%, Dog: 100%, Goat: 100%, Guinea Pig: 100%, Horse: 100%, Human: 100%, Mouse: 86%, Rabbit: 93%, Rat: 93%, Sheep: 100%
Characteristics:	This is a rabbit polyclonal antibody against TLR8. It was validated on Western Blot.
Purification:	Affinity Purified

Target Details

Target:	TLR8
Alternative Name:	TLR8 (TLR8 Products)

Target Details

Background: The protein encoded by this gene is a member of the Toll-like receptor (TLR) family which plays a fundamental role in pathogen recognition and activation of innate immunity. TLRs are highly conserved from *Drosophila* to humans and share structural and functional similarities. They recognize pathogen-associated molecular patterns (PAMPs) that are expressed on infectious agents, and mediate the production of cytokines necessary for the development of effective immunity. The various TLRs exhibit different patterns of expression. This gene is predominantly expressed in lung and peripheral blood leukocytes, and lies in close proximity to another family member, TLR7, on chromosome X.

Alias Symbols: CD288, MGC119599, MGC119600

Protein Interaction Partner: BTK, UBC, MYD88,

Protein Size: 1041

Molecular Weight: 120 kDa

Gene ID: 51311

NCBI Accession: [NM_138636](#), [NP_619542](#)

UniProt: [Q9NR97](#)

Pathways: [TLR Signaling](#), [Activation of Innate immune Response](#), [Toll-Like Receptors Cascades](#)

Application Details

Application Notes: Optimal working dilutions should be determined experimentally by the investigator.

Comment: Antigen size: 1041 AA

Restrictions: For Research Use only

Handling

Format: Liquid

Concentration: Lot specific

Buffer: Liquid. Purified antibody supplied in 1x PBS buffer with 0.09 % (w/v) sodium azide and 2 % sucrose.

Preservative: Sodium azide

Precaution of Use: This product contains Sodium azide: a POISONOUS AND HAZARDOUS SUBSTANCE which should be handled by trained staff only.

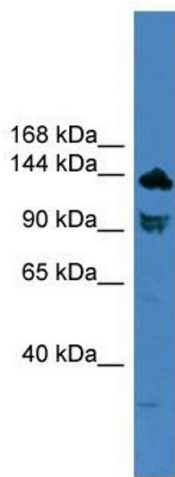
Handling Advice: Avoid repeated freeze-thaw cycles.

Handling

Storage: -20 °C

Storage Comment: For short term use, store at 2-8°C up to 1 week. For long term storage, store at -20°C in small aliquots to prevent freeze-thaw cycles.

Images



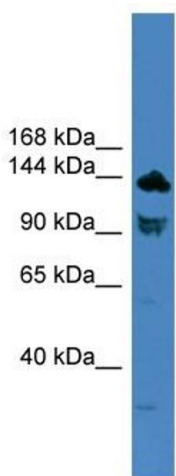
Western Blotting

Image 1. WB Suggested Anti-TLR8 Antibody Titration: 0.2-

1 ug/ml

ELISA Titer: 1:1562500

Positive Control: 293T cell lysate



Rabbit Anti-TLR8 Antibody
Catalog Number: ARP59048
Lot Number: QC30019
Lane: 293T Cell Lysate

Antibody Titration: 1.0µg/ml
Gel Concentration: 6-18%

Western Blotting

Image 2. WB Suggested Anti-TLR8

Antibody Titration: 0.2-1 µg/mL ELISA Titer: 1:1562500

Positive Control: 93T cell lysate