

Datasheet for ABIN2787952  
**anti-NFATC1 antibody (N-Term)**[Go to Product page](#)

## 2 Images

## Overview

Quantity:	100 µL
Target:	NFATC1
Binding Specificity:	N-Term
Reactivity:	Human, Mouse, Rat, Guinea Pig, Dog, Rabbit, Cow, Horse, Zebrafish (Danio rerio)
Host:	Rabbit
Clonality:	Polyclonal
Conjugate:	This NFATC1 antibody is un-conjugated
Application:	Western Blotting (WB)

## Product Details

Immunogen:	The immunogen is a synthetic peptide directed towards the N terminal region of human NFATC1
Sequence:	HVSFYVCNGK RKRSQYQRFT YLPANVPIIK TEPTDDYEPA PTCGPVSQGL
Predicted Reactivity:	Cow: 93%, Dog: 93%, Guinea Pig: 93%, Horse: 93%, Human: 100%, Mouse: 100%, Rabbit: 86%, Rat: 100%, Zebrafish: 100%
Characteristics:	This is a rabbit polyclonal antibody against NFATC1. It was validated on Western Blot.
Purification:	Affinity Purified

## Target Details

Target:	NFATC1
---------	--------

## Target Details

Alternative Name:	NFATC1 ( <a href="#">NFATC1 Products</a> )
Background:	<p>NFATC1 is a component of the nuclear factor of activated T cells DNA-binding transcription complex. This complex consists of at least two components: a preexisting cytosolic component that translocates to the nucleus upon T cell receptor (TCR) stimulation, and an inducible nuclear component. Proteins belonging to this family of transcription factors play a central role in inducible gene transcription during immune response. The product of this gene is an inducible nuclear component. It functions as a major molecular target for the immunosuppressive drugs such as cyclosporin A. Different isoforms of this protein may regulate inducible expression of different cytokine genes.</p> <p>Alias Symbols: MGC138448, NF-ATC, NFAT2, NFATc</p> <p>Protein Interaction Partner: YWHAQ, OGT, PML, GZF1, FOXP3, HDAC4, PIAS1, SUMO1, UBE2I, RPS6KB1, RPS6KA3, HDAC2, HDAC1, HNRNPA1, TUBA1A, KPNB1, HDAC5, KAT2B, EP300, PARP1, HDAC3, PPP3R1, MAPK14, GNB2L1, PRKCA, SPI1, PIM1, EGR2, EGR1,</p> <p>Protein Size: 353</p>
Molecular Weight:	38 kDa
Gene ID:	4772
NCBI Accession:	<a href="#">NM_172388</a> , <a href="#">NP_765976</a>
UniProt:	<a href="#">O95644</a>
Pathways:	<a href="#">RTK Signaling</a> , <a href="#">WNT Signaling</a> , <a href="#">Fc-epsilon Receptor Signaling Pathway</a>

## Application Details

Application Notes:	Optimal working dilutions should be determined experimentally by the investigator.
Comment:	Antigen size: 353 AA
Restrictions:	For Research Use only

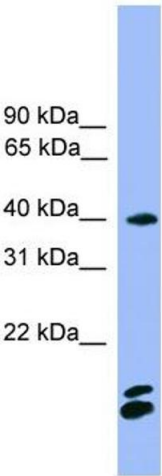
## Handling

Format:	Liquid
Concentration:	Lot specific
Buffer:	Liquid. Purified antibody supplied in 1x PBS buffer with 0.09 % (w/v) sodium azide and 2 % sucrose.
Preservative:	Sodium azide

Handling

Precaution of Use:	This product contains Sodium azide: a POISONOUS AND HAZARDOUS SUBSTANCE which should be handled by trained staff only.
Handling Advice:	Avoid repeated freeze-thaw cycles.
Storage:	-20 °C
Storage Comment:	For short term use, store at 2-8°C up to 1 week. For long term storage, store at -20°C in small aliquots to prevent freeze-thaw cycles.

Images



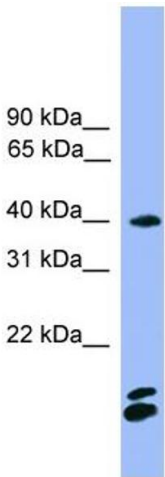
Western Blotting

Image 1. WB Suggested Anti-NFATC1 Antibody Titration:

0.2-1 ug/ml

**ELISA Titer:** 1:1562500

**Positive Control:** Human brain



Rabbit Anti-NFATC1 Antibody  
Catalog Number: ARP59145  
Lot Number: QC30242  
Lane: Fetal Brain Lysate

Antibody Titration: 1.0µg/ml  
Gel Concentration: 12%

Western Blotting

Image 2. WB Suggested Anti-NFATC1

Antibody Titration: 0.2-1 µg/mL ELISA Titer: 1:1562500

Positive Control: Human brain