

Datasheet for ABIN2787954
anti-SPATA2 antibody (C-Term)



[Go to Product page](#)

1 Image

Overview

Quantity:	100 µL
Target:	SPATA2
Binding Specificity:	C-Term
Reactivity:	Human, Rat, Mouse, Dog, Horse, Guinea Pig
Host:	Rabbit
Clonality:	Polyclonal
Conjugate:	This SPATA2 antibody is un-conjugated
Application:	Western Blotting (WB)

Product Details

Immunogen:	The immunogen is a synthetic peptide directed towards the C terminal region of human SPATA2
Sequence:	DRLPHLHSKS KPSTTPTSRC GFCNRPGATN TCTQCSKVSC DACLSAYHYD
Predicted Reactivity:	Dog: 86%, Guinea Pig: 86%, Horse: 79%, Human: 100%, Mouse: 85%, Rat: 86%
Characteristics:	This is a rabbit polyclonal antibody against SPATA2. It was validated on Western Blot.
Purification:	Affinity Purified

Target Details

Target:	SPATA2
Alternative Name:	SPATA2 (SPATA2 Products)

Target Details

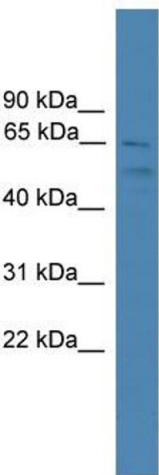
Background:	SPATA2 may have a role in the regulation of spermatogenesis. Alias Symbols: FLJ13167, KIAA0757, PD1, tamo Protein Interaction Partner: LZTS2, MAD1L1, TRIM27, GOLGA2, PPP1CA, APP, ELAVL1, UBC, LIN7C, UIMC1, BABAM1, PFDN6, SSNA1, CASK, PFDN4, GNAL, CYLD, CEP72, TRAF2, DUT, PTPN6, Protein Size: 520
Molecular Weight:	58 kDa
Gene ID:	9825
NCBI Accession:	NM_001135773 , NP_001129245
UniProt:	Q9UM82

Application Details

Application Notes:	Optimal working dilutions should be determined experimentally by the investigator.
Comment:	Antigen size: 520 AA
Restrictions:	For Research Use only

Handling

Format:	Liquid
Concentration:	Lot specific
Buffer:	Liquid. Purified antibody supplied in 1x PBS buffer with 0.09 % (w/v) sodium azide and 2 % sucrose.
Preservative:	Sodium azide
Precaution of Use:	This product contains Sodium azide: a POISONOUS AND HAZARDOUS SUBSTANCE which should be handled by trained staff only.
Handling Advice:	Avoid repeated freeze-thaw cycles.
Storage:	-20 °C
Storage Comment:	For short term use, store at 2-8°C up to 1 week. For long term storage, store at -20°C in small aliquots to prevent freeze-thaw cycles.



Western Blotting

Image 1. WB Suggested Anti-SPATA2 Antibody Titration:
0.2-1 ug/ml ELISA Titer: 1:1562500 Positive Control:
PANC1 cell lysate