

Datasheet for ABIN2787963
anti-PSMF1 antibody (Middle Region)[Go to Product page](#)

2 Images

Overview

Quantity:	100 µL
Target:	PSMF1
Binding Specificity:	Middle Region
Reactivity:	Human, Mouse, Rat, Dog, Cow, Rabbit, Horse, Guinea Pig
Host:	Rabbit
Clonality:	Polyclonal
Conjugate:	This PSMF1 antibody is un-conjugated
Application:	Western Blotting (WB)

Product Details

Immunogen:	The immunogen is a synthetic peptide directed towards the middle region of human PSMF1
Sequence:	DYIDAEHLGD FHRTYKNSEE LRSRIVSGII TPIHEQWEKA NVSSPHREFP
Predicted Reactivity:	Cow: 93%, Dog: 100%, Guinea Pig: 100%, Horse: 93%, Human: 100%, Mouse: 100%, Rabbit: 100%, Rat: 100%
Characteristics:	This is a rabbit polyclonal antibody against PSMF1. It was validated on Western Blot.
Purification:	Affinity Purified

Target Details

Target:	PSMF1
Alternative Name:	PSMF1 (PSMF1 Products)

Target Details

Background:	<p>The 26S proteasome is a multicatalytic proteinase complex with a highly ordered structure composed of 2 complexes, a 20S core and a 19S regulator. The 20S core is composed of 4 rings of 28 non-identical subunits, 2 rings are composed of 7 alpha subunits and 2 rings are composed of 7 beta subunits. The 19S regulator is composed of a base, which contains 6 ATPase subunits and 2 non-ATPase subunits, and a lid, which contains up to 10 non-ATPase subunits. Proteasomes are distributed throughout eukaryotic cells at a high concentration and cleave peptides in an ATP/ubiquitin-dependent process in a non-lysosomal pathway. An essential function of a modified proteasome, the immunoproteasome, is the processing of class I MHC peptides. This gene encodes a protein that inhibits the activation of the proteasome by the 11S and 19S regulators. Alternative transcript variants have been identified for this gene.</p> <p>Alias Symbols: PI31</p> <p>Protein Interaction Partner: FBXO7, SHFM1, UBC, BEND7, RHOFX2, KHDRBS3, PAK7, LDOC1, RBFOX2, PSMA7, DVL3, RALYL, RBFOX1, QKI, CD2BP2, CUL1, PSMA2, MIEF2, CCDC85B, RNF126, PDLIM7, HOOK2, NUDT21, CTBP2, TRAF2, MAGEA11, RBMX,</p> <p>Protein Size: 271</p>
Molecular Weight:	30 kDa
Gene ID:	9491
NCBI Accession:	NM_006814 , NP_006805
UniProt:	Q92530
Pathways:	Mitotic G1-G1/S Phases , DNA Replication , Synthesis of DNA

Application Details

Application Notes:	Optimal working dilutions should be determined experimentally by the investigator.
Comment:	Antigen size: 271 AA
Restrictions:	For Research Use only

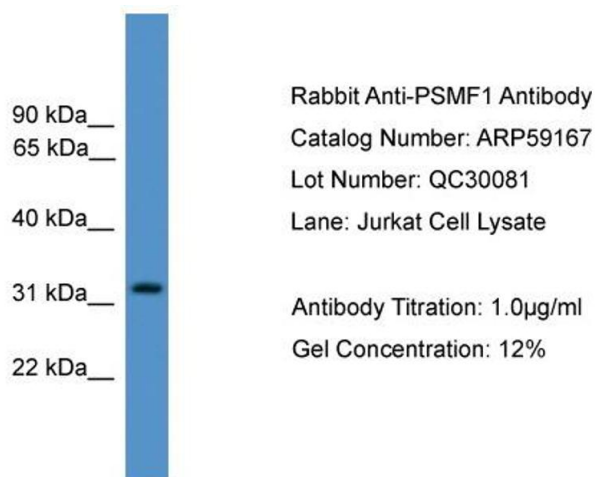
Handling

Format:	Liquid
Concentration:	Lot specific
Buffer:	Liquid. Purified antibody supplied in 1x PBS buffer with 0.09 % (w/v) sodium azide and 2 % sucrose.

Handling

Preservative:	Sodium azide
Precaution of Use:	This product contains Sodium azide: a POISONOUS AND HAZARDOUS SUBSTANCE which should be handled by trained staff only.
Handling Advice:	Avoid repeated freeze-thaw cycles.
Storage:	-20 °C
Storage Comment:	For short term use, store at 2-8°C up to 1 week. For long term storage, store at -20°C in small aliquots to prevent freeze-thaw cycles.

Images

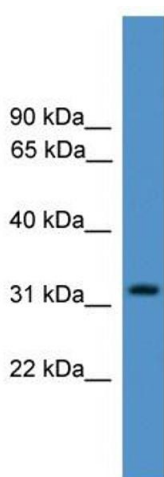


Western Blotting

Image 1. WB Suggested Anti-PSMF1

Antibody Titration: 0.2-1 µg/mL ELISA Titer: 1::2500

Positive Control: Jurkat cell lysate



Western Blotting

Image 2. WB Suggested Anti-PSMF1 Antibody Titration:

0.2-1 ug/ml

ELISA Titer: 1:62500

Positive Control: Jurkat cell lysate