

Datasheet for ABIN2787972

## anti-alpha 2 Antiplasmin antibody (N-Term)



[Go to Product page](#)

### 2 Images

#### Overview

Quantity:	100 µL
Target:	alpha 2 Antiplasmin (SERPINF2)
Binding Specificity:	N-Term
Reactivity:	Human, Cow, Horse
Host:	Rabbit
Clonality:	Polyclonal
Conjugate:	This alpha 2 Antiplasmin antibody is un-conjugated
Application:	Western Blotting (WB)

#### Product Details

Immunogen:	The immunogen is a synthetic peptide directed towards the N terminal region of human SERPINF2
Sequence:	CSRDPPTPEQT HRLARAMMAF TADLFSLVAQ TSTCPNLILS PLSVALALSH
Predicted Reactivity:	Cow: 91%, Horse: 100%, Human: 100%
Characteristics:	This is a rabbit polyclonal antibody against SERPINF2. It was validated on Western Blot.
Purification:	Affinity Purified

#### Target Details

Target:	alpha 2 Antiplasmin (SERPINF2)
Alternative Name:	SERPINF2 ( <a href="#">SERPINF2 Products</a> )

## Target Details

Background:	<p>This gene encodes a member of the serpin family of serine protease inhibitors. The protein is a major inhibitor of plasmin, which degrades fibrin and various other proteins. Consequently, the proper function of this gene has a major role in regulating the blood clotting pathway.</p> <p>Mutations in this gene result in alpha-2-plasmin inhibitor deficiency, which is characterized by severe hemorrhagic diathesis. Multiple transcript variants encoding different isoforms have been found for this gene.</p> <p>Alias Symbols: A2AP, AAP, ALPHA-2-PI, API, PLI</p> <p>Protein Interaction Partner: FN1, BCAP31, SSR1, UBC, CANX, SERPINB12, F11, KLK13, KLK6, PRSS1, SERPINF2, PLAUI, TGM2, PLG, KLK2, FGA, F13A1, CFD, ELANE, DEFA1, CTRB1,</p> <p>Protein Size: 491</p>
Molecular Weight:	54 kDa
Gene ID:	5345
NCBI Accession:	<a href="#">NM_000934</a> , <a href="#">NP_000925</a>
UniProt:	<a href="#">P08697</a>
Pathways:	<a href="#">Regulation of Systemic Arterial Blood Pressure by Hormones</a>

## Application Details

Application Notes:	Optimal working dilutions should be determined experimentally by the investigator.
Comment:	Antigen size: 491 AA
Restrictions:	For Research Use only

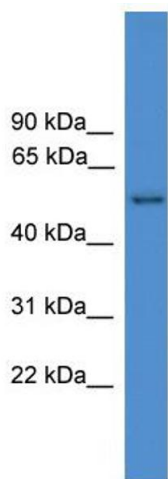
## Handling

Format:	Liquid
Concentration:	Lot specific
Buffer:	Liquid. Purified antibody supplied in 1x PBS buffer with 0.09 % (w/v) sodium azide and 2 % sucrose.
Preservative:	Sodium azide
Precaution of Use:	This product contains Sodium azide: a POISONOUS AND HAZARDOUS SUBSTANCE which should be handled by trained staff only.
Handling Advice:	Avoid repeated freeze-thaw cycles.

Handling

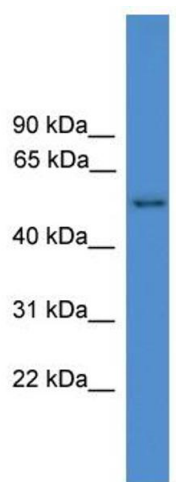
Storage:	-20 °C
Storage Comment:	For short term use, store at 2-8°C up to 1 week. For long term storage, store at -20°C in small aliquots to prevent freeze-thaw cycles.

Images



Western Blotting

**Image 1. WB Suggested Anti-SERPINF2 Antibody**  
**Titration:** 0.2-1 ug/ml  
**ELISA Titer:** 1:12500  
**Positive Control:** MCF7 cell lysate



Rabbit Anti-SERPINF2 Antibody  
Catalog Number: ARP59189  
Lot Number: QC30099  
Lane: MCF7 Cell Lysate  
  
Antibody Titration: 1.0µg/ml  
Gel Concentration: 12%

Western Blotting

**Image 2. WB Suggested Anti-SERPINF2**  
Antibody Titration: 0.2-1 µg/mL ELISA Titer: 1:12500  
Positive Control: MCF7 cell lysate