

Datasheet for ABIN2787979
anti-SLPI antibody (N-Term)[Go to Product page](#)

3 Images

Overview

Quantity:	100 µL
Target:	SLPI
Binding Specificity:	N-Term
Reactivity:	Human
Host:	Rabbit
Clonality:	Polyclonal
Conjugate:	This SLPI antibody is un-conjugated
Application:	Western Blotting (WB)

Product Details

Immunogen:	The immunogen is a synthetic peptide directed towards the N terminal region of human SLPI
Sequence:	VLLALGTLAP WAVEGSGKSF KAGVCPPKKS AQCLRYKKPE CQSDWQCPGK
Predicted Reactivity:	Human: 100%
Characteristics:	This is a rabbit polyclonal antibody against SLPI. It was validated on Western Blot.
Purification:	Affinity Purified

Target Details

Target:	SLPI
Alternative Name:	SLPI (SLPI Products)
Background:	This gene encodes a secreted inhibitor which protects epithelial tissues from serine proteases.

Target Details

It is found in various secretions including seminal plasma, cervical mucus, and bronchial secretions, and has affinity for trypsin, leukocyte elastase, and cathepsin G. Its inhibitory effect contributes to the immune response by protecting epithelial surfaces from attack by endogenous proteolytic enzymes, the protein is also thought to have broad-spectrum anti-biotic activity.

Alias Symbols: ALK1, ALP, BLPI, HUSI, HUSI-I, MPI, WAP4, WFDC4

Protein Interaction Partner: FAM9B, SGTA, PLSCR1, PRSS2, KLK3, GRN, ELANE, CTSL, CTSS, CTSB,

Protein Size: 132

Molecular Weight:	12 kDa
-------------------	--------

Gene ID:	6590
----------	------

NCBI Accession:	NM_003064 , NP_003055
-----------------	---

UniProt:	P03973
----------	------------------------

Application Details

Application Notes:	Optimal working dilutions should be determined experimentally by the investigator.
--------------------	--

Comment:	Antigen size: 132 AA
----------	----------------------

Restrictions:	For Research Use only
---------------	-----------------------

Handling

Format:	Liquid
---------	--------

Concentration:	Lot specific
----------------	--------------

Buffer:	Liquid. Purified antibody supplied in 1x PBS buffer with 0.09 % (w/v) sodium azide and 2 % sucrose.
---------	---

Preservative:	Sodium azide
---------------	--------------

Precaution of Use:	This product contains Sodium azide: a POISONOUS AND HAZARDOUS SUBSTANCE which should be handled by trained staff only.
--------------------	--

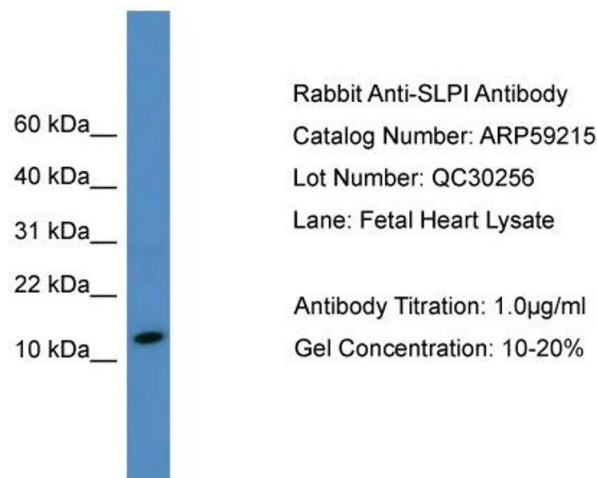
Handling Advice:	Avoid repeated freeze-thaw cycles.
------------------	------------------------------------

Storage:	-20 °C
----------	--------

Storage Comment:	For short term use, store at 2-8°C up to 1 week. For long term storage, store at -20°C in small
------------------	---

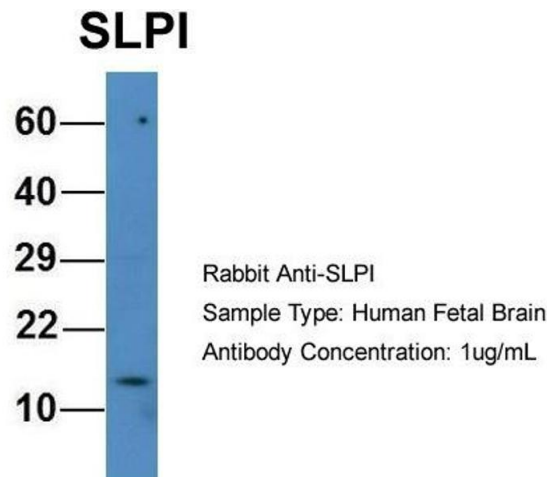
aliquots to prevent freeze-thaw cycles.

Images



Western Blotting

Image 1. WB Suggested Anti-SLPI
Antibody Titration: 0.2-1 µg/mL ELISA Titer: 1:1562500
Positive Control: Human heart



Western Blotting

Image 2. Host: Rabbit
Target Name: SLPI
Sample Tissue: Human Fetal Brain
Antibody Dilution: 1.0 µg/mL



Western Blotting

Image 3. WB Suggested Anti-SLPI Antibody Titration: 0.2-1 µg/ml
ELISA Titer: 1:1562500
Positive Control: Human heart