

Datasheet for ABIN2787992
anti-SERPINB8 antibody (C-Term)

2 Images

[Go to Product page](#)

Overview

Quantity:	100 µL
Target:	SERPINB8
Binding Specificity:	C-Term
Reactivity:	Human, Mouse, Rat, Rabbit, Dog, Horse, Cow, Guinea Pig
Host:	Rabbit
Clonality:	Polyclonal
Conjugate:	This SERPINB8 antibody is un-conjugated
Application:	Western Blotting (WB)

Product Details

Immunogen:	The immunogen is a synthetic peptide directed towards the C terminal region of human SERPINB8
Sequence:	LVNAIFYKGGK WNEQFDRKYT RGMLFKTNEE KKTVMQMMFKE AKFKMGYADE
Predicted Reactivity:	Cow: 93%, Dog: 86%, Guinea Pig: 93%, Horse: 93%, Human: 100%, Mouse: 86%, Rabbit: 93%, Rat: 93%
Characteristics:	This is a rabbit polyclonal antibody against SERPINB8. It was validated on Western Blot.
Purification:	Affinity Purified

Target Details

Target:	SERPINB8
---------	----------

Target Details

Alternative Name:	SERPINB8 (SERPINB8 Products)
Background:	<p>The superfamily of high molecular weight serine proteinase inhibitors (serpins) regulate a diverse set of intracellular and extracellular processes such as complement activation, fibrinolysis, coagulation, cellular differentiation, tumor suppression, apoptosis, and cell migration. Serpins are characterized by well-conserved a tertiary structure that consists of 3 beta sheets and 8 or 9 alpha helices (Huber and Carrell, 1989 [PubMed 2690952]). A critical portion of the molecule, the reactive center loop connects beta sheets A and C. Protease inhibitor-8 (PI8, SERPINB8) is a member of the ov-serpin subfamily, which, relative to the archetypal serpin PI1 (MIM 107400), is characterized by a high degree of homology to chicken ovalbumin, lack of N- and C-terminal extensions, absence of a signal peptide, and a serine rather than an asparagine residue at the penultimate position (summary by Bartuski et al., 1997 [PubMed 9268635]).</p> <p>Alias Symbols: CAP2, PI8</p> <p>Protein Interaction Partner: SUMO2, LARS, UBC, CAP1, PRSS1, F10, F2, FURIN, BCL2,</p> <p>Protein Size: 242</p>
Molecular Weight:	27 kDa
Gene ID:	5271
NCBI Accession:	NM_001031848 , NP_001027018
UniProt:	Q8N178

Application Details

Application Notes:	Optimal working dilutions should be determined experimentally by the investigator.
Comment:	Antigen size: 242 AA
Restrictions:	For Research Use only

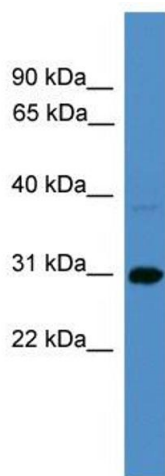
Handling

Format:	Liquid
Concentration:	Lot specific
Buffer:	Liquid. Purified antibody supplied in 1x PBS buffer with 0.09 % (w/v) sodium azide and 2 % sucrose.
Preservative:	Sodium azide

Handling

Precaution of Use:	This product contains Sodium azide: a POISONOUS AND HAZARDOUS SUBSTANCE which should be handled by trained staff only.
Handling Advice:	Avoid repeated freeze-thaw cycles.
Storage:	-20 °C
Storage Comment:	For short term use, store at 2-8°C up to 1 week. For long term storage, store at -20°C in small aliquots to prevent freeze-thaw cycles.

Images



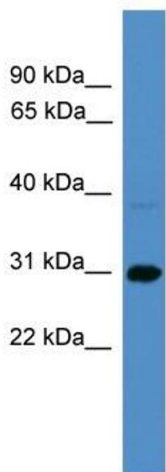
Western Blotting

Image 1. WB Suggested Anti-SERPINB8 Antibody

Titration: 0.2-1 ug/ml

ELISA Titer: 1:312500

Positive Control: Jurkat cell lysate



Rabbit Anti-SERPINB8 Antibody

Catalog Number: ARP59252

Lot Number: QC30158

Lane: Jurkat Cell Lysate

Antibody Titration: 1.0µg/ml

Gel Concentration: 12%

Western Blotting

Image 2. WB Suggested Anti-SERPINB8

Antibody Titration: 0.2-1 µg/mL **ELISA Titer:** 1:12500

Positive Control: Jurkat cell lysate