



[Go to Product page](#)

Datasheet for ABIN2787994

anti-CDC26 antibody (C-Term)

2 Images

Overview

Quantity:	100 µL
Target:	CDC26
Binding Specificity:	C-Term
Reactivity:	Human, Mouse, Rat, Cow, Dog, Horse, Rabbit, Guinea Pig
Host:	Rabbit
Clonality:	Polyclonal
Conjugate:	This CDC26 antibody is un-conjugated
Application:	Western Blotting (WB)

Product Details

Immunogen:	The immunogen is a synthetic peptide directed towards the C terminal region of human CDC26
Sequence:	KQKEDVEVVG GSDGEGAIGL SSDPKSREQM INDRIGYKPKQ PKPNNRSSQF
Predicted Reactivity:	Cow: 100%, Dog: 100%, Guinea Pig: 100%, Horse: 100%, Human: 100%, Mouse: 79%, Rabbit: 93%, Rat: 100%
Characteristics:	This is a rabbit polyclonal antibody against CDC26. It was validated on Western Blot.
Purification:	Affinity Purified

Target Details

Target:	CDC26
Alternative Name:	CDC26 (CDC26 Products)

Target Details

Background: The protein encoded by this gene is highly similar to *Saccharomyces cerevisiae* Cdc26, a component of cell cycle anaphase-promoting complex (APC). APC is composed of a group of highly conserved proteins and functions as a cell cycle-regulated ubiquitin-protein ligase. APC thus is responsible for the cell cycle regulated proteolysis of various proteins.

Alias Symbols: C9orf17, APC12, ANAPC12

Protein Interaction Partner: ANAPC2, CDC16, ANAPC4, CDC20, UBC, PHF8, SOX2, ANAPC15, ANAPC1, ANAPC13, CDC27, Gm9174, Anapc5, Mad2l1, Cdc23, Bub1b, APC2, CDH1,

Protein Size: 85

Molecular Weight: 10 kDa

Gene ID: 246184

NCBI Accession: [NM_139286](#), [NP_644815](#)

UniProt: [Q8NHZ8](#)

Application Details

Application Notes: Optimal working dilutions should be determined experimentally by the investigator.

Comment: Antigen size: 85 AA

Restrictions: For Research Use only

Handling

Format: Liquid

Concentration: Lot specific

Buffer: Liquid. Purified antibody supplied in 1x PBS buffer with 0.09 % (w/v) sodium azide and 2 % sucrose.

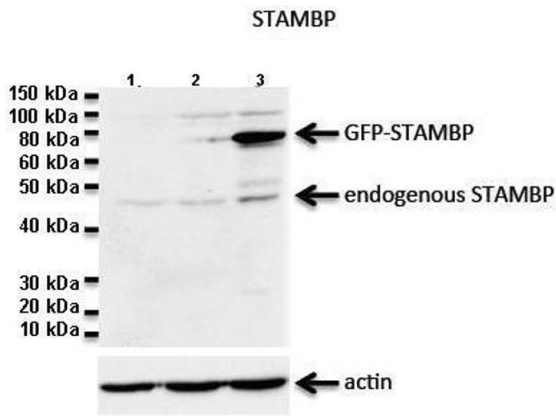
Preservative: Sodium azide

Precaution of Use: This product contains Sodium azide: a POISONOUS AND HAZARDOUS SUBSTANCE which should be handled by trained staff only.

Handling Advice: Avoid repeated freeze-thaw cycles.

Storage: -20 °C

Storage Comment: For short term use, store at 2-8°C up to 1 week. For long term storage, store at -20°C in small aliquots to prevent freeze-thaw cycles.



See Immunoblot 2 Data and customer Feedback for more Information

Western Blotting

Image 1. Lanes: 1: 20ug Jukart cell lysate, 2: 20ug untransfected HeLa lysate, 3: 20ug GFP-STAMBP transfected HeLa lysate Primary Antibody Dilution: 1:1000 Secondary Antibody: Goat anti-rabbit-HRP Secondary Antibody Dilution: 1:2000 Gene Name: CDC26 Submitted by: Dr. N. Blake, University of Liverpool



Western Blotting

Image 2. WB Suggested Anti-CDC26 Antibody Titration: 0.2-1 ug/ml ELISA Titer: 1:1562500 Positive Control: Human Placenta