

Datasheet for ABIN2787995
anti-CDC26 antibody (Middle Region)[Go to Product page](#)

2 Images

Overview

Quantity:	100 µL
Target:	CDC26
Binding Specificity:	Middle Region
Reactivity:	Human, Mouse, Rat, Cow, Dog, Horse, Rabbit, Guinea Pig, Pig
Host:	Rabbit
Clonality:	Polyclonal
Conjugate:	This CDC26 antibody is un-conjugated
Application:	Western Blotting (WB)

Product Details

Immunogen:	The immunogen is a synthetic peptide directed towards the middle region of human CDC26
Sequence:	NIRKDLETRK KQKEDVEVVG GSDGEGAIGL SSDPKSREQM INDRIGYKPQ
Predicted Reactivity:	Cow: 100%, Dog: 100%, Guinea Pig: 86%, Horse: 100%, Human: 100%, Mouse: 100%, Pig: 100%, Rabbit: 100%, Rat: 100%
Characteristics:	This is a rabbit polyclonal antibody against CDC26. It was validated on Western Blot.
Purification:	Affinity Purified

Target Details

Target:	CDC26
Alternative Name:	CDC26 (CDC26 Products)

Target Details

Background:	<p>The protein encoded by this gene is highly similar to <i>Saccharomyces cerevisiae</i> Cdc26, a component of cell cycle anaphase-promoting complex (APC). APC is composed of a group of highly conserved proteins and functions as a cell cycle-regulated ubiquitin-protein ligase. APC thus is responsible for the cell cycle regulated proteolysis of various proteins.</p> <p>Alias Symbols: C9orf17, APC12, ANAPC12</p> <p>Protein Interaction Partner: ANAPC2, CDC16, ANAPC4, CDC20, UBC, PHF8, SOX2, ANAPC15, ANAPC1, ANAPC13, CDC27, Gm9174, Anapc5, Mad2l1, Cdc23, Bub1b, APC2, CDH1,</p> <p>Protein Size: 85</p>
-------------	---

Molecular Weight:	10 kDa
-------------------	--------

Gene ID:	246184
----------	--------

NCBI Accession:	NM_139286 , NP_644815
-----------------	---

UniProt:	Q8NHZ8
----------	------------------------

Application Details

Application Notes:	Optimal working dilutions should be determined experimentally by the investigator.
--------------------	--

Comment:	Antigen size: 85 AA
----------	---------------------

Restrictions:	For Research Use only
---------------	-----------------------

Handling

Format:	Liquid
---------	--------

Concentration:	Lot specific
----------------	--------------

Buffer:	Liquid. Purified antibody supplied in 1x PBS buffer with 0.09 % (w/v) sodium azide and 2 % sucrose.
---------	---

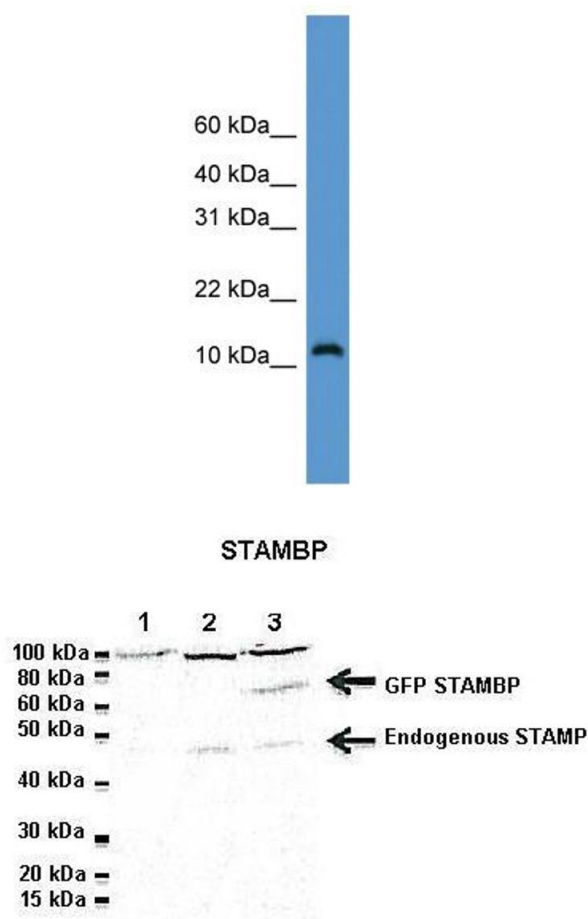
Preservative:	Sodium azide
---------------	--------------

Precaution of Use:	This product contains Sodium azide: a POISONOUS AND HAZARDOUS SUBSTANCE which should be handled by trained staff only.
--------------------	--

Handling Advice:	Avoid repeated freeze-thaw cycles.
------------------	------------------------------------

Storage:	-20 °C
----------	--------

Storage Comment:	For short term use, store at 2-8°C up to 1 week. For long term storage, store at -20°C in small aliquots to prevent freeze-thaw cycles.
------------------	---



Western Blotting

Image 1. WB Suggested Anti-CDC26 Antibody Titration: 0.2-1 ug/ml ELISA Titer: 1:1562500 Positive Control: A549 cell lysate

Western Blotting

Image 2. Lanes: 1: 20ug Jukart cell lysate, 2: 20ug untransfected HeLa lysate, 3: 20ug GFP-STAMBP transfected HeLa lysate Primary Antibody Dilution: 1:1000 Secondary Antibody: Goat anti-rabbit-HRP Secondary Antibody Dilution: 1:2000 Gene Name: CDC26 Submitted by: Dr. N. Blake, University of Liverpool

See Immunoblot 3 Data and customer Feedback for more Information