

Datasheet for ABIN2788037  
**anti-COPS6 antibody (Middle Region)**[Go to Product page](#)

1 Image

1 Publication

## Overview

Quantity:	100 µL
Target:	COPS6
Binding Specificity:	Middle Region
Reactivity:	Human, Mouse, Rat, Rabbit, Cow, Dog, Guinea Pig, Horse, Zebrafish (Danio rerio)
Host:	Rabbit
Clonality:	Polyclonal
Conjugate:	This COPS6 antibody is un-conjugated
Application:	Western Blotting (WB)

## Product Details

Immunogen:	The immunogen is a synthetic peptide directed towards the middle region of human COPS6
Sequence:	DHVARMTATG SGENSTVAEH LIAQHSAIKM LHSRVKLILE YVKASEAGEV
Predicted Reactivity:	Cow: 100%, Dog: 100%, Guinea Pig: 100%, Horse: 100%, Human: 100%, Mouse: 100%, Rabbit: 100%, Rat: 100%, Zebrafish: 93%
Characteristics:	This is a rabbit polyclonal antibody against COPS6. It was validated on Western Blot.
Purification:	Affinity Purified

## Target Details

Target:	COPS6
Alternative Name:	COPS6 ( <a href="#">COPS6 Products</a> )

## Target Details

Background:	<p>The protein encoded by this gene is one of the eight subunits of COP9 signalosome, a highly conserved protein complex that functions as an important regulator in multiple signaling pathways. The structure and function of COP9 signalosome is similar to that of the 19S regulatory particle of 26S proteasome. COP9 signalosome has been shown to interact with SCF-type E3 ubiquitin ligases and act as a positive regulator of E3 ubiquitin ligases. This protein belongs to translation initiation factor 3 (eIF3) superfamily. It is involved in the regulation of cell cycle and likely to be a cellular cofactor for HIV-1 accessory gene product Vpr.</p> <p>Alias Symbols: CSN6, MOV34-34KD</p> <p>Protein Interaction Partner: NEDD8, CUL1, UBC, COPS5, GPS1, SUMO1, POP7, COPS7B, COPS7A, CUL4B, USP7, COPS4, FBXO6, FBXW4, IGHV3OR15-7, vpr, TP63, RFWD2, SFN, IRF5, COPS8, COPS2, COPS3, DDB2, DDB1, ERCC8, TOR1AIP2, LRR1, RBX1, VPRBP, LRRC14, CUL2, CUL3, CUL4A, CUL5, TCEB2, TCEB1, SKP</p> <p>Protein Size: 327</p>
Molecular Weight:	36 kDa
Gene ID:	10980
NCBI Accession:	<a href="#">NM_006833</a> , <a href="#">NP_006824</a>
UniProt:	<a href="#">Q7L5N1</a>
Pathways:	<a href="#">Cell Division Cycle</a>

## Application Details

Application Notes:	Optimal working dilutions should be determined experimentally by the investigator.
Comment:	Antigen size: 327 AA
Restrictions:	For Research Use only

## Handling

Format:	Liquid
Concentration:	Lot specific
Buffer:	Liquid. Purified antibody supplied in 1x PBS buffer with 0.09 % (w/v) sodium azide and 2 % sucrose.
Preservative:	Sodium azide
Precaution of Use:	This product contains Sodium azide: a POISONOUS AND HAZARDOUS SUBSTANCE which

## Handling

should be handled by trained staff only.

Handling Advice: Avoid repeated freeze-thaw cycles.

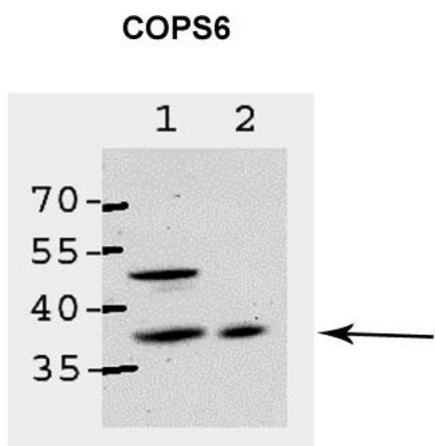
Storage: -20 °C

Storage Comment: For short term use, store at 2-8°C up to 1 week. For long term storage, store at -20°C in small aliquots to prevent freeze-thaw cycles.

## Publications

Product cited in: Pick, Golan, Zimble, Guo, Sharaby, Tsuge, Hofmann, Wei: "The minimal deneddylase core of the COP9 signalosome excludes the Csn6 MPN- domain." in: **PLoS ONE**, Vol. 7, Issue 8, pp. e43980, (2012) ([PubMed](#)).

## Images



See Immunoblot 2 Data and Customer Feedback tab for more information.

### Western Blotting

**Image 1. Sample Type:** 1. ABAE cells

2. CHO-IR cells

**Primary Dilution:** 1:200

**Secondary Antibody:** HRP conjugated anti-rabbit

**Image Submitted By:** Dr. Elah Pick

University of Haifa at Oranim