

Datasheet for ABIN2788038
anti-PSMC6 antibody (C-Term)[Go to Product page](#)

4 Images

Overview

Quantity:	100 µL
Target:	PSMC6
Binding Specificity:	C-Term
Reactivity:	Human, Mouse, Rat, Zebrafish (Danio rerio), Cow, Horse, Rabbit, Dog, Guinea Pig, Saccharomyces cerevisiae
Host:	Rabbit
Clonality:	Polyclonal
Conjugate:	This PSMC6 antibody is un-conjugated
Application:	Western Blotting (WB)

Product Details

Immunogen:	The immunogen is a synthetic peptide directed towards the C terminal region of human PSMC6
Sequence:	GFNGADLRNV CTEAGMFAIR ADHDFVVQED FMKAVRKVAD SKKLESKLDY
Predicted Reactivity:	Cow: 100%, Dog: 100%, Guinea Pig: 100%, Horse: 100%, Human: 100%, Mouse: 100%, Rabbit: 100%, Rat: 100%, Yeast: 86%, Zebrafish: 100%
Characteristics:	This is a rabbit polyclonal antibody against PSMC6. It was validated on Western Blot.
Purification:	Affinity Purified

Target Details

Target:	PSMC6
---------	-------

Target Details

Alternative Name:	PSMC6 (PSMC6 Products)
Background:	<p>The 26S proteasome is a multicatalytic proteinase complex with a highly ordered structure composed of 2 complexes, a 20S core and a 19S regulator. The 20S core is composed of 4 rings of 28 non-identical subunits, 2 rings are composed of 7 alpha subunits and 2 rings are composed of 7 beta subunits. The 19S regulator is composed of a base, which contains 6 ATPase subunits and 2 non-ATPase subunits, and a lid, which contains up to 10 non-ATPase subunits. Proteasomes are distributed throughout eukaryotic cells at a high concentration and cleave peptides in an ATP/ubiquitin-dependent process in a non-lysosomal pathway. An essential function of a modified proteasome, the immunoproteasome, is the processing of class I MHC peptides. This gene encodes one of the ATPase subunits, a member of the triple-A family of ATPases which have a chaperone-like activity. Pseudogenes have been identified on chromosomes 8 and 12.</p> <p>Alias Symbols: CADP44, MGC12520, P44, SUG2, p42</p> <p>Protein Interaction Partner: SDCBP, CCDC146, CYB5R2, HUWE1, UBC, PSMD9, PSMC6, PSMC3, SUMO2, STAU1, PSMD14, MDM2, ABCF1, UBR4, ADRM1, TXNL1, AIMP1, AIMP2, RPS21, RPS15A, RPS12, RPS8, QARS, PSMD12, PSMD11, PSMD8, PSMD4, UCHL5, DYNC1LI1, PSMD3, PSMD2, PSMD1, PSMC5, PSMC2, PSMC1, PARK2,</p> <p>Protein Size: 389</p>
Molecular Weight:	44 kDa
Gene ID:	5706
NCBI Accession:	NM_002806 , NP_002797
UniProt:	P62333
Pathways:	Mitotic G1-G1/S Phases , DNA Replication , Synthesis of DNA , Ubiquitin Proteasome Pathway

Application Details

Application Notes:	Optimal working dilutions should be determined experimentally by the investigator.
Comment:	Antigen size: 389 AA
Restrictions:	For Research Use only

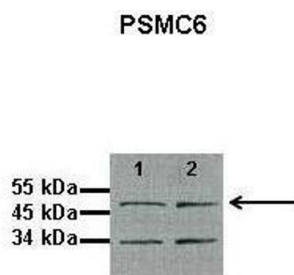
Handling

Format:	Liquid
Concentration:	Lot specific

Handling

Buffer:	Liquid. Purified antibody supplied in 1x PBS buffer with 0.09 % (w/v) sodium azide and 2 % sucrose.
Preservative:	Sodium azide
Precaution of Use:	This product contains Sodium azide: a POISONOUS AND HAZARDOUS SUBSTANCE which should be handled by trained staff only.
Handling Advice:	Avoid repeated freeze-thaw cycles.
Storage:	-20 °C
Storage Comment:	For short term use, store at 2-8°C up to 1 week. For long term storage, store at -20°C in small aliquots to prevent freeze-thaw cycles.

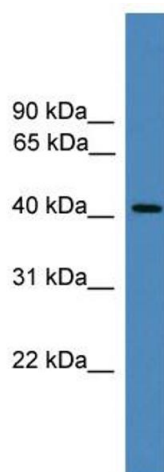
Images



Western Blotting

Image 1. Lanes: 1: 10ug proteasome fraction from C57B1/6J mouse brain, 2: 10ug proteasome fraction from BLAB/C mouse brain Primary Antibody Dilution: 1:500 Secondary Antibody: Anti-rabbit HRP Secondary Antibody Dilution: 1:5000 Gene Name: PSMC6 Submitted by: Dr. Scott Wilson, University of Alabama at Birmingham

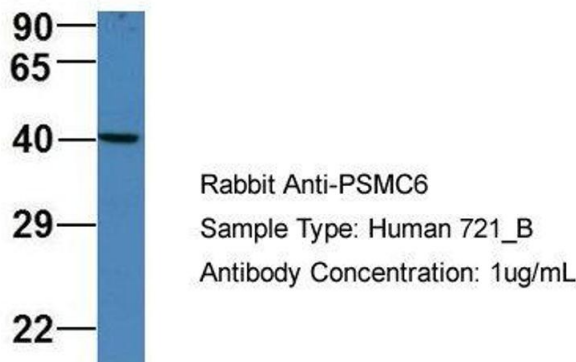
See Immunoblot 2 Data and customer Feedback for more Information



Western Blotting

Image 2. WB Suggested Anti-PSMC6 Antibody Titration: 0.2-1 ug/ml ELISA Titer: 1:312500 Positive Control: Jurkat cell lysate

PSMC6



Western Blotting

Image 3. Host: Rabbit Target Name: PSMC6 Sample Type: Human 721_B Antibody Dilution: 1.0ug/ml PSMC6 is supported by BioGPS gene expression data to be expressed in 721_B

Please check the [product details page](#) for more images. Overall 4 images are available for ABIN2788038.