

Datasheet for ABIN2788040
anti-ADRM1 antibody (C-Term)



[Go to Product page](#)

3 Images

Overview

Quantity:	100 µL
Target:	ADRM1 (Adrm1)
Binding Specificity:	C-Term
Reactivity:	Human, Mouse, Rat, Guinea Pig
Host:	Rabbit
Clonality:	Polyclonal
Conjugate:	This ADRM1 antibody is un-conjugated
Application:	Western Blotting (WB)

Product Details

Immunogen:	The immunogen is a synthetic peptide directed towards the C terminal region of human ADRM1
Sequence:	QLGPLMCQFG LPAAEAVEAAN KGDVEAFAKA MQNNAKPEQK EGDTKDKKDE
Predicted Reactivity:	Guinea Pig: 86%, Human: 100%, Mouse: 79%, Rat: 86%
Characteristics:	This is a rabbit polyclonal antibody against ADRM1. It was validated on Western Blot.
Purification:	Affinity Purified

Target Details

Target:	ADRM1 (Adrm1)
Alternative Name:	ADRM1 (Adrm1 Products)
Background:	The protein encoded by this gene is an integral plasma membrane protein which promotes cell

Target Details

adhesion. The encoded protein is thought to undergo O-linked glycosylation. Expression of this gene has been shown to be induced by gamma interferon in some cancer cells. Two transcript variants encoding the same protein have been found for this gene.

Alias Symbols: ARM1, GP110, MGC29536, Rpn13

Protein Interaction Partner: UCHL5, HUWE1, UBC, PSMD14, SHFM1, PSME1, PSMD4, PSMA1, PPP1R2P4, TXNL1, PSMC1, RPS21, RPS8, PSMD13, PSMD11, PSMD8, PSMD7, PSMD3, PSMD2, PSMD1, PSMC6, PSMC5, PSMC4, PSMC3, PSMC2, PARK2, APP, UBD, UBQLN1, RAD23, DSK2, RAD23B, PSMA2, ATP6V0D2, FKBP8, RAD23A,

Protein Size: 407

Molecular Weight: 40 kDa

Gene ID: 11047

NCBI Accession: [NM_175573](#), [NP_783163](#)

UniProt: [Q16186](#)

Pathways: [Positive Regulation of Endopeptidase Activity](#)

Application Details

Application Notes: Optimal working dilutions should be determined experimentally by the investigator.

Comment: Antigen size: 407 AA

Restrictions: For Research Use only

Handling

Format: Liquid

Concentration: Lot specific

Buffer: Liquid. Purified antibody supplied in 1x PBS buffer with 0.09 % (w/v) sodium azide and 2 % sucrose.

Preservative: Sodium azide

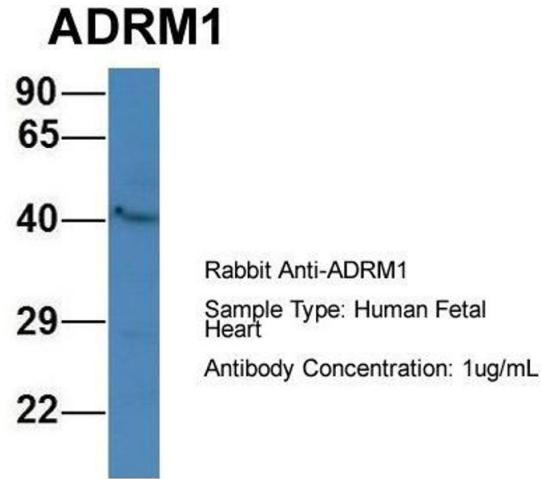
Precaution of Use: This product contains Sodium azide: a POISONOUS AND HAZARDOUS SUBSTANCE which should be handled by trained staff only.

Handling Advice: Avoid repeated freeze-thaw cycles.

Storage: -20 °C

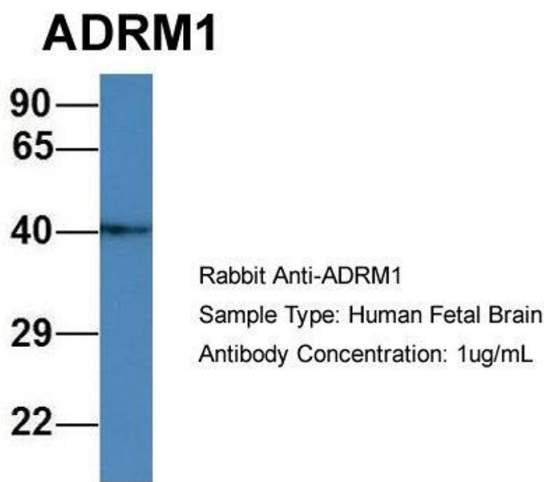
Storage Comment: For short term use, store at 2-8°C up to 1 week. For long term storage, store at -20°C in small aliquots to prevent freeze-thaw cycles.

Images



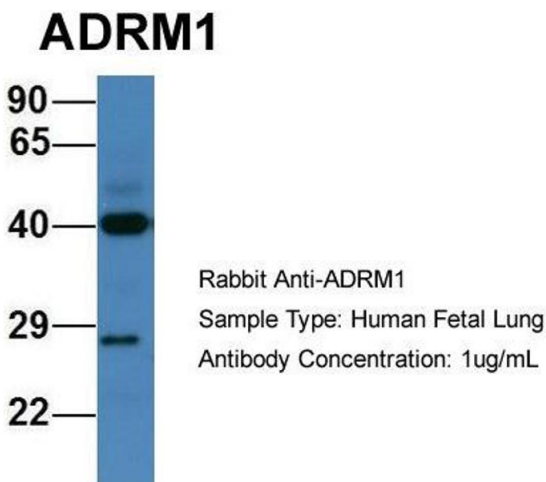
Western Blotting

Image 1. Host: Rabbit
Target Name: ADRM1
Sample Tissue: Human Fetal Heart
Antibody Dilution: 1.0 µg/mL



Western Blotting

Image 2. Host: Rabbit
Target Name: ADRM1
Sample Tissue: Human Fetal Brain
Antibody Dilution: 1.0 µg/mL



Western Blotting

Image 3. Host: Rabbit
Target Name: ADRM1
Sample Tissue: Human Fetal Lung
Antibody Dilution: 1.0 µg/mL