

Datasheet for ABIN2788044  
**anti-RWDD3 antibody (Middle Region)**[Go to Product page](#)

## 1 Image

## Overview

Quantity:	100 µL
Target:	RWDD3
Binding Specificity:	Middle Region
Reactivity:	Human, Mouse, Rat, Dog, Guinea Pig
Host:	Rabbit
Clonality:	Polyclonal
Conjugate:	This RWDD3 antibody is un-conjugated
Application:	Western Blotting (WB)

## Product Details

Sequence:	ESLLSEPMVH ELVLWIIQNL RHILSQPETG SGSEKCTFST STTMDDGLWI
Predicted Reactivity:	Dog: 86%, Guinea Pig: 86%, Human: 100%, Mouse: 79%, Rat: 86%
Characteristics:	This is a rabbit polyclonal antibody against RWDD3. It was validated on Western Blot.
Purification:	Affinity Purified

## Target Details

Target:	RWDD3
Alternative Name:	RWDD3 ( <a href="#">RWDD3 Products</a> )
Background:	RWDD3 enhances the sumoylation of a number of proteins including HIF1A, PIAS and I-kappa-B, through direct interaction with UBC9. RWDD3 has no effect on ubiquitination.

## Target Details

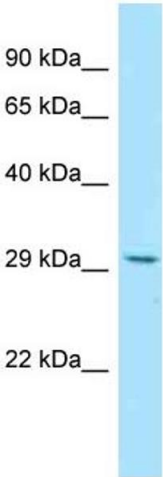
	Alias Symbols: DKFZp566K023, RSUME Protein Interaction Partner: SUMO1, UBE2I, NFKBIA, HIF1A, UBC, Protein Size: 267
Molecular Weight:	30 kDa
Gene ID:	25950
NCBI Accession:	<a href="#">NM_015485</a> , <a href="#">NP_056300</a>
UniProt:	<a href="#">Q9Y3V2</a>

## Application Details

Application Notes:	Optimal working dilutions should be determined experimentally by the investigator.
Comment:	Antigen size: 267 AA
Restrictions:	For Research Use only

## Handling

Format:	Liquid
Concentration:	Lot specific
Buffer:	Liquid. Purified antibody supplied in 1x PBS buffer with 0.09 % (w/v) sodium azide and 2 % sucrose.
Preservative:	Sodium azide
Precaution of Use:	This product contains Sodium azide: a POISONOUS AND HAZARDOUS SUBSTANCE which should be handled by trained staff only.
Handling Advice:	Avoid repeated freeze-thaw cycles.
Storage:	-20 °C
Storage Comment:	For short term use, store at 2-8°C up to 1 week. For long term storage, store at -20°C in small aliquots to prevent freeze-thaw cycles.



Western Blotting

**Image 1.** WB Suggested Anti-RWDD3 Antibody Titration:  
1.0 ug/ml Positive Control: 293T Whole Cell RWDD3 is supported by BioGPS gene expression data to be expressed in HEK293T