

Datasheet for ABIN2788048  
**anti-SHARPIN antibody (C-Term)**[Go to Product page](#)

## 2 Images

## Overview

Quantity:	100 µL
Target:	SHARPIN
Binding Specificity:	C-Term
Reactivity:	Human, Rat, Cow
Host:	Rabbit
Clonality:	Polyclonal
Conjugate:	This SHARPIN antibody is un-conjugated
Application:	Western Blotting (WB)

## Product Details

Immunogen:	The immunogen is a synthetic peptide directed towards the C terminal region of human SHARPIN
Sequence:	SAPREAPATG PSPQHPQKMD GELGRLFPPS LGLPPGPQPA ASSLP SPLQP
Predicted Reactivity:	Cow: 79%, Human: 100%, Rat: 86%
Characteristics:	This is a rabbit polyclonal antibody against SHARPIN. It was validated on Western Blot.
Purification:	Affinity Purified

## Target Details

Target:	SHARPIN
Alternative Name:	SHARPIN ( <a href="#">SHARPIN Products</a> )

## Target Details

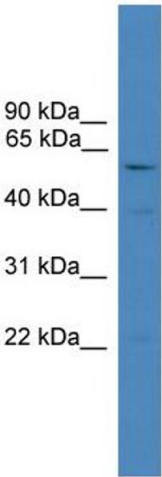
Background:	SHARPIN may have a role in normal immune development and control of inflammation. Alias Symbols: DKFZp434N1923, SIPL1 Protein Interaction Partner: UBC, PTEN, ITGAM, ITGAL, ITGAD, AURKB, RNF31, RBCK1, OTULIN, SHANK2, IKBKG, NOD2, TNFRSF1A, TXN2, TNFAIP3, TNF, ITGA5, ITGA2, ITGA1, NFKBIA, SHARPIN, SHANK1, Protein Size: 387
Molecular Weight:	40 kDa
Gene ID:	81858
NCBI Accession:	<a href="#">NM_030974</a> , <a href="#">NP_112236</a>
UniProt:	<a href="#">Q9H0F6</a>

## Application Details

Application Notes:	Optimal working dilutions should be determined experimentally by the investigator.
Comment:	Antigen size: 387 AA
Restrictions:	For Research Use only

## Handling

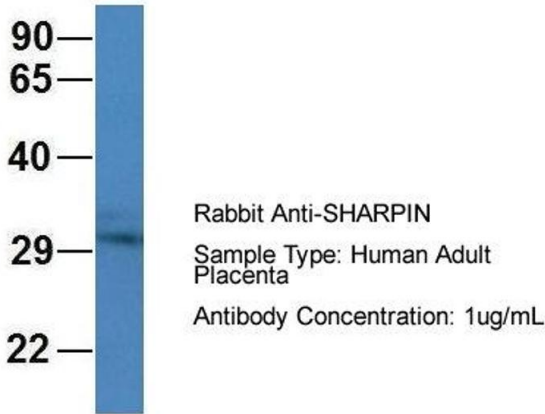
Format:	Liquid
Concentration:	Lot specific
Buffer:	Liquid. Purified antibody supplied in 1x PBS buffer with 0.09 % (w/v) sodium azide and 2 % sucrose.
Preservative:	Sodium azide
Precaution of Use:	This product contains Sodium azide: a POISONOUS AND HAZARDOUS SUBSTANCE which should be handled by trained staff only.
Handling Advice:	Avoid repeated freeze-thaw cycles.
Storage:	-20 °C
Storage Comment:	For short term use, store at 2-8°C up to 1 week. For long term storage, store at -20°C in small aliquots to prevent freeze-thaw cycles.



Western Blotting

**Image 1.** WB Suggested Anti-SHARPIN Antibody Titration:  
0.2-1 ug/ml ELISA Titer: 1:312500 Positive Control: Hela cell lysate

SHARPIN



Western Blotting

**Image 2.** Host: Rabbit Target Name: CHAD Sample Type:  
Human Adult Placenta Antibody Dilution: 1.0ug/ml