



[Go to Product page](#)

Datasheet for ABIN2788055
anti-ZER1 antibody (C-Term)

1 Image

Overview

Quantity:	100 µL
Target:	ZER1
Binding Specificity:	C-Term
Reactivity:	Human, Mouse, Rat, Horse, Cow, Dog, Guinea Pig, Rabbit
Host:	Rabbit
Clonality:	Polyclonal
Conjugate:	This ZER1 antibody is un-conjugated
Application:	Western Blotting (WB)

Product Details

Immunogen:	The immunogen is a synthetic peptide directed towards the C-terminal region of Human ZER1
Sequence:	YCPLLIKEGG MPLLRDIKM ATARQETKEM ARKVIEHCSN FKEENMDTSR
Predicted Reactivity:	Cow: 100%, Dog: 100%, Guinea Pig: 100%, Horse: 100%, Human: 100%, Mouse: 93%, Rabbit: 86%, Rat: 100%
Characteristics:	This is a rabbit polyclonal antibody against ZER1. It was validated on Western Blot.
Purification:	Affinity Purified

Target Details

Target:	ZER1
Alternative Name:	ZER1 (ZER1 Products)

Target Details

Background: ZER1 probably acts as target recruitment subunit in the E3 ubiquitin ligase complex ZER1-CUL2-Elongin BC.
Alias Symbols: C9orf60, Hzyg, RP11-545E17.4, ZYG, ZYG11BL
Protein Interaction Partner: UBC, MLH1, CUL2, TCEB2, TCEB1,
Protein Size: 766

Molecular Weight: 88 kDa

Gene ID: 10444

NCBI Accession: [NM_006336](#), [NP_006327](#)

UniProt: [Q7Z7L7](#)

Pathways: [Proton Transport](#)

Application Details

Application Notes: Optimal working dilutions should be determined experimentally by the investigator.

Comment: Antigen size: 766 AA

Restrictions: For Research Use only

Handling

Format: Liquid

Concentration: Lot specific

Buffer: Liquid. Purified antibody supplied in 1x PBS buffer with 0.09 % (w/v) sodium azide and 2 % sucrose.

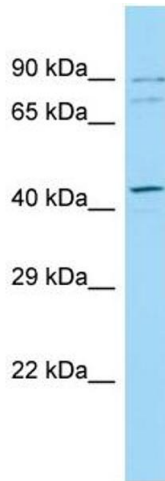
Preservative: Sodium azide

Precaution of Use: This product contains Sodium azide: a POISONOUS AND HAZARDOUS SUBSTANCE which should be handled by trained staff only.

Handling Advice: Avoid repeated freeze-thaw cycles.

Storage: -20 °C

Storage Comment: For short term use, store at 2-8°C up to 1 week. For long term storage, store at -20°C in small aliquots to prevent freeze-thaw cycles.



Western Blotting

Image 1. Host: Rabbit Target Name: ZER1 Sample Type: Fetal Kidney lysates Antibody Dilution: 1.0ug/ml