

Datasheet for ABIN2788056  
**anti-ZER1 antibody (Middle Region)**[Go to Product page](#)

## 1 Image

## Overview

Quantity:	100 µL
Target:	ZER1
Binding Specificity:	Middle Region
Reactivity:	Human, Mouse, Rat, Horse, Cow, Dog, Guinea Pig, Rabbit, Pig, Zebrafish (Danio rerio)
Host:	Rabbit
Clonality:	Polyclonal
Conjugate:	This ZER1 antibody is un-conjugated
Application:	Western Blotting (WB)

## Product Details

Immunogen:	The immunogen is a synthetic peptide directed towards the middle region of human ZER1
Sequence:	LTNSEYRSEQ SVKLRRQVIQ VVLNGMESYQ EVTVQRNCCL TLCNFSIPEE
Predicted Reactivity:	Cow: 93%, Dog: 93%, Guinea Pig: 93%, Horse: 100%, Human: 100%, Mouse: 100%, Pig: 100%, Rabbit: 86%, Rat: 100%, Zebrafish: 79%
Characteristics:	This is a rabbit polyclonal antibody against ZER1. It was validated on Western Blot.
Purification:	Affinity Purified

## Target Details

Target:	ZER1
Alternative Name:	ZER1 ( <a href="#">ZER1 Products</a> )

## Target Details

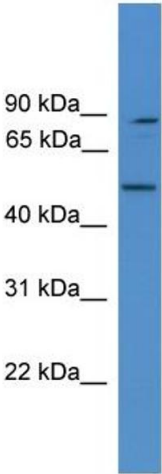
Background:	ZER1 probably acts as target recruitment subunit in the E3 ubiquitin ligase complex ZER1-CUL2-Elongin BC. Alias Symbols: C9orf60, Hzyg, RP11-545E17.4, ZYG, ZYG11BL Protein Interaction Partner: UBC, MLH1, CUL2, TCEB2, TCEB1, Protein Size: 766
Molecular Weight:	88 kDa
Gene ID:	10444
NCBI Accession:	<a href="#">NM_006336</a> , <a href="#">NP_006327</a>
UniProt:	<a href="#">Q7Z7L7</a>
Pathways:	<a href="#">Proton Transport</a>

## Application Details

Application Notes:	Optimal working dilutions should be determined experimentally by the investigator.
Comment:	Antigen size: 766 AA
Restrictions:	For Research Use only

## Handling

Format:	Liquid
Concentration:	Lot specific
Buffer:	Liquid. Purified antibody supplied in 1x PBS buffer with 0.09 % (w/v) sodium azide and 2 % sucrose.
Preservative:	Sodium azide
Precaution of Use:	This product contains Sodium azide: a POISONOUS AND HAZARDOUS SUBSTANCE which should be handled by trained staff only.
Handling Advice:	Avoid repeated freeze-thaw cycles.
Storage:	-20 °C
Storage Comment:	For short term use, store at 2-8°C up to 1 week. For long term storage, store at -20°C in small aliquots to prevent freeze-thaw cycles.



Western Blotting

**Image 1.** WB Suggested Anti-ZER1 Antibody Titration: 1.0 ug/ml Positive Control: RPMI-8226 Whole Cell. ZER1 is strongly supported by BioGPS gene expression data to be expressed in RPMI-8226