

Datasheet for ABIN2788057  
**anti-FBXL12 antibody (C-Term)**



[Go to Product page](#)

1 Image

## Overview

Quantity:	100 µL
Target:	FBXL12
Binding Specificity:	C-Term
Reactivity:	Human, Mouse, Rat, Dog, Pig, Horse, Guinea Pig, Rabbit, Cow
Host:	Rabbit
Clonality:	Polyclonal
Conjugate:	This FBXL12 antibody is un-conjugated
Application:	Western Blotting (WB)

## Product Details

Immunogen:	The immunogen is a synthetic peptide directed towards the C terminal region of human FBXL12
Sequence:	PTEILSSCLT MPKLRVLELQ GLGWEGQEAE KILCKGLPHC MVIVRACPKE
Predicted Reactivity:	Cow: 93%, Dog: 93%, Guinea Pig: 86%, Horse: 93%, Human: 100%, Mouse: 100%, Pig: 100%, Rabbit: 86%, Rat: 93%
Characteristics:	This is a rabbit polyclonal antibody against FBXL12. It was validated on Western Blot.
Purification:	Affinity Purified

## Target Details

Target:	FBXL12
---------	--------

## Target Details

Alternative Name:	FBXL12 ( <a href="#">FBXL12 Products</a> )
Background:	<p>Members of the F-box protein family, such as FBXL12, are characterized by an approximately 40-amino acid F-box motif. SCF complexes, formed by SKP1 (MIM 601434), cullin (see CUL1, MIM 603134), and F-box proteins, act as protein-ubiquitin ligases. F-box proteins interact with SKP1 through the F box, and they interact with ubiquitination targets through other protein interaction domains (Jin et al., 2004 [PubMed 15520277]).</p> <p>Alias Symbols: FLJ20188, Fbl12</p> <p>Protein Interaction Partner: LNX1, DOCK8, PRAME, STYX, HSP90AA1, CUL1, SKP1, RNF32, ECSIT, MAST1, CDC37, PSEN2, PSEN1, APOE, A2M, UBC, COPS6, RBX1, CDKN1C, JUN, FXYD3, SMAD1, TGFBR1,</p> <p>Protein Size: 326</p>
Molecular Weight:	37 kDa
Gene ID:	54850
NCBI Accession:	<a href="#">NM_017703</a> , <a href="#">NP_060173</a>
UniProt:	<a href="#">Q9NXK8</a>
Pathways:	<a href="#">SARS-CoV-2 Protein Interactome</a>

## Application Details

Application Notes:	Optimal working dilutions should be determined experimentally by the investigator.
Comment:	Antigen size: 326 AA
Restrictions:	For Research Use only

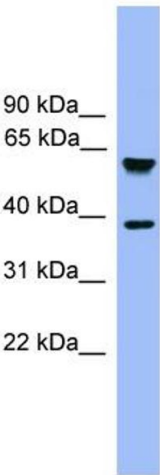
## Handling

Format:	Liquid
Concentration:	Lot specific
Buffer:	Liquid. Purified antibody supplied in 1x PBS buffer with 0.09 % (w/v) sodium azide and 2 % sucrose.
Preservative:	Sodium azide
Precaution of Use:	This product contains Sodium azide: a POISONOUS AND HAZARDOUS SUBSTANCE which should be handled by trained staff only.

Handling

Handling Advice:	Avoid repeated freeze-thaw cycles.
Storage:	-20 °C
Storage Comment:	For short term use, store at 2-8°C up to 1 week. For long term storage, store at -20°C in small aliquots to prevent freeze-thaw cycles.

Images



**Western Blotting**

**Image 1.** WB Suggested Anti-FBXL12 Antibody Titration: 0.2-1 ug/ml ELISA Titer: 1:1562500 Positive Control: Human heart