

Datasheet for ABIN2788060
anti-RPS27A antibody (Middle Region)[Go to Product page](#)

2 Images

Overview

Quantity:	100 µL
Target:	RPS27A
Binding Specificity:	Middle Region
Reactivity:	Human, Mouse, Rat, Cow, Horse, Rabbit, Sheep, Guinea Pig, Dog, Saccharomyces cerevisiae, Zebrafish (Danio rerio)
Host:	Rabbit
Clonality:	Polyclonal
Conjugate:	This RPS27A antibody is un-conjugated
Application:	Western Blotting (WB)

Product Details

Immunogen:	The immunogen is a synthetic peptide directed towards the middle region of human RPS27A
Sequence:	LRGGAKKRKK KSYTTPKKNK HKRKKVKLAV LKYYKVDENG KISRLRRECP
Predicted Reactivity:	Cow: 100%, Dog: 100%, Guinea Pig: 100%, Horse: 100%, Human: 100%, Mouse: 100%, Rabbit: 100%, Rat: 100%, Sheep: 100%, Yeast: 79%, Zebrafish: 93%
Characteristics:	This is a rabbit polyclonal antibody against RPS27A. It was validated on Western Blot.
Purification:	Affinity Purified

Target Details

Target:	RPS27A
---------	--------

Target Details

Alternative Name:	RPS27A (RPS27A Products)
Background:	<p>Ubiquitin, a highly conserved protein that has a major role in targeting cellular proteins for degradation by the 26S proteasome, is synthesized as a precursor protein consisting of either polyubiquitin chains or a single ubiquitin fused to an unrelated protein. This gene encodes a fusion protein consisting of ubiquitin at the N terminus and ribosomal protein S27a at the C terminus. When expressed in yeast, the protein is post-translationally processed, generating free ubiquitin monomer and ribosomal protein S27a. Ribosomal protein S27a is a component of the 40S subunit of the ribosome and belongs to the S27AE family of ribosomal proteins. It contains C4-type zinc finger domains and is located in the cytoplasm. Pseudogenes derived from this gene are present in the genome. As with ribosomal protein S27a, ribosomal protein L40 is also synthesized as a fusion protein with ubiquitin, similarly, ribosomal protein S30 is synthesized as a fusion protein with the ubiquitin-like protein fubi. Multiple alternatively spliced transcript variants that encode the same proteins have been identified.</p> <p>Alias Symbols: CEP80, UBA80, UBCEP1, UBCEP80, UBC, S27A</p> <p>Protein Interaction Partner: CALCOCO2, DAZAP2, UBC, MDM2, TRIM25, EED, TP53, RNF11, rev, TUBA4A, PARK2, CDK2, PAN2, ZNF512B, SMAD2, ITGA4, FN1, CDK11B, UBL4A, VCAM1, RPL21, RPL19, RPL18A, RPL18, RPL17, RPL15, RPL11, RPL9, RPL7A, RPL6, RPL5, RPL4, RPL37A, RPL31, RPL24, RPL23A, RPL22,</p> <p>Protein Size: 156</p>
Molecular Weight:	18 kDa
Gene ID:	6233
NCBI Accession:	NM_002954 , NP_002945
UniProt:	P62979
Pathways:	Fc-epsilon Receptor Signaling Pathway , EGFR Signaling Pathway , Neurotrophin Signaling Pathway , Activation of Innate immune Response , Mitotic G1-G1/S Phases , DNA Replication , Toll-Like Receptors Cascades , Synthesis of DNA , EGFR Downregulation

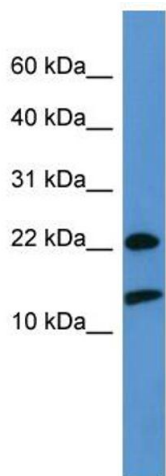
Application Details

Application Notes:	Optimal working dilutions should be determined experimentally by the investigator.
Comment:	Antigen size: 156 AA
Restrictions:	For Research Use only

Handling

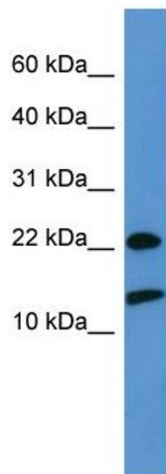
Format:	Liquid
Concentration:	Lot specific
Buffer:	Liquid. Purified antibody supplied in 1x PBS buffer with 0.09 % (w/v) sodium azide and 2 % sucrose.
Preservative:	Sodium azide
Precaution of Use:	This product contains Sodium azide: a POISONOUS AND HAZARDOUS SUBSTANCE which should be handled by trained staff only.
Handling Advice:	Avoid repeated freeze-thaw cycles.
Storage:	-20 °C
Storage Comment:	For short term use, store at 2-8°C up to 1 week. For long term storage, store at -20°C in small aliquots to prevent freeze-thaw cycles.

Images



Western Blotting

Image 1. WB Suggested Anti-RPS27A Antibody Titration:
0.2-1 ug/ml
ELISA Titer: 1:1562500
Positive Control: 293T cell lysate



Western Blotting

Image 2. WB Suggested Anti-RPS27A
Antibody Titration: 0.2-1 µg/mL ELISA Titer: 1:1562500
Positive Control: 93T cell lysate
RPS27A is supported by BioGPS gene expression data to be expressed in HEK293T