

Datasheet for ABIN2788066  
**anti-PEN2 antibody (C-Term)**[Go to Product page](#)

## 2 Images

## Overview

Quantity:	100 µL
Target:	PEN2 (PSENEN)
Binding Specificity:	C-Term
Reactivity:	Human, Mouse, Rat, Dog, Horse, Cow, Guinea Pig, Rabbit, Zebrafish (Danio rerio)
Host:	Rabbit
Clonality:	Polyclonal
Conjugate:	This PEN2 antibody is un-conjugated
Application:	Western Blotting (WB)

## Product Details

Immunogen:	The immunogen is a synthetic peptide directed towards the C terminal region of human PSENEN
Sequence:	SQIKGYVWRS AVGFLFWVIV LTSWITIFI YRPRWGALGD YLSFTIPLGT
Predicted Reactivity:	Cow: 100%, Dog: 100%, Guinea Pig: 100%, Horse: 100%, Human: 100%, Mouse: 100%, Rabbit: 100%, Rat: 100%, Zebrafish: 100%
Characteristics:	This is a rabbit polyclonal antibody against PSENEN. It was validated on Western Blot.
Purification:	Affinity Purified

## Target Details

Target:	PEN2 (PSENEN)
---------	---------------

## Target Details

Alternative Name:	PSENEN ( <a href="#">PSENEN Products</a> )
Background:	<p>Presenilins, which are components of the gamma-secretase protein complex, are required for intramembranous processing of some type I transmembrane proteins, such as the Notch proteins and the beta-amyloid precursor protein. Signaling by Notch receptors mediates a wide range of developmental cell fates. Processing of the beta-amyloid precursor protein generates neurotoxic amyloid beta peptides, the major component of senile plaques associated with Alzheimer's disease. This gene encodes a protein that is required for Notch pathway signaling, and for the activity and accumulation of gamma-secretase.</p> <p>Alias Symbols: MDS033, MSTP064, PEN-2, PEN2</p> <p>Protein Interaction Partner: APH1A, ERLIN2, THBD, APH1B, PSEN2, PSEN1, TMED10, NCSTN, Protein Size: 101</p>
Molecular Weight:	12 kDa
Gene ID:	55851
NCBI Accession:	<a href="#">NM_172341</a> , <a href="#">NP_758844</a>
UniProt:	<a href="#">Q9NZ42</a>
Pathways:	<a href="#">Notch Signaling</a> , <a href="#">Neurotrophin Signaling Pathway</a>

## Application Details

Application Notes:	Optimal working dilutions should be determined experimentally by the investigator.
Comment:	Antigen size: 101 AA
Restrictions:	For Research Use only

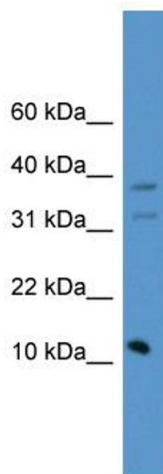
## Handling

Format:	Liquid
Concentration:	Lot specific
Buffer:	Liquid. Purified antibody supplied in 1x PBS buffer with 0.09 % (w/v) sodium azide and 2 % sucrose.
Preservative:	Sodium azide
Precaution of Use:	This product contains Sodium azide: a POISONOUS AND HAZARDOUS SUBSTANCE which should be handled by trained staff only.

## Handling

Handling Advice:	Avoid repeated freeze-thaw cycles.
Storage:	-20 °C
Storage Comment:	For short term use, store at 2-8°C up to 1 week. For long term storage, store at -20°C in small aliquots to prevent freeze-thaw cycles.

## Images



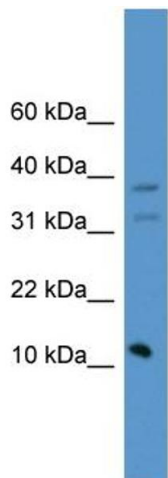
### Western Blotting

#### Image 1. WB Suggested Anti-PSENEN Antibody Titration:

0.2-1 ug/ml

**ELISA Titer:** 1:1562500

**Positive Control:** Human Muscle



Rabbit Anti-PSENEN Antibody  
Catalog Number: ARP59439  
Lot Number: QC30406  
Lane: Fetal muscle Lysate

Antibody Titration: 1.0µg/ml  
Gel Concentration: 10-20%

### Western Blotting

#### Image 2. WB Suggested Anti-PSENEN

Antibody Titration: 0.2-1 µg/mL ELISA Titer: 1:1562500

Positive Control: Human Muscle