

Datasheet for ABIN2788074
anti-CPNE6 antibody (Middle Region)[Go to Product page](#)

2 Images

Overview

| | |
|----------------------|--|
| Quantity: | 100 µL |
| Target: | CPNE6 |
| Binding Specificity: | Middle Region |
| Reactivity: | Human, Mouse, Rat, Cow, Guinea Pig, Horse, Rabbit, Dog |
| Host: | Rabbit |
| Clonality: | Polyclonal |
| Conjugate: | This CPNE6 antibody is un-conjugated |
| Application: | Western Blotting (WB) |

Product Details

| | |
|-----------------------|---|
| Immunogen: | The immunogen is a synthetic peptide directed towards the middle region of human CPNE6 |
| Sequence: | LPQIQLYGPT NVAPIINRVA EPAQREQSTG QATKYSVLLV LTDGVVSDMA |
| Predicted Reactivity: | Cow: 93%, Dog: 93%, Guinea Pig: 93%, Horse: 93%, Human: 100%, Mouse: 100%, Rabbit: 92%, Rat: 100% |
| Characteristics: | This is a rabbit polyclonal antibody against CPNE6. It was validated on Western Blot. |
| Purification: | Affinity Purified |

Target Details

| | |
|-------------------|--|
| Target: | CPNE6 |
| Alternative Name: | CPNE6 (CPNE6 Products) |

Target Details

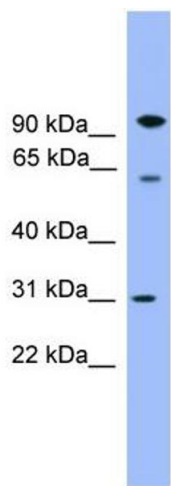
| | |
|-------------------|---|
| Background: | <p>This gene encodes a brain-specific member of the copine family, which is composed of calcium-dependent membrane-binding proteins. The gene product contains two N-terminal C2 domains, and one von Willebrand factor A domain. It may have a role in synaptic plasticity.</p> <p>Alias Symbols: N-COPINE</p> <p>Protein Interaction Partner: MEOX2, LAMTOR3, TTR, TK1, SMN1, MAPK11, PIN1, GRB7, CDKN1A, ANXA7, OS9, AK5,</p> <p>Protein Size: 557</p> |
| Molecular Weight: | 62 kDa |
| Gene ID: | 9362 |
| NCBI Accession: | NM_006032 , NP_006023 |
| UniProt: | O95741 |

Application Details

| | |
|--------------------|--|
| Application Notes: | Optimal working dilutions should be determined experimentally by the investigator. |
| Comment: | Antigen size: 557 AA |
| Restrictions: | For Research Use only |

Handling

| | |
|--------------------|---|
| Format: | Liquid |
| Concentration: | Lot specific |
| Buffer: | Liquid. Purified antibody supplied in 1x PBS buffer with 0.09 % (w/v) sodium azide and 2 % sucrose. |
| Preservative: | Sodium azide |
| Precaution of Use: | This product contains Sodium azide: a POISONOUS AND HAZARDOUS SUBSTANCE which should be handled by trained staff only. |
| Handling Advice: | Avoid repeated freeze-thaw cycles. |
| Storage: | -20 °C |
| Storage Comment: | For short term use, store at 2-8°C up to 1 week. For long term storage, store at -20°C in small aliquots to prevent freeze-thaw cycles. |

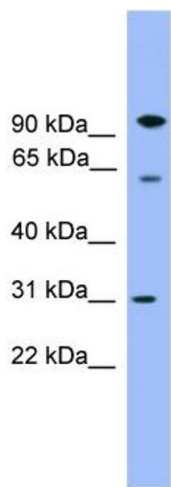


Western Blotting

Image 1. WB Suggested Anti-CPNE6 Antibody Titration:
0.2-1 ug/ml

ELISA Titer: 1:1562500

Positive Control: Human brain



Rabbit Anti-CPNE6 Antibody
Catalog Number: ARP59453
Lot Number: QC30416
Lane: Fetal Brain Lysate

Antibody Titration: 1.0µg/ml
Gel Concentration: 12%

Western Blotting

Image 2. WB Suggested Anti-CPNE6
Antibody Titration: 0.2-1 µg/mL ELISA Titer: 1:1562500
Positive Control: Human brain