

Datasheet for ABIN2788075
anti-CLTA antibody (C-Term)[Go to Product page](#)

2 Images

Overview

Quantity:	100 µL
Target:	CLTA
Binding Specificity:	C-Term
Reactivity:	Human, Mouse, Rat, Cow, Dog, Guinea Pig, Horse, Rabbit, Zebrafish (Danio rerio)
Host:	Rabbit
Clonality:	Polyclonal
Conjugate:	This CLTA antibody is un-conjugated
Application:	Western Blotting (WB)

Product Details

Immunogen:	The immunogen is a synthetic peptide directed towards the C terminal region of human CLTA
Sequence:	KELEEYARQ DEQLQKTKAN NRAAEEAFVN DIDESSPGTE WERVARLCDF
Predicted Reactivity:	Cow: 100%, Dog: 100%, Guinea Pig: 100%, Horse: 100%, Human: 100%, Mouse: 100%, Rabbit: 100%, Rat: 100%, Zebrafish: 75%
Characteristics:	This is a rabbit polyclonal antibody against CLTA. It was validated on Western Blot.
Purification:	Affinity Purified

Target Details

Target:	CLTA
Alternative Name:	CLTA (CLTA Products)

Target Details

Background:	<p>Clathrin is a large, soluble protein composed of heavy and light chains. It functions as the main structural component of the lattice-type cytoplasmic face of coated pits and vesicles which entrap specific macromolecules during receptor-mediated endocytosis. This gene encodes one of two clathrin light chain proteins which are believed to function as regulatory elements. Alternative splicing results in multiple transcript variants. Related pseudogenes have been identified on chromosomes 8 and 12.</p> <p>Alias Symbols: LCA</p> <p>Protein Interaction Partner: TP53, UBC, EGFR, PAN2, MYBL2, VCAM1, RGS2, ITGA4, FN1, CFTR, VCP, MAD2L2, SYNJ1, COPS5, CUL3, ARRB2, ARRB1, MAP1LC3B, TNK2, HSPA8, MAP1LC3A, STAMBP, HIP1R, HIP1, CLTC,</p> <p>Protein Size: 218</p>
Molecular Weight:	24 kDa
Gene ID:	1211
NCBI Accession:	NM_001833 , NP_001824
UniProt:	P09496
Pathways:	EGFR Signaling Pathway , Neurotrophin Signaling Pathway , EGFR Downregulation

Application Details

Application Notes:	Optimal working dilutions should be determined experimentally by the investigator.
Comment:	Antigen size: 218 AA
Restrictions:	For Research Use only

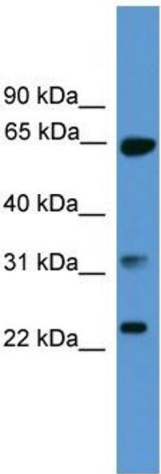
Handling

Format:	Liquid
Concentration:	Lot specific
Buffer:	Liquid. Purified antibody supplied in 1x PBS buffer with 0.09 % (w/v) sodium azide and 2 % sucrose.
Preservative:	Sodium azide
Precaution of Use:	This product contains Sodium azide: a POISONOUS AND HAZARDOUS SUBSTANCE which should be handled by trained staff only.
Handling Advice:	Avoid repeated freeze-thaw cycles.

Handling

Storage:	-20 °C
Storage Comment:	For short term use, store at 2-8°C up to 1 week. For long term storage, store at -20°C in small aliquots to prevent freeze-thaw cycles.

Images

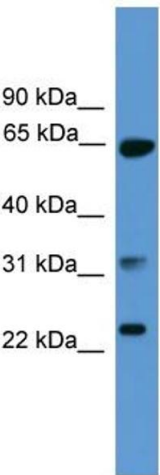


Western Blotting

Image 1. WB Suggested Anti-CLTA Antibody Titration: 0.2-1 ug/ml

ELISA Titer: 1:1562500

Positive Control: Human brain



Rabbit Anti-CLTA Antibody
Catalog Number: ARP59458
Lot Number: QC30421
Lane: Fetal Brain Lysate

Antibody Titration: 1.0µg/ml
Gel Concentration: 12%

Western Blotting

Image 2. WB Suggested Anti-CLTA

Antibody Titration: 0.2-1 µg/mL ELISA Titer: 1:1562500

Positive Control: Human brain