

Datasheet for ABIN2788077

anti-SCAMP1 antibody (Middle Region)[Go to Product page](#)

2 Images

Overview

Quantity:	100 µL
Target:	SCAMP1
Binding Specificity:	Middle Region
Reactivity:	Human, Rat, Mouse, Cow, Horse, Guinea Pig, Dog, Rabbit
Host:	Rabbit
Clonality:	Polyclonal
Conjugate:	This SCAMP1 antibody is un-conjugated
Application:	Western Blotting (WB)

Product Details

Immunogen:	The immunogen is a synthetic peptide directed towards the middle region of human SCAMP1
Sequence:	LDRREREMQN LSQHGRKNNW PPLPSNFPVG PCFYQDFSVD IPVEFQKTVK
Predicted Reactivity:	Cow: 100%, Dog: 100%, Guinea Pig: 100%, Horse: 100%, Human: 100%, Mouse: 100%, Rabbit: 100%, Rat: 100%
Characteristics:	This is a rabbit polyclonal antibody against SCAMP1. It was validated on Western Blot.
Purification:	Affinity Purified

Target Details

Target:	SCAMP1
Alternative Name:	SCAMP1 (SCAMP1 Products)

Target Details

Background:	<p>This gene product belongs to the SCAMP family of proteins which are secretory carrier membrane proteins. They function as carriers to the cell surface in post-golgi recycling pathways. Different family members are highly related products of distinct genes, and are usually expressed together. These findings suggest that the SCAMPs may function at the same site during vesicular transport rather than in separate pathways.</p> <p>Alias Symbols: SCAMP, SCAMP37</p> <p>Protein Interaction Partner: KRTAP13-1, ZMIZ2, FAM208B, UBC, UBE3A, TP53, ELAVL1, SYNRG, SCAMP2, SCAMP1, SNAP23, ITSN1, SLC9A7, EGFR, SNAP25, EPS15,</p> <p>Protein Size: 338</p>
Molecular Weight:	38 kDa
Gene ID:	9522
NCBI Accession:	NM_004866 , NP_004857
UniProt:	P56603

Application Details

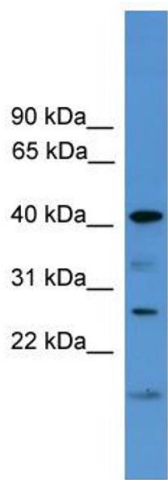
Application Notes:	Optimal working dilutions should be determined experimentally by the investigator.
Comment:	Antigen size: 338 AA
Restrictions:	For Research Use only

Handling

Format:	Liquid
Concentration:	Lot specific
Buffer:	Liquid. Purified antibody supplied in 1x PBS buffer with 0.09 % (w/v) sodium azide and 2 % sucrose.
Preservative:	Sodium azide
Precaution of Use:	This product contains Sodium azide: a POISONOUS AND HAZARDOUS SUBSTANCE which should be handled by trained staff only.
Handling Advice:	Avoid repeated freeze-thaw cycles.
Storage:	-20 °C
Storage Comment:	For short term use, store at 2-8°C up to 1 week. For long term storage, store at -20°C in small

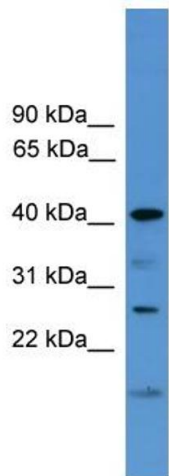
aliquots to prevent freeze-thaw cycles.

Images



Western Blotting

Image 1. WB Suggested Anti-SCAMP1 Antibody Titration:
0.2-1 ug/ml
ELISA Titer: 1:312500
Positive Control: Human Placenta



Rabbit Anti-SCAMP1 Antibody
Catalog Number: ARP59465
Lot Number: QC30427
Lane: Placenta Lysate

Antibody Titration: 1.0µg/ml
Gel Concentration: 12%

Western Blotting

Image 2. WB Suggested Anti-SCAMP1
Antibody Titration: 0.2-1 µg/mL ELISA Titer: 1::12500
Positive Control: Human Placenta