

Datasheet for ABIN2788078
anti-SCAMP1 antibody (N-Term)[Go to Product page](#)

2 Images

Overview

Quantity:	100 µL
Target:	SCAMP1
Binding Specificity:	N-Term
Reactivity:	Human, Rat, Mouse, Cow, Horse, Guinea Pig, Dog, Rabbit, Zebrafish (Danio rerio)
Host:	Rabbit
Clonality:	Polyclonal
Conjugate:	This SCAMP1 antibody is un-conjugated
Application:	Western Blotting (WB)

Product Details

Sequence:	GSVKMPNVPN TQPAIMKPTE EHPAYTQITK EHALAQAE LL KRQEELERKA
Predicted Reactivity:	Cow: 100%, Dog: 100%, Guinea Pig: 100%, Horse: 100%, Human: 100%, Mouse: 100%, Rabbit: 100%, Rat: 100%, Zebrafish: 93%
Characteristics:	This is a rabbit polyclonal antibody against Scamp1. It was validated on Western Blot.
Purification:	Affinity Purified

Target Details

Target:	SCAMP1
Alternative Name:	Scamp1 (SCAMP1 Products)
Background:	Scamp1 functions in post-Golgi recycling pathways. It acts as a recycling carrier to the cell

Target Details

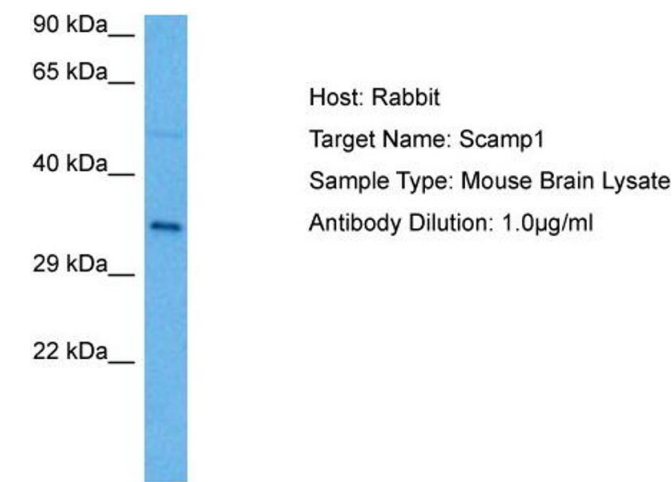
	surface. Alias Symbols: 4930505M11Rik, AI415563, AW122395 Protein Interaction Partner: Syp, Protein Size: 338
Molecular Weight:	38 kDa
Gene ID:	107767
NCBI Accession:	NM_029153 , NP_083429
UniProt:	Q8K021

Application Details

Application Notes:	Optimal working dilutions should be determined experimentally by the investigator.
Comment:	Antigen size: 338 AA
Restrictions:	For Research Use only

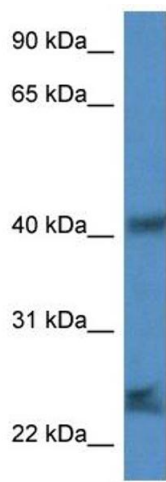
Handling

Format:	Liquid
Concentration:	Lot specific
Buffer:	Liquid. Purified antibody supplied in 1x PBS buffer with 0.09 % (w/v) sodium azide and 2 % sucrose.
Preservative:	Sodium azide
Precaution of Use:	This product contains Sodium azide: a POISONOUS AND HAZARDOUS SUBSTANCE which should be handled by trained staff only.
Handling Advice:	Avoid repeated freeze-thaw cycles.
Storage:	-20 °C
Storage Comment:	For short term use, store at 2-8°C up to 1 week. For long term storage, store at -20°C in small aliquots to prevent freeze-thaw cycles.



Western Blotting

Image 1. Host: Rabbit Target Name: SCAMP1 Sample Tissue: Mouse Brain Antibody Dilution: 1 ug/ml



Western Blotting

Image 2. WB Suggested Anti-Scamp1 Antibody Titration: 1.0 ug/ml Positive Control: Mouse Spleen