

Datasheet for ABIN2788083
anti-SYT11 antibody (N-Term)[Go to Product page](#)

2 Images

Overview

Quantity:	100 µL
Target:	SYT11
Binding Specificity:	N-Term
Reactivity:	Human, Mouse, Rat, Guinea Pig, Cow, Horse, Pig, Rabbit, Dog
Host:	Rabbit
Clonality:	Polyclonal
Conjugate:	This SYT11 antibody is un-conjugated
Application:	Western Blotting (WB)

Product Details

Immunogen:	The immunogen is a synthetic peptide directed towards the N terminal region of human SYT11
Sequence:	PPYKFIHMLK GISIYPETLS NKKKIIVRR DKDGPGREGG RRNLLVDAAE
Predicted Reactivity:	Cow: 100%, Dog: 93%, Guinea Pig: 93%, Horse: 100%, Human: 100%, Mouse: 86%, Pig: 100%, Rabbit: 100%, Rat: 100%
Characteristics:	This is a rabbit polyclonal antibody against SYT11. It was validated on Western Blot.
Purification:	Affinity Purified

Target Details

Target:	SYT11
Alternative Name:	SYT11 (SYT11 Products)

Target Details

Background:	<p>This gene is a member of the synaptotagmin gene family and encodes a protein similar to other family members that are known calcium sensors and mediate calcium-dependent regulation of membrane trafficking in synaptic transmission. The encoded protein is also a substrate for ubiquitin-E3-ligase parkin. The gene has previously been referred to as synaptotagmin XII but has been renamed synaptotagmin XI to be consistent with mouse and rat official nomenclature.</p> <p>Alias Symbols: DKFZp781D015, KIAA0080, MGC10881, MGC17226, SYT12, sytXI</p> <p>Protein Interaction Partner: UBC, SGTA, APPBP2, ATP13A2, SYNCRIP, PARK2,</p> <p>Protein Size: 431</p>
-------------	--

Molecular Weight:	48 kDa
-------------------	--------

Gene ID:	23208
----------	-------

NCBI Accession:	NM_152280 , NP_689493
-----------------	---

UniProt:	Q9BT88
----------	------------------------

Application Details

Application Notes:	Optimal working dilutions should be determined experimentally by the investigator.
--------------------	--

Comment:	Antigen size: 431 AA
----------	----------------------

Restrictions:	For Research Use only
---------------	-----------------------

Handling

Format:	Liquid
---------	--------

Concentration:	Lot specific
----------------	--------------

Buffer:	Liquid. Purified antibody supplied in 1x PBS buffer with 0.09 % (w/v) sodium azide and 2 % sucrose.
---------	---

Preservative:	Sodium azide
---------------	--------------

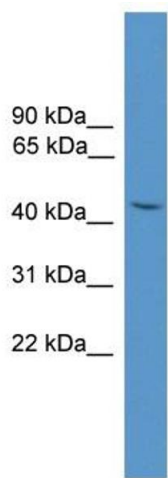
Precaution of Use:	This product contains Sodium azide: a POISONOUS AND HAZARDOUS SUBSTANCE which should be handled by trained staff only.
--------------------	--

Handling Advice:	Avoid repeated freeze-thaw cycles.
------------------	------------------------------------

Storage:	-20 °C
----------	--------

Storage Comment:	For short term use, store at 2-8°C up to 1 week. For long term storage, store at -20°C in small
------------------	---

aliquots to prevent freeze-thaw cycles.

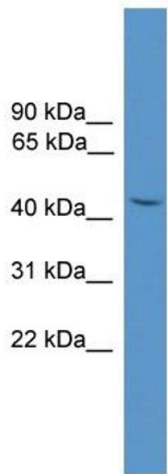


Western Blotting

Image 1. WB Suggested Anti-SYT11 Antibody Titration:
0.2-1 ug/ml

ELISA Titer: 1:312500

Positive Control: 293T cell lysate



Rabbit Anti-SYT11 Antibody
Catalog Number: ARP59474
Lot Number: QC30436
Lane: 293T Cell Lysate

Antibody Titration: 1.0µg/ml
Gel Concentration: 12%

Western Blotting

Image 2. WB Suggested Anti-SYT11
Antibody Titration: 0.2-1 µg/mL ELISA Titer: 1::12500
Positive Control:.93T cell lysate