

Datasheet for ABIN2788084

**anti-SYT16 antibody (N-Term)**

## 2 Images

[Go to Product page](#)

## Overview

Quantity:	100 µL
Target:	SYT16
Binding Specificity:	N-Term
Reactivity:	Human, Dog, Horse, Rabbit, Rat
Host:	Rabbit
Clonality:	Polyclonal
Conjugate:	This SYT16 antibody is un-conjugated
Application:	Western Blotting (WB)

## Product Details

Immunogen:	The immunogen is a synthetic peptide directed towards the N terminal region of human SYT16
Sequence:	DKLDQDLN I QIQETYFEDE EQDNDWSQED ANSLFLEVDH FSCCNSDLQD
Predicted Reactivity:	Dog: 86%, Horse: 93%, Human: 100%, Rabbit: 93%, Rat: 93%
Characteristics:	This is a rabbit polyclonal antibody against SYT16. It was validated on Western Blot.
Purification:	Affinity Purified

## Target Details

Target:	SYT16
Alternative Name:	SYT16 ( <a href="#">SYT16 Products</a> )
Background:	SYT16 may be involved in the trafficking and exocytosis of secretory vesicles in non-neuronal

## Target Details

---

tissues. Is Ca<sup>2+</sup>-independent.

Alias Symbols: CHR14SYT, SYT14L, Strep14, syt14r, yt14r

Protein Interaction Partner: NCOA5, RTN4, AGTRAP, RABAC1, ZBTB14, PHC2, SYT16, SYT14,

Protein Size: 645

---

Molecular Weight: 72 kDa

---

Gene ID: 83851

---

NCBI Accession: [NM\\_031914](#), [NP\\_114120](#)

---

UniProt: [Q17RD7](#)

---

## Application Details

---

Application Notes: Optimal working dilutions should be determined experimentally by the investigator.

---

Comment: Antigen size: 645 AA

---

Restrictions: For Research Use only

---

## Handling

---

Format: Liquid

---

Concentration: Lot specific

---

Buffer: Liquid. Purified antibody supplied in 1x PBS buffer with 0.09 % (w/v) sodium azide and 2 % sucrose.

---

Preservative: Sodium azide

---

Precaution of Use: This product contains Sodium azide: a POISONOUS AND HAZARDOUS SUBSTANCE which should be handled by trained staff only.

---

Handling Advice: Avoid repeated freeze-thaw cycles.

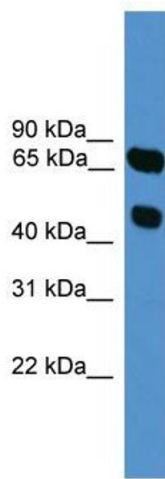
---

Storage: -20 °C

---

Storage Comment: For short term use, store at 2-8°C up to 1 week. For long term storage, store at -20°C in small aliquots to prevent freeze-thaw cycles.

---



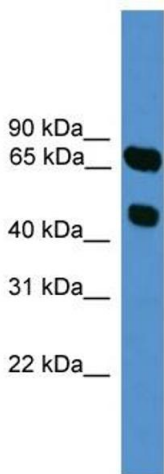
### Western Blotting

#### Image 1. WB Suggested Anti-SYT16 Antibody Titration:

0.2-1 ug/ml

**ELISA Titer:** 1:312500

**Positive Control:** HepG2 cell lysate



Rabbit Anti-SYT16 Antibody  
Catalog Number: ARP59476  
Lot Number: QC30437  
Lane: HepG2 Cell Lysate

Antibody Titration: 1.0µg/ml  
Gel Concentration: 12%

### Western Blotting

#### Image 2. WB Suggested Anti-SYT16

Antibody Titration: 0.2-1 µg/mL ELISA Titer: 1:12500

Positive Control: HepG2 cell lysate