

Datasheet for ABIN2788091
anti-ERC1 antibody (C-Term)[Go to Product page](#)

3 Images

Overview

Quantity:	100 µL
Target:	ERC1
Binding Specificity:	C-Term
Reactivity:	Human, Mouse, Rat, Dog, Cow, Rabbit, Guinea Pig, Horse, Zebrafish (Danio rerio)
Host:	Rabbit
Clonality:	Polyclonal
Conjugate:	This ERC1 antibody is un-conjugated
Application:	Western Blotting (WB)

Product Details

Immunogen:	The immunogen is a synthetic peptide directed towards the C terminal region of human ERC1
Sequence:	KLMADNYEDD HFKSSHSNQT NHPKSPDQII QPLLELDQNR SKLKLYIGHL
Predicted Reactivity:	Cow: 86%, Dog: 100%, Guinea Pig: 100%, Horse: 86%, Human: 100%, Mouse: 93%, Rabbit: 100%, Rat: 93%, Zebrafish: 86%
Characteristics:	This is a rabbit polyclonal antibody against ERC1. It was validated on Western Blot.
Purification:	Affinity Purified

Target Details

Target:	ERC1
Alternative Name:	ERC1 (ERC1 Products)

Target Details

Background:	<p>The protein encoded by this gene is a member of a family of RIM-binding proteins. RIMs are active zone proteins that regulate neurotransmitter release. This gene has been found fused to the receptor-type tyrosine kinase gene RET by gene rearrangement due to the translocation t(10;12)(q11;p13). Multiple transcript variants encoding different isoforms have been found for this gene.</p> <p>Alias Symbols: Cast2, ELKS, FLJ31750, KIAA1081, MGC12974, RAB6IP2</p> <p>Protein Interaction Partner: UBC, LATS2, CDK20, CDK19, MAPK4, STK4, PAN2, MYC, ATP6V0D1, NCBP1, APP, ERC2, WDR4, CUL3, IKBKG, NFKBIA, IKBKB, CHUK, SH3KBP1, ITSN2, RAD23A, YWHAG, MAP3K7, XIAP, KBTBD7, RAB6B, PPFIA1, RIMS1, ERC1, RAB6A, TWF2,</p> <p>Protein Size: 1116</p>
Molecular Weight:	128 kDa
Gene ID:	23085
NCBI Accession:	NM_178040 , NP_829884
UniProt:	Q8IUD2
Pathways:	SARS-CoV-2 Protein Interactome , The Global Phosphorylation Landscape of SARS-CoV-2 Infection

Application Details

Application Notes:	Optimal working dilutions should be determined experimentally by the investigator.
Comment:	Antigen size: 1116 AA
Restrictions:	For Research Use only

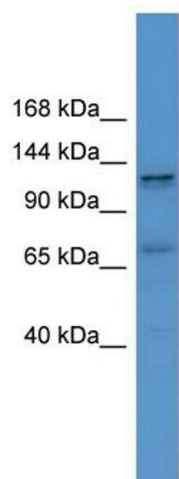
Handling

Format:	Liquid
Concentration:	Lot specific
Buffer:	Liquid. Purified antibody supplied in 1x PBS buffer with 0.09 % (w/v) sodium azide and 2 % sucrose.
Preservative:	Sodium azide
Precaution of Use:	This product contains Sodium azide: a POISONOUS AND HAZARDOUS SUBSTANCE which should be handled by trained staff only.
Handling Advice:	Avoid repeated freeze-thaw cycles.

Handling

Storage:	-20 °C
Storage Comment:	For short term use, store at 2-8°C up to 1 week. For long term storage, store at -20°C in small aliquots to prevent freeze-thaw cycles.

Images

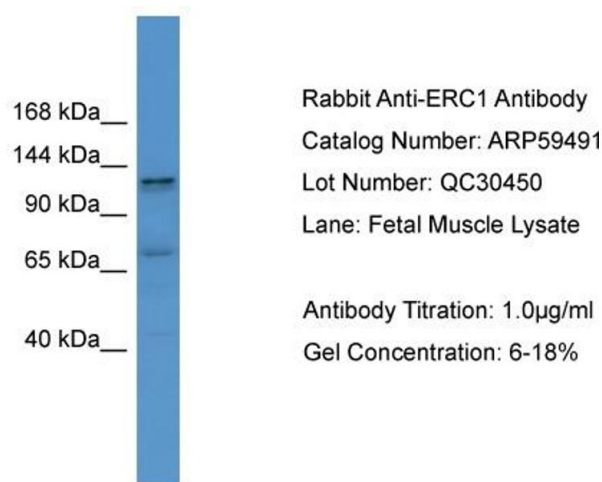


Western Blotting

Image 1. WB Suggested Anti-ERC1 Antibody Titration: 0.2-1 ug/ml

ELISA Titer: 1:62500

Positive Control: Human Muscle



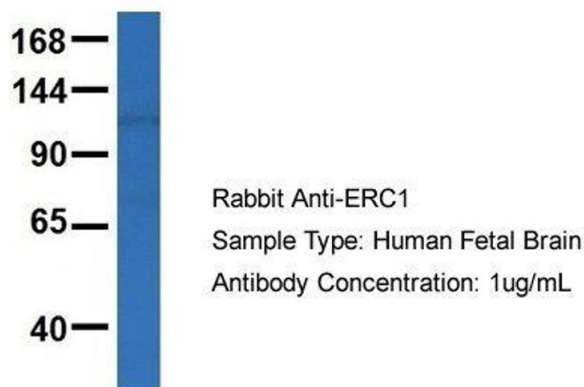
Western Blotting

Image 2. WB Suggested Anti-ERC1

Antibody Titration: 0.2-1 µg/mL ELISA Titer: 1:2500

Positive Control: Human Muscle

ERC1



Western Blotting

Image 3. Host: Rabbit

Target Name: ERC1

Sample Tissue: Human Fetal Brain

Antibody Dilution: 1.0 µg/mL