



[Go to Product page](#)

Datasheet for ABIN2788111
anti-CORT antibody (N-Term)

1 Image

Overview

Quantity:	100 µL
Target:	CORT
Binding Specificity:	N-Term
Reactivity:	Human
Host:	Rabbit
Clonality:	Polyclonal
Conjugate:	This CORT antibody is un-conjugated
Application:	Western Blotting (WB)

Product Details

Immunogen:	The immunogen is a synthetic peptide directed towards the N terminal region of human CORT
Sequence:	MPLSPGLLLL LLSGATATAA LPLEGGPTGR DSEHMQEAAAG IRKSSLLTFL
Predicted Reactivity:	Human: 100%
Characteristics:	This is a rabbit polyclonal antibody against CORT. It was validated on Western Blot.
Purification:	Affinity Purified

Target Details

Target:	CORT
Alternative Name:	CORT (CORT Products)
Background:	This gene encodes a neuropeptide that is structurally similar to somatostatin. It binds to all

Target Details

known somatostatin receptors, and shares many pharmacological and functional properties with somatostatin, including the depression of neuronal activity. However, it also has many properties distinct from somatostatin, such as induction of slow-wave sleep, apparently by antagonism of the excitatory effects of acetylcholine on the cortex, reduction of locomotor activity, and activation of cation selective currents not responsive to somatostatin. The preproprotein undergoes further processing into multiple mature products. Read-through transcripts exist between this gene and the upstream APITD1 (apoptosis-inducing, TAF9-like domain 1) gene, as represented in GenelD:100526739.

Alias Symbols: CST-14, CST-17, CST-29

Protein Interaction Partner: MRGPRX2, GHSR, SSTR5, SSTR4, SSTR3, SSTR2, SSTR1,

Protein Size: 155

Molecular Weight: 2 kDa

Gene ID: 1325

NCBI Accession: [NM_001302](#), [NP_001293](#)

UniProt: [O00230](#)

Application Details

Application Notes: Optimal working dilutions should be determined experimentally by the investigator.

Comment: Antigen size: 155 AA

Restrictions: For Research Use only

Handling

Format: Liquid

Concentration: Lot specific

Buffer: Liquid. Purified antibody supplied in 1x PBS buffer with 0.09 % (w/v) sodium azide and 2 % sucrose.

Preservative: Sodium azide

Precaution of Use: This product contains Sodium azide: a POISONOUS AND HAZARDOUS SUBSTANCE which should be handled by trained staff only.

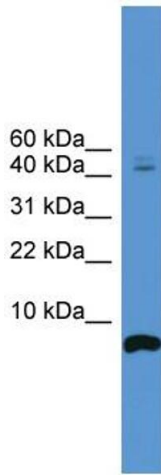
Handling Advice: Avoid repeated freeze-thaw cycles.

Storage: -20 °C

Handling

Storage Comment: For short term use, store at 2-8°C up to 1 week. For long term storage, store at -20°C in small aliquots to prevent freeze-thaw cycles.

Images



Western Blotting

Image 1. WB Suggested Anti-CORT Antibody Titration: 0.2-1 ug/ml ELISA Titer: 1:1562500 Positive Control: 721_B cell lysate CORT is supported by BioGPS gene expression data to be expressed in 721_B