

Datasheet for ABIN2788112

anti-Relaxin 3 Receptor 1 antibody (N-Term)**2** Images[Go to Product page](#)

Overview

Quantity:	100 µL
Target:	Relaxin 3 Receptor 1 (RXFP3)
Binding Specificity:	N-Term
Reactivity:	Human, Mouse, Rat, Guinea Pig, Pig, Cow, Rabbit
Host:	Rabbit
Clonality:	Polyclonal
Conjugate:	This Relaxin 3 Receptor 1 antibody is un-conjugated
Application:	Western Blotting (WB)

Product Details

Immunogen:	The immunogen is a synthetic peptide directed towards the N terminal region of human RXFP3
Sequence:	ELGLELPDGA PPGHPPGSGG AESADTEARV RILISVYVWV VCALGLAGNL
Predicted Reactivity:	Cow: 79%, Guinea Pig: 79%, Human: 100%, Mouse: 86%, Pig: 86%, Rabbit: 86%, Rat: 100%
Characteristics:	This is a rabbit polyclonal antibody against RXFP3. It was validated on Western Blot.
Purification:	Affinity Purified

Target Details

Target:	Relaxin 3 Receptor 1 (RXFP3)
Alternative Name:	RXFP3 (RXFP3 Products)
Background:	RXFP3 is the receptor for RNL3/relaxin-3. Binding of the ligand inhibit cAMP accumulation.

Target Details

Alias Symbols: GPCR135, MGC141998, MGC142000, RLN3R1, RXFPR3, SALPR
Protein Interaction Partner: APP, RLN3, RXFP3,
Protein Size: 469

Molecular Weight: 51 kDa

Gene ID: 51289

NCBI Accession: [NM_016568](#), [NP_057652](#)

UniProt: [Q9NSD7](#)

Application Details

Application Notes: Optimal working dilutions should be determined experimentally by the investigator.

Comment: Antigen size: 469 AA

Restrictions: For Research Use only

Handling

Format: Liquid

Concentration: Lot specific

Buffer: Liquid. Purified antibody supplied in 1x PBS buffer with 0.09 % (w/v) sodium azide and 2 % sucrose.

Preservative: Sodium azide

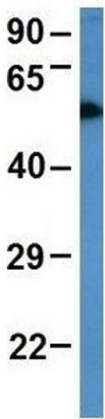
Precaution of Use: This product contains Sodium azide: a POISONOUS AND HAZARDOUS SUBSTANCE which should be handled by trained staff only.

Handling Advice: Avoid repeated freeze-thaw cycles.

Storage: -20 °C

Storage Comment: For short term use, store at 2-8°C up to 1 week. For long term storage, store at -20°C in small aliquots to prevent freeze-thaw cycles.

RXFP3

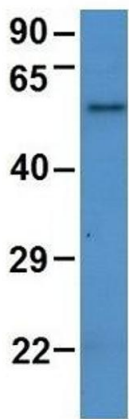


Rabbit Anti-RXFP3
Sample Type: Human Fetal Brain
Antibody Concentration: 1ug/mL

Western Blotting

Image 1. Host: Rabbit
Target Name: RXFP3
Sample Tissue: Human Fetal Brain
Antibody Dilution: 1.0 µg/mL

RXFP3



Rabbit Anti-RXFP3
Sample Type: Human Adult Placenta
Antibody Concentration: 1ug/mL

Western Blotting

Image 2. Host: Rabbit
Target Name: RXFP3
Sample Tissue: Human Adult Placenta
Antibody Dilution: 1.0 µg/mL