

Datasheet for ABIN2788120
anti-NPFFR2 antibody (Middle Region)[Go to Product page](#)

2 Images

Overview

Quantity:	100 µL
Target:	NPFFR2 (NPFF2)
Binding Specificity:	Middle Region
Reactivity:	Human, Horse, Cow
Host:	Rabbit
Clonality:	Polyclonal
Conjugate:	This NPFFR2 antibody is un-conjugated
Application:	Western Blotting (WB)

Product Details

Immunogen:	The immunogen is a synthetic peptide directed towards the middle region of human NPFFR2
Sequence:	VPHTGRKNQE QWHVVSRRKKQ KIIKMLLIVA LLFILSWLPL WTLMMMLSDYA
Predicted Reactivity:	Cow: 79%, Horse: 85%, Human: 100%
Characteristics:	This is a rabbit polyclonal antibody against NPFFR2. It was validated on Western Blot.
Purification:	Affinity Purified

Target Details

Target:	NPFFR2 (NPFF2)
Alternative Name:	NPFFR2 (NPFF2 Products)
Background:	This gene encodes a member of a subfamily of G-protein-coupled neuropeptide receptors. This

Target Details

protein is activated by the neuropeptides A-18-amide (NPAF) and F-8-amide (NPFF) and may function in pain modulation and regulation of the opioid system. Alternative splicing results in multiple transcript variants.

Alias Symbols: GPR74, HLWAR77, NPFF2, NPGPR

Protein Interaction Partner: NPFF, HCRT, NPY,

Protein Size: 420

Molecular Weight: 46 kDa

Gene ID: 10886

NCBI Accession: [NM_053036](#), [NP_444264](#)

UniProt: [A0PJM9](#)

Pathways: [cAMP Metabolic Process](#)

Application Details

Application Notes: Optimal working dilutions should be determined experimentally by the investigator.

Comment: Antigen size: 420 AA

Restrictions: For Research Use only

Handling

Format: Liquid

Concentration: Lot specific

Buffer: Liquid. Purified antibody supplied in 1x PBS buffer with 0.09 % (w/v) sodium azide and 2 % sucrose.

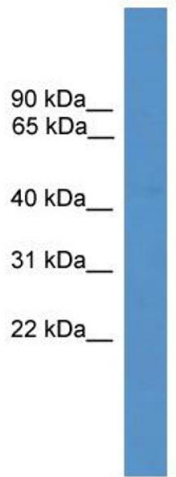
Preservative: Sodium azide

Precaution of Use: This product contains Sodium azide: a POISONOUS AND HAZARDOUS SUBSTANCE which should be handled by trained staff only.

Handling Advice: Avoid repeated freeze-thaw cycles.

Storage: -20 °C

Storage Comment: For short term use, store at 2-8°C up to 1 week. For long term storage, store at -20°C in small aliquots to prevent freeze-thaw cycles.



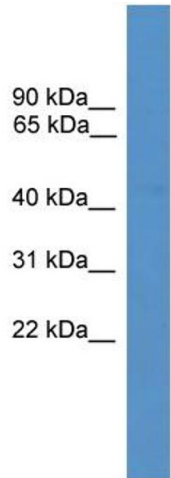
Western Blotting

Image 1. WB Suggested Anti-NPFFR2 Antibody Titration:

0.2-1 ug/ml

ELISA Titer: 1:1562500

Positive Control: Jurkat cell lysate



Rabbit Anti-NPFFR2 Antibody
Catalog Number: ARP59569
Lot Number: QC30525
Lane: Jurkat Cell Lysate

Antibody Titration: 1.0µg/ml
Gel Concentration: 12%

Western Blotting

Image 2. WB Suggested Anti-NPFFR2

Antibody Titration: 0.2-1 µg/mL ELISA Titer: 1:1562500

Positive Control: Jurkat cell lysate