

Datasheet for ABIN2788128

anti-ALDH5A1 antibody (Middle Region)**2** Images[Go to Product page](#)

Overview

Quantity:	100 µL
Target:	ALDH5A1
Binding Specificity:	Middle Region
Reactivity:	Human, Rat, Cow, Rabbit, Guinea Pig
Host:	Rabbit
Clonality:	Polyclonal
Conjugate:	This ALDH5A1 antibody is un-conjugated
Application:	Western Blotting (WB)

Product Details

Immunogen:	The immunogen is a synthetic peptide directed towards the middle region of human ALDH5A1
Sequence:	AFFLEWFSEE ARRVYGDIIH TPAKDRRALV LKQPIGVAAV ITPWNFPSAM
Predicted Reactivity:	Cow: 86%, Guinea Pig: 79%, Human: 100%, Rabbit: 79%, Rat: 86%
Characteristics:	This is a rabbit polyclonal antibody against ALDH5A1. It was validated on Western Blot.
Purification:	Affinity Purified

Target Details

Target:	ALDH5A1
Alternative Name:	ALDH5A1 (ALDH5A1 Products)
Background:	This protein belongs to the aldehyde dehydrogenase family of proteins. This gene encodes a

Target Details

mitochondrial NAD(+)-dependent succinic semialdehyde dehydrogenase. A deficiency of this enzyme, known as 4-hydroxybutyricaciduria, is a rare inborn error in the metabolism of the neurotransmitter 4-aminobutyric acid (GABA). In response to the defect, physiologic fluids from patients accumulate GHB, a compound with numerous neuromodulatory properties. Two transcript variants encoding distinct isoforms have been identified for this gene.

Alias Symbols: SSADH, SSDH

Protein Interaction Partner: MAGEA11, TOMM40, VDAC1, TIAL1, SSBP1, SOD2, EBNA-LP, ABAT,

Protein Size: 535

Molecular Weight: 57 kDa

Gene ID: 7915

NCBI Accession: [NM_001080](#), [NP_001071](#)

UniProt: [P51649](#)

Pathways: [Monocarboxylic Acid Catabolic Process](#)

Application Details

Application Notes: Optimal working dilutions should be determined experimentally by the investigator.

Comment: Antigen size: 535 AA

Restrictions: For Research Use only

Handling

Format: Liquid

Concentration: Lot specific

Buffer: Liquid. Purified antibody supplied in 1x PBS buffer with 0.09 % (w/v) sodium azide and 2 % sucrose.

Preservative: Sodium azide

Precaution of Use: This product contains Sodium azide: a POISONOUS AND HAZARDOUS SUBSTANCE which should be handled by trained staff only.

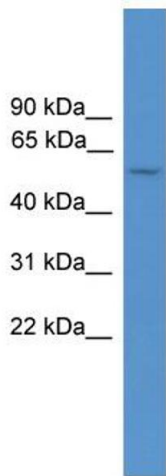
Handling Advice: Avoid repeated freeze-thaw cycles.

Storage: -20 °C

Storage Comment: For short term use, store at 2-8°C up to 1 week. For long term storage, store at -20°C in small

aliquots to prevent freeze-thaw cycles.

Images



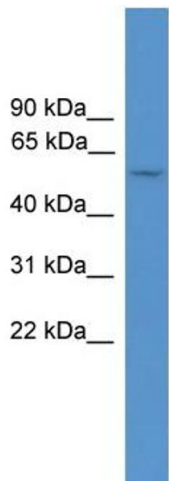
Western Blotting

Image 1. WB Suggested Anti-ALDH5A1 Antibody Titration:

0.2-1 ug/ml

ELISA Titer: 1:312500

Positive Control: Human Placenta



Rabbit Anti-ALDH5A1 Antibody
Catalog Number: ARP59587
Lot Number: QC30535
Lane: Placenta Lysate

Antibody Titration: 1.0µg/ml
Gel Concentration: 12%

Western Blotting

Image 2. WB Suggested Anti-ALDH5A1

Antibody Titration: 0.2-1 µg/mL ELISA Titer: 1:12500

Positive Control: Human Placenta