

Datasheet for ABIN2788132

## anti-Metabotropic Glutamate Receptor 3 antibody (N-Term)



[Go to Product page](#)

### 1 Image

#### Overview

Quantity:	100 µL
Target:	Metabotropic Glutamate Receptor 3 (GRM3)
Binding Specificity:	N-Term
Reactivity:	Human, Mouse, Rat, Cow, Horse, Rabbit, Dog, Guinea Pig, Zebrafish (Danio rerio)
Host:	Rabbit
Clonality:	Polyclonal
Conjugate:	This Metabotropic Glutamate Receptor 3 antibody is un-conjugated
Application:	Western Blotting (WB)

#### Product Details

Immunogen:	The immunogen is a synthetic peptide directed towards the N-terminal region of human GRM3
Sequence:	NHRNPWFRDF WEQKFQCSLQ NKRNHRRVCD KHLAIDSSNY EQESKIMFVV
Predicted Reactivity:	Cow: 100%, Dog: 92%, Guinea Pig: 86%, Horse: 93%, Human: 100%, Mouse: 100%, Rabbit: 100%, Rat: 100%, Zebrafish: 77%
Characteristics:	This is a rabbit polyclonal antibody against GRM3. It was validated on Western Blot.
Purification:	Affinity Purified

#### Target Details

Target:	Metabotropic Glutamate Receptor 3 (GRM3)
Alternative Name:	GRM3 ( <a href="#">GRM3 Products</a> )

## Target Details

Background:	<p>L-glutamate is the major excitatory neurotransmitter in the central nervous system and activates both ionotropic and metabotropic glutamate receptors. Glutamatergic neurotransmission is involved in most aspects of normal brain function and can be perturbed in many neuropathologic conditions. The metabotropic glutamate receptors are a family of G protein-coupled receptors, that have been divided into 3 groups on the basis of sequence homology, putative signal transduction mechanisms, and pharmacologic properties. Group I includes GRM1 and GRM5 and these receptors have been shown to activate phospholipase C. Group II includes GRM2 and GRM3 while Group III includes GRM4, GRM6, GRM7 and GRM8. Group II and III receptors are linked to the inhibition of the cyclic AMP cascade but differ in their agonist selectivities.</p> <p>Alias Symbols: GLUR3, mGlu3, GPRC1C, MGLUR3</p> <p>Protein Size: 751</p>
Molecular Weight:	82 kDa
Gene ID:	2913
NCBI Accession:	<a href="#">NM_000840</a> , <a href="#">NP_000831</a>
UniProt:	<a href="#">Q14832</a>
Pathways:	<a href="#">cAMP Metabolic Process</a> , <a href="#">Synaptic Membrane</a>

## Application Details

Restrictions:	For Research Use only
---------------	-----------------------

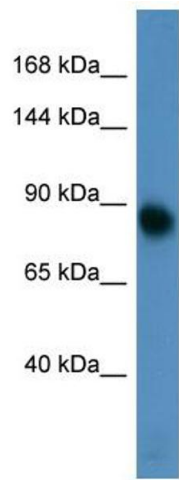
## Handling

Format:	Liquid
Concentration:	1 mg/mL
Buffer:	Liquid. Purified antibody supplied in 1x PBS buffer with 0.09 % (w/v) sodium azide and 2 % sucrose.
Preservative:	Sodium azide
Precaution of Use:	This product contains Sodium azide: a POISONOUS AND HAZARDOUS SUBSTANCE which should be handled by trained staff only.
Handling Advice:	Avoid repeat freeze-thaw cycles.
Storage:	-20 °C

Handling

Storage Comment: For short term use, store at 2-8°C up to 1 week. For long term storage, store at -20°C in small aliquots to prevent freeze-thaw cycles.

Images



**Western Blotting**

**Image 1.**