

Datasheet for ABIN2788133

anti-Metabotropic Glutamate Receptor 3 antibody (C-Term)[Go to Product page](#)**1** Image

Overview

Quantity:	100 µL
Target:	Metabotropic Glutamate Receptor 3 (GRM3)
Binding Specificity:	C-Term
Reactivity:	Human, Mouse, Rat, Cow, Horse, Rabbit, Dog
Host:	Rabbit
Clonality:	Polyclonal
Conjugate:	This Metabotropic Glutamate Receptor 3 antibody is un-conjugated
Application:	Western Blotting (WB)

Product Details

Immunogen:	The immunogen is a synthetic peptide directed towards the C-terminal region of human GRM3
Sequence:	RDFWEQKFQC SLQNKRNHRR VCDKHLAIDS SNYEQESKIM FVNAVYAMA
Predicted Reactivity:	Cow: 92%, Dog: 100%, Horse: 100%, Human: 100%, Mouse: 100%, Rabbit: 85%, Rat: 93%
Characteristics:	This is a rabbit polyclonal antibody against GRM3. It was validated on Western Blot.
Purification:	Affinity Purified

Target Details

Target:	Metabotropic Glutamate Receptor 3 (GRM3)
Alternative Name:	GRM3 (GRM3 Products)
Background:	L-glutamate is the major excitatory neurotransmitter in the central nervous system and

Target Details

activates both ionotropic and metabotropic glutamate receptors. Glutamatergic neurotransmission is involved in most aspects of normal brain function and can be perturbed in many neuropathologic conditions. The metabotropic glutamate receptors are a family of G protein-coupled receptors, that have been divided into 3 groups on the basis of sequence homology, putative signal transduction mechanisms, and pharmacologic properties. Group I includes GRM1 and GRM5 and these receptors have been shown to activate phospholipase C. Group II includes GRM2 and GRM3 while Group III includes GRM4, GRM6, GRM7 and GRM8. Group II and III receptors are linked to the inhibition of the cyclic AMP cascade but differ in their agonist selectivities.

Alias Symbols: GLUR3, mGlu3, GPRC1C, MGLUR3

Protein Size: 537

Molecular Weight: 59 kDa

Gene ID: 2913

NCBI Accession: [NM_000840](#), [NP_000831](#)

UniProt: [Q14832](#)

Pathways: [cAMP Metabolic Process](#), [Synaptic Membrane](#)

Application Details

Restrictions: For Research Use only

Handling

Format: Liquid

Concentration: 1 mg/mL

Buffer: Liquid. Purified antibody supplied in 1x PBS buffer with 0.09 % (w/v) sodium azide and 2 % sucrose.

Preservative: Sodium azide

Precaution of Use: This product contains Sodium azide: a POISONOUS AND HAZARDOUS SUBSTANCE which should be handled by trained staff only.

Handling Advice: Avoid repeat freeze-thaw cycles.

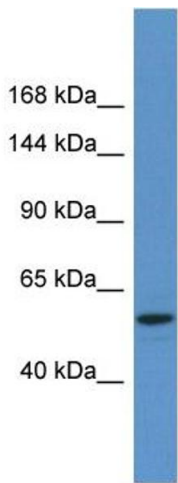
Storage: -20 °C

Storage Comment: For short term use, store at 2-8°C up to 1 week. For long term storage, store at -20°C in small

Handling

aliquots to prevent freeze-thaw cycles.

Images



Western Blotting

Image 1.