

Datasheet for ABIN2788138
anti-GCH1 antibody (C-Term)



[Go to Product page](#)

1 Image

Overview

Quantity:	100 µL
Target:	GCH1
Binding Specificity:	C-Term
Reactivity:	Human, Mouse, Rat, Cow, Dog, Rabbit, Horse, Guinea Pig, Saccharomyces cerevisiae, Zebrafish (Danio rerio)
Host:	Rabbit
Clonality:	Polyclonal
Conjugate:	This GCH1 antibody is un-conjugated
Application:	Western Blotting (WB)

Product Details

Immunogen:	The immunogen is a synthetic peptide directed towards the C terminal region of human GCH1
Sequence:	LRPAGVGWVW EATHMCMVMR GVQKMNSKTV TSTMLGVFRE DPKTREEFLT
Predicted Reactivity:	Cow: 100%, Dog: 100%, Guinea Pig: 100%, Horse: 100%, Human: 100%, Mouse: 100%, Rabbit: 100%, Rat: 100%, Yeast: 85%, Zebrafish: 93%
Characteristics:	This is a rabbit polyclonal antibody against GCH1. It was validated on Western Blot.
Purification:	Affinity Purified

Target Details

Target:	GCH1
---------	------

Target Details

Alternative Name:	GCH1 (GCH1 Products)
Background:	<p>This gene encodes a member of the GTP cyclohydrolase family. The encoded protein is the first and rate-limiting enzyme in tetrahydrobiopterin (BH4) biosynthesis, catalyzing the conversion of GTP into 7,8-dihydroneopterin triphosphate. BH4 is an essential cofactor required by aromatic amino acid hydroxylases as well as nitric oxide synthases. Mutations in this gene are associated with malignant hyperphenylalaninemia and dopa-responsive dystonia. Several alternatively spliced transcript variants encoding different isoforms have been described, however, not all variants give rise to a functional enzyme.</p> <p>Alias Symbols: DYT14, DYT5, DYT5a, GCH, GTP-CH-1, GTPCH1, HPABH4B</p> <p>Protein Interaction Partner: GCH1, CALML6, CAMKK1, CSNK1G1, CALML5, PACSIN3, RGS19, MAP2K4, MAPK12, MAP2K5, MAPK10, PRKAR2B, PRKAR2A, PPM1B, CSNK2B, CSNK2A1, GIT2, YWHAZ, CNRIP1, RAB26, AHSA1, SP3, RLF, HSPA8, GCHFR, ATP1B1, CDC37, SH3GL2, OSBPL9, RPH3A,</p> <p>Protein Size: 250</p>
Molecular Weight:	28 kDa
Gene ID:	2643
NCBI Accession:	NM_000161 , NP_000152
UniProt:	P30793

Application Details

Application Notes:	Optimal working dilutions should be determined experimentally by the investigator.
Comment:	Antigen size: 250 AA
Restrictions:	For Research Use only

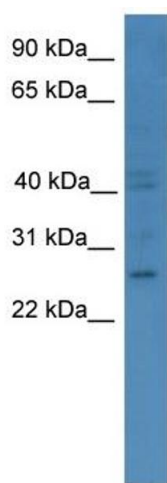
Handling

Format:	Liquid
Concentration:	Lot specific
Buffer:	Liquid. Purified antibody supplied in 1x PBS buffer with 0.09 % (w/v) sodium azide and 2 % sucrose.
Preservative:	Sodium azide
Precaution of Use:	This product contains Sodium azide: a POISONOUS AND HAZARDOUS SUBSTANCE which

Handling

	should be handled by trained staff only.
Handling Advice:	Avoid repeated freeze-thaw cycles.
Storage:	-20 °C
Storage Comment:	For short term use, store at 2-8°C up to 1 week. For long term storage, store at -20°C in small aliquots to prevent freeze-thaw cycles.

Images



Western Blotting

Image 1. WB Suggested Anti-GCH1 Antibody Titration: 0.2-1 ug/ml ELISA Titer: 1:1562500 Positive Control: COLO205 cell lysate