

Datasheet for ABIN2788139
anti-GCH1 antibody (N-Term)



[Go to Product page](#)

1 Image

Overview

Quantity:	100 µL
Target:	GCH1
Binding Specificity:	N-Term
Reactivity:	Human, Rat, Cow, Dog, Rabbit
Host:	Rabbit
Clonality:	Polyclonal
Conjugate:	This GCH1 antibody is un-conjugated
Application:	Western Blotting (WB)

Product Details

Immunogen:	The immunogen is a synthetic peptide directed towards the N-terminal region of Human GCH1
Sequence:	PPRPEAKSAQ PADGWKGERP RSEEDNELNL PNLAAAYSSI LSSLGENPQR
Predicted Reactivity:	Cow: 100%, Dog: 100%, Human: 100%, Rabbit: 100%, Rat: 86%
Characteristics:	This is a rabbit polyclonal antibody against GCH1. It was validated on Western Blot.
Purification:	Affinity Purified

Target Details

Target:	GCH1
Alternative Name:	GCH1 (GCH1 Products)
Background:	This gene encodes a member of the GTP cyclohydrolase family. The encoded protein is the first

Target Details

and rate-limiting enzyme in tetrahydrobiopterin (BH4) biosynthesis, catalyzing the conversion of GTP into 7,8-dihydroneopterin triphosphate. BH4 is an essential cofactor required by aromatic amino acid hydroxylases as well as nitric oxide synthases. Mutations in this gene are associated with malignant hyperphenylalaninemia and dopa-responsive dystonia. Several alternatively spliced transcript variants encoding different isoforms have been described, however, not all variants give rise to a functional enzyme.

Protein Interaction Partner: GCH1, CALML6, CAMKK1, CSNK1G1, CALML5, PACSIN3, RGS19, MAP2K4, MAPK12, MAP2K5, MAPK10, PRKAR2B, PRKAR2A, PPM1B, CSNK2B, CSNK2A1, GIT2, YWHAZ, CNRIP1, RAB26, AHSA1, SP3, RLF, HSPA8, GCHFR, ATP1B1, CDC37, SH3GL2, OSBPL9, RPH3A,

Protein Size: 250

Molecular Weight: 27 kDa

Gene ID: 2643

UniProt: [P30793](#)

Application Details

Restrictions: For Research Use only

Handling

Format: Liquid

Concentration: 1 mg/mL

Buffer: Liquid. Purified antibody supplied in 1x PBS buffer with 0.09 % (w/v) sodium azide and 2 % sucrose.

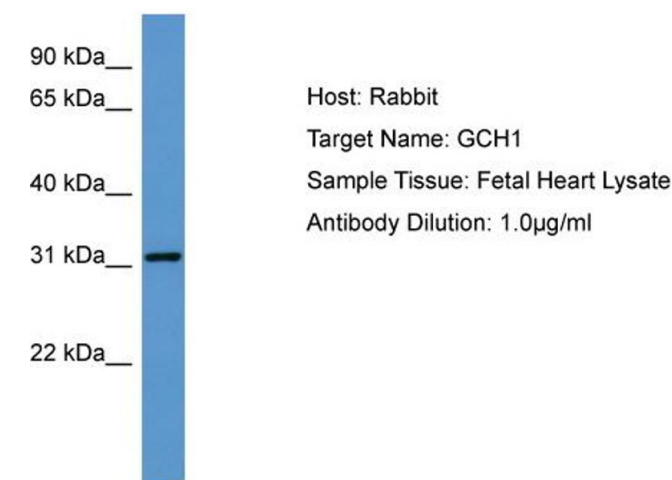
Preservative: Sodium azide

Precaution of Use: This product contains Sodium azide: a POISONOUS AND HAZARDOUS SUBSTANCE which should be handled by trained staff only.

Handling Advice: Avoid repeat freeze-thaw cycles.

Storage: -20 °C

Storage Comment: For short term use, store at 2-8°C up to 1 week. For long term storage, store at -20°C in small aliquots to prevent freeze-thaw cycles.



Western Blotting

Image 1. Host: Rabbit Target Name: GCH1 Sample Tissue:
Human Fetal Heart Antibody Dilution: 1ug/ml