

Datasheet for ABIN2788141  
**anti-CBLN1 antibody (C-Term)**[Go to Product page](#)

## 1 Image

## Overview

Quantity:	100 µL
Target:	CBLN1
Binding Specificity:	C-Term
Reactivity:	Human, Rat, Mouse, Cow, Zebrafish (Danio rerio), Dog, Guinea Pig, Horse, Rabbit
Host:	Rabbit
Clonality:	Polyclonal
Conjugate:	This CBLN1 antibody is un-conjugated
Application:	Western Blotting (WB)

## Product Details

Immunogen:	The immunogen is a synthetic peptide directed towards the C terminal region of human CBLN1
Sequence:	LMLNGWPVIS AFAGDQDVTR EAASNGVLIQ MEKGDRAWYK LERGNLMGGW
Predicted Reactivity:	Cow: 100%, Dog: 100%, Guinea Pig: 100%, Horse: 100%, Human: 100%, Mouse: 100%, Rabbit: 100%, Rat: 100%, Zebrafish: 100%
Characteristics:	This is a rabbit polyclonal antibody against CBLN1. It was validated on Western Blot.
Purification:	Affinity Purified

## Target Details

Target:	CBLN1
Alternative Name:	CBLN1 ( <a href="#">CBLN1 Products</a> )

## Target Details

Background:	<p>This gene encodes a cerebellum-specific precursor protein, precerebellin, with similarity to the globular (non-collagen-like) domain of complement component C1qB. Precerebellin is processed to give rise to several derivatives, including the hexadecapeptide, cerebellin, which is highly enriched in postsynaptic structures of Purkinje cells. Cerebellin has also been found in human and rat adrenals, where it has been shown to enhance the secretory activity of this gland.</p> <p>Alias Symbols: -</p> <p>Protein Interaction Partner: CBLN3,</p> <p>Protein Size: 193</p>
Molecular Weight:	21 kDa
Gene ID:	869
NCBI Accession:	<a href="#">NM_004352</a> , <a href="#">NP_004343</a>
UniProt:	<a href="#">P23435</a>

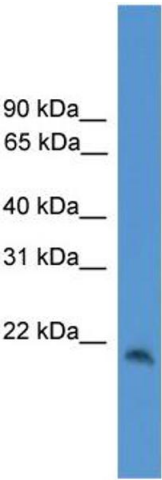
## Application Details

Application Notes:	Optimal working dilutions should be determined experimentally by the investigator.
Comment:	Antigen size: 193 AA
Restrictions:	For Research Use only

## Handling

Format:	Liquid
Concentration:	Lot specific
Buffer:	Liquid. Purified antibody supplied in 1x PBS buffer with 0.09 % (w/v) sodium azide and 2 % sucrose.
Preservative:	Sodium azide
Precaution of Use:	This product contains Sodium azide: a POISONOUS AND HAZARDOUS SUBSTANCE which should be handled by trained staff only.
Handling Advice:	Avoid repeated freeze-thaw cycles.
Storage:	-20 °C
Storage Comment:	For short term use, store at 2-8°C up to 1 week. For long term storage, store at -20°C in small

aliquots to prevent freeze-thaw cycles.



**Western Blotting**

**Image 1.** WB Suggested Anti-CBLN1 Antibody Titration: 0.2-1 ug/ml ELISA Titer: 1:312500 Positive Control: Jurkat cell lysate