

Datasheet for ABIN2788144  
**anti-SPR antibody (C-Term)**



[Go to Product page](#)

2 Images

## Overview

Quantity:	100 µL
Target:	SPR
Binding Specificity:	C-Term
Reactivity:	Human, Mouse, Rat, Dog, Horse, Rabbit
Host:	Rabbit
Clonality:	Polyclonal
Conjugate:	This SPR antibody is un-conjugated
Application:	Western Blotting (WB)

## Product Details

Immunogen:	The immunogen is a synthetic peptide directed towards the C terminal region of human SPR
Sequence:	ETSVDPDMRK GLQELKAKGK LVDCKVSAQK LLSLLEKDEF KSGAHVDFYD
Predicted Reactivity:	Dog: 79%, Horse: 86%, Human: 100%, Mouse: 79%, Rabbit: 86%, Rat: 79%
Characteristics:	This is a rabbit polyclonal antibody against SPR. It was validated on Western Blot.
Purification:	Affinity Purified

## Target Details

Target:	SPR
Alternative Name:	SPR ( <a href="#">SPR Products</a> )
Background:	This gene encodes an aldo-keto reductase that catalyzes the NADPH-dependent reduction of

## Target Details

---

pteridine derivatives and is important in the biosynthesis of tetrahydrobiopterin (BH4). Mutations in this gene result in DOPA-responsive dystonia due to sepiaterin reductase deficiency. A pseudogene has been identified on chromosome 1.

Alias Symbols: SDR38C1

Protein Interaction Partner: UBC, YWHAQ, MRPL53, SRPRB, SUGP1, SBDS, AHCYL1, SCO2, RAD23B, PPM1G, NDUFA2, IDH3G, CRK, ASS1, CAMK2G,

Protein Size: 261

---

Molecular Weight: 28 kDa

---

Gene ID: 6697

---

NCBI Accession: [NM\\_003124](#), [NP\\_003115](#)

---

UniProt: [P35270](#)

---

Pathways: [Regulation of Systemic Arterial Blood Pressure by Hormones](#), [Feeding Behaviour](#), [Smooth Muscle Cell Migration](#)

## Application Details

---

---

Application Notes: Optimal working dilutions should be determined experimentally by the investigator.

---

Comment: Antigen size: 261 AA

---

Restrictions: For Research Use only

## Handling

---

---

Format: Liquid

---

Concentration: Lot specific

---

Buffer: Liquid. Purified antibody supplied in 1x PBS buffer with 0.09 % (w/v) sodium azide and 2 % sucrose.

---

Preservative: Sodium azide

---

Precaution of Use: This product contains Sodium azide: a POISONOUS AND HAZARDOUS SUBSTANCE which should be handled by trained staff only.

---

Handling Advice: Avoid repeated freeze-thaw cycles.

---

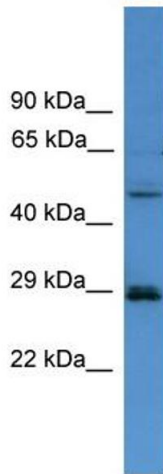
Storage: -20 °C

---

Storage Comment: For short term use, store at 2-8°C up to 1 week. For long term storage, store at -20°C in small

aliquots to prevent freeze-thaw cycles.

Images

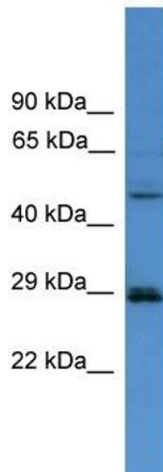


**Western Blotting**

**Image 1. WB Suggested Anti-SPR Antibody Titration:** 0.2-1 ug/ml

**ELISA Titer:** 1:1562500

**Positive Control:** HeLa cell lysate



**Western Blotting**

**Image 2. WB Suggested Anti-SPR**

Antibody Titration: 0.2-1 µg/mL ELISA Titer: 1:1562500

Positive Control: HeLa cell lysate

SPR is supported by BioGPS gene expression data to be expressed in HeLa