

Datasheet for ABIN2788145

anti-Calcitonin Receptor antibody (C-Term)[Go to Product page](#)**1** Image

Overview

Quantity:	100 µL
Target:	Calcitonin Receptor (CALCR)
Binding Specificity:	C-Term
Reactivity:	Human, Cow, Dog, Guinea Pig
Host:	Rabbit
Clonality:	Polyclonal
Conjugate:	This Calcitonin Receptor antibody is un-conjugated
Application:	Western Blotting (WB)

Product Details

Immunogen:	The immunogen is a synthetic peptide directed towards the C terminal region of human CALCR
Sequence:	NQRWGRRPSN RSARAAAAAA EAGDIPIYIC HQELRNEPAN NQGEESAEII
Predicted Reactivity:	Cow: 77%, Dog: 79%, Guinea Pig: 79%, Human: 100%
Characteristics:	This is a rabbit polyclonal antibody against CALCR. It was validated on Western Blot.
Purification:	Affinity Purified

Target Details

Target:	Calcitonin Receptor (CALCR)
Alternative Name:	CALCR (CALCR Products)
Background:	This gene encodes a high affinity receptor for the peptide hormone calcitonin and belongs to a

Target Details

subfamily of seven transmembrane-spanning G protein-coupled receptors. The encoded protein is involved in maintaining calcium homeostasis and in regulating osteoclast-mediated bone resorption. Polymorphisms in this gene have been associated with variations in bone mineral density and onset of osteoporosis. Alternate splicing results in multiple transcript variants.

Alias Symbols: CRT, CTR, CTR1, CT-R

Protein Interaction Partner: GPRASP2, GPRASP1, RAMP3, RAMP1, FLNA, MBL2, CALM1, TOPBP1, TSHR, APOB, THBS1, LRP1, CALCA,

Protein Size: 474

Molecular Weight: 52 kDa

Gene ID: 799

NCBI Accession: [NM_001742](#), [NP_001733](#)

UniProt: [P30988](#)

Pathways: [cAMP Metabolic Process](#)

Application Details

Application Notes: Optimal working dilutions should be determined experimentally by the investigator.

Comment: Antigen size: 474 AA

Restrictions: For Research Use only

Handling

Format: Liquid

Concentration: Lot specific

Buffer: Liquid. Purified antibody supplied in 1x PBS buffer with 0.09 % (w/v) sodium azide and 2 % sucrose.

Preservative: Sodium azide

Precaution of Use: This product contains Sodium azide: a POISONOUS AND HAZARDOUS SUBSTANCE which should be handled by trained staff only.

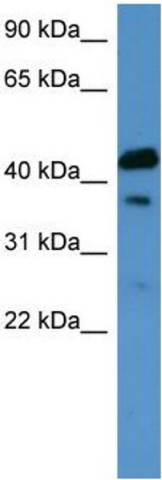
Handling Advice: Avoid repeated freeze-thaw cycles.

Storage: -20 °C

Handling

Storage Comment: For short term use, store at 2-8°C up to 1 week. For long term storage, store at -20°C in small aliquots to prevent freeze-thaw cycles.

Images



Western Blotting

Image 1. WB Suggested Anti-CALCR Antibody Titration: 0.2-1 ug/ml ELISA Titer: 1:1562500 Positive Control: Human kidney